

## Product datasheet for **RC228326**

### GM CSF Receptor alpha (CSF2RA) (NM\_001161531) Human Tagged ORF Clone

#### Product data:

Product Type:	Expression Plasmids
Product Name:	GM CSF Receptor alpha (CSF2RA) (NM_001161531) Human Tagged ORF Clone
Tag:	Myc-DDK
Symbol:	GM CSF Receptor alpha
Synonyms:	alphaGMR; CD116; CDw116; CSF2R; CSF2RAX; CSF2RAY; CSF2RX; CSF2RY; GM-CSF-R-alpha; GMCSFR; GMCSFR-alpha; GMR; GMR-alpha; SMDP4
Mammalian Cell Selection:	Neomycin
Vector:	pCMV6-Entry (PS100001)
E. coli Selection:	Kanamycin (25 ug/mL)



[View online »](#)

**ORF Nucleotide Sequence:**

>RC228326 representing NM\_001161531  
 Red=Cloning site Blue=ORF Green=Tags(s)

TTTTGTAATACGACTCACTATAGGGCGGCCGGAATTCGTCGACTGGATCCGGTACCGAGGAGATCTGCC  
 GCCCGCATCGCC

ATGCTTCTCCTGGTGACAAGCCTTCTGCTCTGTGAGTTACCACACCCAGCATTCTCCTGATCCCAGAGA  
 AATCGGATCTGCGAACAGTGGCACCAGCCTCTAGTCTCAATGTGAGGTTTGACTCCAGGACGATGAATTT  
 AAGCTGGGACTGCCAAGAAAACACAACCTTCAGCAAGTGTTCCTTAAGTACAAGAAAGACAGAGTCGTG  
 GAACCCAGGCTCAGTAACAACGAATGTTCTGTCACATTTCTGAAATTTGTCTGCATGAAGGAGTCACAT  
 TTGAGGTTACGTGAATACTAGTCAAAGAGGATTTCAACAGAACTGCTTTATCCAAATTCAGGAAGGGA  
 GGGTACCCTGCTCAGAATTTCTCTGTTTCATCTACAATGCGGATTTAATGAACGTACCTGGGCGAGG  
 GGTCCGACGGCCCCCGTACGTCCAGTATTTTTGTACATACGAACTCAAAGAGAAGGAGGGAGATCC  
 GGTGTCCTTATTACATAAAGACTCAGGAACCCATGTGGGATGTCACCTGGATAACCTGTCAGGATTAAC  
 GTCTCGCAATTACTTTCTGGTTAACGGAACCCAGCCGAGAAATGGCATCCAATTTTGTGATTCATTTTG  
 GACACAAAAGAAAATAGAAGATTCAACCTCCAGCAATGTCACCGTACGTTGCAACACGACGCACTGCC  
 TCGTACGGTGAAACAGCCAGGACCTATCAGAAGCTGTCGTACCTGGACTTTCAGTACCAGCTGGACGT  
 CCACAGAAAGAATACCCAGCCTGGCAGGAAAACCTACTGATTAATGTTTCTGGTGATTTGGAAAATAGA  
 TACAATTTTCAAGCTCTGAGCCAGAGCAAAACAGTGTGAAGATCAGAGCTGCAGACGTCCGCATCT  
 TGAATTGGAGCTCCTGGAGTGAAGCCATTGAATTTGGTTCTGACGACGGGAACCTCGGCTCTGTGTACAT  
 TTATGTCTCCTAATCGTGGGAACCTTGTCTGTGGCATCGTCTCGGCTTCTCTTTAAAGGTTCTCT  
 AGGATACAGCGGCTGTTCCCGCCAGTCCACAGATCAAAGACAACTGAATGATAACCATGAGGTGGAAG  
 ACGAGATGGGACCGCAGCGTCACCACCGGTGTGGCTGGAATCTGTATCCCACTCCTGGCCCTTCTCCCGG  
 GTCGGGGTCTTCTCCAAGTTGGGGTCAGAGTCATCTCTG

ACGCGTACGCGGCCGCTCGAGCAGAACTCATCTCAGAAGAGGATCTGGCAGCAATGATATCCTGGATT  
 ACAAGGATGACGACGATAAGGTTTAA

**Protein Sequence:**

>RC228326 representing NM\_001161531  
 Red=Cloning site Green=Tags(s)

MLLLVTSLLLCELPHPAFLLIPEKSDLRTVAPASSLNVRFDSTMNLSWDCQENTTFSKCFLTDKKNRVV  
 EPRLSNNECSCTFREICLHEGVTFEVHVNTSQRGFQQLLYPNSGREGTAAQNFSCFIYNADLMNCTWAR  
 GPTAPRDVQYFLYIRNSKRRREIRCPYYIQDSGTHVGGCHLDNL SGLTSRNYFLVNGTSREIGIQFFDSSL  
 DTKKIERFNPPSNVTVRCNTTHCLVVRWKQPRTYQKLSYLDYQYQLDVHRKNTQPGTENLLINVSQDLENR  
 YNFPSSPRAKHSVKIRAADVRIILNWSWSEAIIEFGSDDGNLGSVYIYVLLIVGTLVCGIVLGLFKRFL  
 RIQRLFPVPQIKDKLNDNHEVEDEMGPQRHRCGWNL YPTPGSPGSGSSPRLGSESSL

TRTRPLEQKLISEEDLAANDILDYKDDDDKV

**Chromatograms:**

[https://cdn.origene.com/chromatograms/mk8058\\_a04.zip](https://cdn.origene.com/chromatograms/mk8058_a04.zip)

**Restriction Sites:**

Sgfl-Mlul

**Cloning Scheme:**


**ACCN:** NM\_001161531

**ORF Size:** 1230 bp

**OTI Disclaimer:** The molecular sequence of this clone aligns with the gene accession number as a point of reference only. However, individual transcript sequences of the same gene can differ through naturally occurring variations (e.g. polymorphisms), each with its own valid existence. This clone is substantially in agreement with the reference, but a complete review of all prevailing variants is recommended prior to use. [More info](#)

**OTI Annotation:** This clone was engineered to express the complete ORF with an expression tag. Expression varies depending on the nature of the gene.

**Components:** The ORF clone is ion-exchange column purified and shipped in a 2D barcoded Matrix tube containing 10ug of transfection-ready, dried plasmid DNA (reconstitute with 100 ul of water).

**Reconstitution Method:**

1. Centrifuge at 5,000xg for 5min.
2. Carefully open the tube and add 100ul of sterile water to dissolve the DNA.
3. Close the tube and incubate for 10 minutes at room temperature.
4. Briefly vortex the tube and then do a quick spin (less than 5000xg) to concentrate the liquid at the bottom.
5. Store the suspended plasmid at -20°C. The DNA is stable for at least one year from date of shipping when stored at -20°C.

**RefSeq:** [NM\\_001161531.2](#)

**RefSeq ORF:** 1233 bp

**Locus ID:** 1438

**UniProt ID:** [P15509](#)

**Cytogenetics:** X;Y

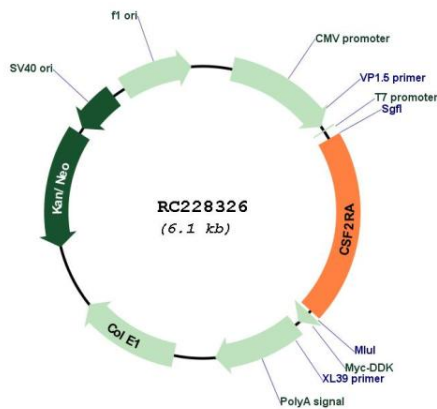
**Protein Families:** Druggable Genome, Secreted Protein, Transmembrane

**Protein Pathways:** Cytokine-cytokine receptor interaction, Hematopoietic cell lineage, Jak-STAT signaling pathway, Pathways in cancer

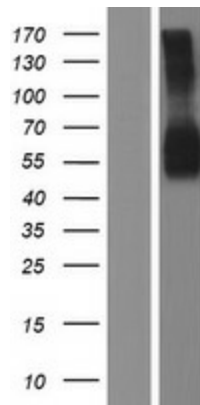
**MW:** 46.9 kDa

**Gene Summary:** The protein encoded by this gene is the alpha subunit of the heterodimeric receptor for colony stimulating factor 2, a cytokine which controls the production, differentiation, and function of granulocytes and macrophages. The encoded protein is a member of the cytokine family of receptors. This gene is found in the pseudoautosomal region (PAR) of the X and Y chromosomes. Multiple transcript variants encoding different isoforms have been found for this gene, with some of the isoforms being membrane-bound and others being soluble. [provided by RefSeq, Jul 2008]

**Product images:**



Circular map for RC228326



Western blot validation of overexpression lysate (Cat# [LY431354]) using anti-DDK antibody (Cat# [TA50011-100]). Left: Cell lysates from untransfected HEK293T cells; Right: Cell lysates from HEK293T cells transfected with RC228326 using transfection reagent MegaTran 2.0 (Cat# [TT210002]).