

## Product datasheet for RC228325

### Gasdermin like (GSDMB) (NM\_001165959) Human Tagged ORF Clone

#### Product data:

Product Type:	Expression Plasmids
Product Name:	Gasdermin like (GSDMB) (NM_001165959) Human Tagged ORF Clone
Tag:	Myc-DDK
Symbol:	Gasdermin like
Synonyms:	GSDMB-1; GSDML; PP4052; PRO2521
Mammalian Cell Selection:	Neomycin
Vector:	pCMV6-Entry (PS100001)
E. coli Selection:	Kanamycin (25 ug/mL)
ORF Nucleotide Sequence:	>RC228325 representing NM_001165959 Red=Cloning site Blue=ORF Green=Tags(s)

TTTTGTAATACGACTCACTATAGGGCGCCGGGAATTCGTCGACTGGATCCGGTACCGAGGAGATCTGCC  
GCC**CGATCGCC**

ATGTTTCAGCGTATTTGAGGAAATCACAGAATTGTAGTTAAGGAGATGGATGCTGGAGGGGATGATTG  
CCGTTAGAAGCCTTGTGATGCTGATAGATTCCGCTGCTCCATCTGGTGGGGGAGAAGAGAAGCTTTCTT  
TGGATGCCGCACTACACAACAGGCCTCACCTGATGGACATTCTGGACACAGATGGGACAAGTGGTTA  
GATGAAGTGGATTCTGGGCTCAAAGGTCAAAGGCTGAGTTTCAAATTCTGGATAATGTAGACTCAACGG  
GAGAGTTGATAGTGAGATTACCCAAAGAAATAACAATTCAGGCAGTTTCCAGGGCTTCCACCATCAGAA  
AATCAAGATATCGGAGAACCGGATATCCAGCAGTATCTGGCTACCCCTGAAAACAGGAAGCTGAAGAGG  
GAACTACCCTTTTTCATTCCGATCAATTAATACGAGAGAAAACCTGTATCTGGTGACAGAAAACCTGGAGA  
CGGTAAAGGAGGAAACCTGAAAAGCGACCGGCAATATAAATTTGGAGCCAGATCTCTCAGGGCCATCT  
CAGCTATAAACACAAGGGCCAAAGGGAAGTGACCATCCCCCAAATCGGGTCTGAGCTATCGAGTAAAG  
CAGCTTGTCTTCCCAACAAGGAGACGATGAATATTCATTTCCAGGGGCAAAAACAAATCCTTTCCAGAAG  
GAAAGTCTTTGGGTTCCGAGGATTCCAGAAACATGAAGGAGAAGTTGGAGGACATGGAGAGTGTCTCAA  
GGACCTGACAGAGGAGAAGAGAAAAGATGTGCTAACTCCCTCGCTAAGTGCCTCGCAAGGAGGATATT  
CGGCAGGATCTAGAGCAAAGAGTATCTGAGGTCCTGATTTCCGGGAGCTACACATGGAGGACCCAGACA  
AGCCTCTCCTAAGCAGCCTTTTAAATGCTGCTGGGGTCTTGGTAGAAGCGCGTGCAAAAAGCCATTCTGGA  
CTTCTGATGACCTGCTAGAGCTGTCTGAAGAGCAGCAGTTTGTGGCTGAGGCCCTGGAGAAGGGGACC  
CTTCTCTGTTGAAGACCAGGTGAAATCTGTGATGGAGCAGAACTGGGATGAGCTGGCCAGCAGTCTCT  
CTGACATGGACTATGACCCTGAGGCACGAATCTCTGTGCGCTGTATGTTGTTGTCTCTATCCTGCTGGA  
GCTGGCTGAGGGGCTACCTCTGTCTCTTCC

**ACGCGT**ACGCGGCCGCTCGAGCAGAAACTCATCTCAGAAGAGGATCTGGCAGCAAATGATATCCTGGATT  
ACAAGGATGACGACGATAAGGTTTAA



[View online »](#)

**Protein Sequence:** >RC228325 representing NM\_001165959  
Red=Cloning site Green=Tags(s)

MFSVFEEITRIVVKEMDAGGDMIAVRSLVDADRFRCFHLVGEKRTFFGCRHYTTGLTMDILDTDGDKWL  
 DELDSSLGQKAEFQILDNDVSTGELIVRLPKEITISGSFQGFHHQKIKISENRISQQYLATLENRKLKR  
 ELPF SFRSINTRENLYLVTETLETVKEETLKSDRQYKFSQISQGHLSYKHKGQREVTIPPNRVLSYRVK  
 QLVFVNKETMNIHFRGKTKSFPPEKSLGSEDSRNMKEKLEDMESVLKDLTEEKRKDVLNSLAKLGKEDI  
 RQDLEQRVSEVLISGELHMEPPDKPLLSL FNAAGVLVEARAKAILEDLALLEEQQFVAEALEKGT  
 LPLLLKQVKSVMQNWDELASSPPMDYDPEARILCALYVVVSILLELAEGPTSVSS

TRTRPLEQKLISEEDLAANDILDYKDDDDKV

**Chromatograms:** [https://cdn.origene.com/chromatograms/mk8057\\_h01.zip](https://cdn.origene.com/chromatograms/mk8057_h01.zip)

**Restriction Sites:** SgfI-MluI

**Cloning Scheme:**



\* The last codon before the Stop codon of the ORF

**ACCN:** NM\_001165959

**ORF Size:** 1221 bp

**OTI Disclaimer:** The molecular sequence of this clone aligns with the gene accession number as a point of reference only. However, individual transcript sequences of the same gene can differ through naturally occurring variations (e.g. polymorphisms), each with its own valid existence. This clone is substantially in agreement with the reference, but a complete review of all prevailing variants is recommended prior to use. [More info](#)

**OTI Annotation:** This clone was engineered to express the complete ORF with an expression tag. Expression varies depending on the nature of the gene.

**Components:** The ORF clone is ion-exchange column purified and shipped in a 2D barcoded Matrix tube containing 10ug of transfection-ready, dried plasmid DNA (reconstitute with 100 ul of water).

**Reconstitution Method:**

1. Centrifuge at 5,000xg for 5min.
2. Carefully open the tube and add 100ul of sterile water to dissolve the DNA.
3. Close the tube and incubate for 10 minutes at room temperature.
4. Briefly vortex the tube and then do a quick spin (less than 5000xg) to concentrate the liquid at the bottom.
5. Store the suspended plasmid at -20°C. The DNA is stable for at least one year from date of shipping when stored at -20°C.

**RefSeq:** [NM\\_001165959.1](#), [NP\\_001159431.1](#)

**RefSeq ORF:** 1224 bp

**Locus ID:** 55876

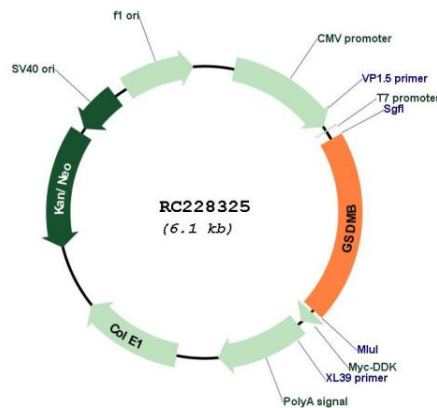
**UniProt ID:** [Q8TAX9](#)

**Cytogenetics:** 17q21.1

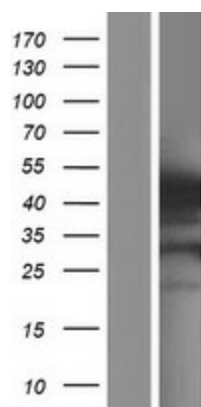
**MW:** 46.3 kDa

**Gene Summary:** This gene encodes a member of the gasdermin-domain containing protein family. Other gasdermin-family genes are implicated in the regulation of apoptosis in epithelial cells, and are linked to cancer. Alternative splicing and the use of alternative promoters results in multiple transcript variants. Additional variants have been described, but they are candidates for nonsense-mediated mRNA decay (NMD) and are unlikely to be protein-coding. [provided by RefSeq, Nov 2016]

## Product images:



Circular map for RC228325



Western blot validation of overexpression lysate (Cat# [LY431353]) using anti-DDK antibody (Cat# [TA50011-100]). Left: Cell lysates from untransfected HEK293T cells; Right: Cell lysates from HEK293T cells transfected with RC228325 using transfection reagent MegaTran 2.0 (Cat# [TT210002]).