

## Product datasheet for RC228323

### PIP4K2C (NM\_001146259) Human Tagged ORF Clone

#### Product data:

Product Type:	Expression Plasmids
Product Name:	PIP4K2C (NM_001146259) Human Tagged ORF Clone
Tag:	Myc-DDK
Symbol:	PIP4K2C
Synonyms:	PIP5K2C
Mammalian Cell Selection:	Neomycin
Vector:	pCMV6-Entry (PS100001)
E. coli Selection:	Kanamycin (25 ug/mL)
ORF Nucleotide Sequence:	>RC228323 representing NM_001146259 Red=Cloning site Blue=ORF Green=Tags(s)

TTTTGTAATACGACTCACTATAGGGCGGCCGGAATTCGTCGACTGGATCCGGTACCGAGGAGATCTGCC  
GCC**CGATCGCC**

ATGGCGTCCTCCTCGGTCCCACCAGCCACGGTATCGGGCGGACAGCAGGCCCGGCCAGGTTTCGGCT  
TCGCCTCAAGACCAAGAAGAAGCATTTCTGTCAGCAGAAGGTGAAGGTGTTCCGGGCGGCCGACCCGCT  
GGTGGGTGTGTTCTGTGGGGCTAGCCACTCGATCAATGAGCTCAGCCAGGTGCCTCCCCGGTGATG  
CTGCTGCCAGATGACTTTAAGGCCAGCTCAAGATCAAGGAGTATTGTCGCCAGGTCTTCAGGAACCTCC  
GTGATCGATTTGGCATTGATGACCAAGATTACTTGGTGTCCCTTACCCGAAACCCCCAGCGAAAGTGA  
AGGCAGTGATGGTCGCTTCTTATCTCCTACGATCGGACTCTGGTCATCAAAGAAGTATCCAGTGAGGAC  
ATTGCTGACATGCATAGCAACCTCTCCAATATACCAAGTACATTGTGAAGTGCCATGGCAACACGCTTC  
TGCCCCAGTTCCTGGGGATGTACCGAGTCAGTGTGGACAACGAAGACAGCTACATGCTTGTGATGCGCAA  
TATGTTTAGCCACCGTCTTCTGTGCACAGGAAGTATGACCTCAAGGGTTCCTAGTGTCCCGGGAAGCC  
AGCGATAAGGAAAAGGTTAAGAATTGCCACCCTAAGGATATGGACTTCTCAACAAGAACCAGAAAAG  
TATATATTGGTGAAGAGGAGAAGAAAATTTCTGGAGAAGCTGAAGAGAGATGTGGAGTTTCTAGTGCA  
GCTGAAGATCATGGACTACAGCCTTCTGCTAGGCATCCACGACATCATTCGGGGCTCTGAACCAGAGGAG  
GAAGCGCCCGTGGGGAGGATGAGTCAGAGGTGGATGGGACTGCAGCCTGACTGGACCTCTGCTCTGG  
TGGGCTCCTATGGCACCTCCCCAGAGGGTATCGGAGGCTACATCCATTCCCATCGGCCCTGGGCCCAGG  
AGAGTTTGAGTCCTTCATTGATGTCTATGCCATCCGGAGTGCTGAAGGAGCCCCCAGAAGGAGGTCTAC  
TTCATGGGCTCATTGATATCCTTACACAGTATGATGCCAAGAAGAAAGCAGCTCATGCAGCCAAAACCTG  
TCAAGCATGGGGCTGGGGCAGAGATCTCTACTGTCCATCCGGAGCAGTATGCTAAGCGATTCTGGATT  
TATTACCAACATCTTTGCC

**ACGCGT**ACGCGGCCGCTCGAGCAGAACTCATCTCAGAAGAGGATCTGGCAGCAAATGATATCCTGGATT  
ACAAGGATGACGACGATAAGGTTTAA



[View online >](#)

**Protein Sequence:** >RC228323 representing NM\_001146259  
Red=Cloning site Green=Tags(s)

MASSSVPPATVSAATAGPGPGFGFASKTKKKHFVQQKVKVFRAADPLVGVFLWGVVHNSINELSQVPPVPM  
 LLPDDFKASSKIKEYCPQVFRNLRDRFGIDDQDYL VSL TRNPPSESEGS DGRFLISYDRTLVIKEVSSD  
 IADMHSNL SNYHQYIVKCHGNTLLPQFLGMYRVSVDNEDSYMLVMRNMFSHRLPVHRKYDLKGSLSVREA  
 SDKEKVKELPTLKDMDFLNKNQKYYIGEEEEKIFLEKLRDVEFLVQLKIMDYSLLLGIHDIIRGSEPEE  
 EAPVREDESEVDGDCSLTGPPALVGSYGTSPGIGGYIHSRPLGPGEFESFIDVYAIRSAEGAPQKEVY  
 FMGLIDILTQYDAKKKAAHAAKTVKHGAGAEISTVHPEQYAKRFLDFITNIFA

TRTRPLEQKLISEEDLAANDILDYKDDDDKV

**Chromatograms:** [https://cdn.origene.com/chromatograms/mk8057\\_f03.zip](https://cdn.origene.com/chromatograms/mk8057_f03.zip)

**Restriction Sites:** SgfI-MluI

**Cloning Scheme:**



**ACCN:** NM\_001146259

**ORF Size:** 1209 bp

**OTI Disclaimer:** The molecular sequence of this clone aligns with the gene accession number as a point of reference only. However, individual transcript sequences of the same gene can differ through naturally occurring variations (e.g. polymorphisms), each with its own valid existence. This clone is substantially in agreement with the reference, but a complete review of all prevailing variants is recommended prior to use. [More info](#)

**OTI Annotation:** This clone was engineered to express the complete ORF with an expression tag. Expression varies depending on the nature of the gene.

**Components:** The ORF clone is ion-exchange column purified and shipped in a 2D barcoded Matrix tube containing 10ug of transfection-ready, dried plasmid DNA (reconstitute with 100 ul of water).

**Reconstitution Method:**

1. Centrifuge at 5,000xg for 5min.
2. Carefully open the tube and add 100ul of sterile water to dissolve the DNA.
3. Close the tube and incubate for 10 minutes at room temperature.
4. Briefly vortex the tube and then do a quick spin (less than 5000xg) to concentrate the liquid at the bottom.
5. Store the suspended plasmid at -20°C. The DNA is stable for at least one year from date of shipping when stored at -20°C.

**RefSeq:** [NM\\_001146259.1](#), [NP\\_001139731.1](#)

**RefSeq ORF:** 1212 bp

**Locus ID:** 79837

**UniProt ID:** [Q8TBX8](#)

**Cytogenetics:** 12q13.3

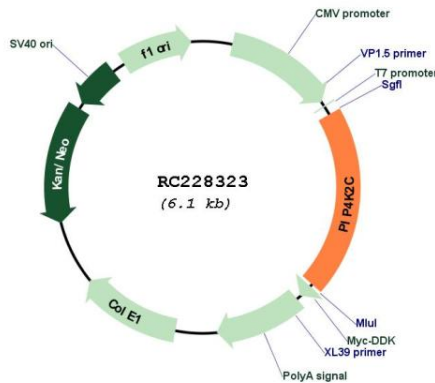
**Protein Families:** Druggable Genome

**Protein Pathways:** Inositol phosphate metabolism, Phosphatidylinositol signaling system, Regulation of actin cytoskeleton

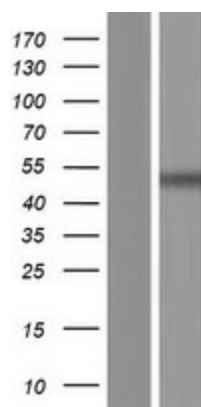
**MW:** 44.9 kDa

**Gene Summary:** May play an important role in the production of Phosphatidylinositol bisphosphate (PIP2), in the endoplasmic reticulum.[UniProtKB/Swiss-Prot Function]

**Product images:**



Circular map for RC228323



Western blot validation of overexpression lysate (Cat# [LY431351]) using anti-DDK antibody (Cat# [TA50011-100]). Left: Cell lysates from untransfected HEK293T cells; Right: Cell lysates from HEK293T cells transfected with RC228323 using transfection reagent MegaTran 2.0 (Cat# [TT210002]).