

## Product datasheet for **RC228321**

### CD39 (ENTPD1) (NM\_001164181) Human Tagged ORF Clone

#### Product data:

Product Type:	Expression Plasmids
Product Name:	CD39 (ENTPD1) (NM_001164181) Human Tagged ORF Clone
Tag:	Myc-DDK
Symbol:	CD39
Synonyms:	ATPDase; CD39; NTPDase-1; SPG64
Mammalian Cell Selection:	Neomycin
Vector:	pCMV6-Entry (PS100001)
E. coli Selection:	Kanamycin (25 ug/mL)
ORF Nucleotide Sequence:	>RC228321 representing NM_001164181 Red=Cloning site Blue=ORF Green=Tags(s)

TTTTGTAATACGACTCACTATAGGGCGGCCGGAATTCGTCGACTGGATCCGGTACCGAGGAGATCTGCC  
GCC**CGATCGC**C

ATGGAAGAGCTAGGGAAGTGATTCCAAGGTCCCAGCACCAAGAGACACCCGTTTACCTGGGAGCCACGG  
CAGGCATGCGGTTGCTCAGGATGGAAAGTGAAGAGTTGGCAGACAGGGTTCTGGATGTGGTGAGAGGAG  
CCTCAGCAACTACCCCTTTGACTTCCAGGGTGCCAGGATCATTACTGGCCAAGAGGAAGGTGCTATGGC  
TGGATTACTATCAACTATCTGCTGGCAAATTCAGTCAGAAAACAAGGTGGTTCAGCATAGTCCCATATG  
AAACCAATAATCAGGAAACCTTTGGAGCTTTGGACCTTGGGGGAGCCTCTACACAAGTCACTTTTGTACC  
CCAAAACCAGACTATCGAGTCCCCAGATAATGCTCTGCAATTTGCCTCTATGGCAAGGACTACAATGTC  
TACACACATAGCTTCTTGTGCTATGGGAAGGATCAGGCACTCTGGCAGAACTGGCCAAGGACATTCAGG  
TTGCAAGTAATGAAATCTCAGGGACCCATGCTTTCATCTGGATATAAGAAGGTAGTGAACGTAAGTGA  
CCTTTACAAGACCCCTGCACCAAGAGATTTGAGATGACTCTTCCATTCCAGCAGTTTGAATCCAGGGT  
ATTGGAAGTATCAACAATGCCATCAAAGCATCCTGGAGCTCTTCAACACCAGTTACTGCCCTTACTCCC  
AGTGTGCCTTCAATGGGATTTTCTTCCACCCTCCAGGGGATTTTGGGCATTTTCACTTTTACTT  
TGTGATGAAGTTTTAACTTGACATCAGAGAAAGTCTCTCAGGAAAAGGTGACTGAGATGATGAAAAAG  
TTCTGTGCTCAGCCTTGGGAGGAGATAAAAACATCTTACGCTGGAGTAAAGGAGAAGTACCTGAGTGAAT  
ACTGCTTTTCTGGTACCTACATTCTCCCTCCTTCTGCAAGGCTATCATTTTACAGCTGATTCCTGGGA  
GCACATCCATTTTATTGGCAAGATCCAGGGCAGCGACGCCGGCTGGACTTTGGGCTACATGCTGAACCTG  
ACCAACATGATCCAGCTGAGCAACCATGTCCACACCTCTCTCCACTCCACCTATGTCTTCTCATGG  
TTCTATTCTCCCTGGTCTTTTACAGTGGCCATCATAGGCTTGCTTATCTTTACAAGCCTTCATATTT  
CTGGAAGATATGGTA

**ACGCGT**ACGCGGCCGCTCGAGCAGAACTCATCTCAGAAGAGGATCTGGCAGCAAATGATATCCTGGATT  
ACAAGGATGACGACGATAAGGTTTAA



[View online »](#)

**Protein Sequence:** >RC228321 representing NM\_001164181  
Red=Cloning site Green=Tags(s)

MERAREVIPRSQHQETPVYLGATAGMRLLRMESEELADRVLDVVERSLSNYPDFQGARIIITGQEEGAYG  
 WITINYLLGKFSQKTRWFSIVPYETNNQETFGALDLGGASTQVTFVPQNQTIESPDNALQFRLYKGDYNNV  
 YTHSFLCYGKDQALWQKLAKDIQVASNEILRDPCHFPGYKVVNVSDLYKTPCTKRFEMTLPFQQFEIQG  
 IGNYQQCHQSILELFNTSYCPYSQCAFNGIFLPLQGDGAFSAFYFVMKFLNLTSEKVSQEKVTEMMKK  
 FCAQPWEEIKTSYAGVKEKYLSEYCFSGTYILSLLLQGYHFTADSWEIHFIKGIQGS DAGWTLGYMLNL  
 TNMIPAEQPLSTPLSHSTYVFLMVLFSLVLFTVAIIGLLIFHKPSYFWKDMV

TRTRPLEQKLISEEDLAANDILDYKDDDDKV

**Chromatograms:** [https://cdn.origene.com/chromatograms/mk8057\\_e08.zip](https://cdn.origene.com/chromatograms/mk8057_e08.zip)

**Restriction Sites:** SgfI-MluI

**Cloning Scheme:**



**ACCN:** NM\_001164181

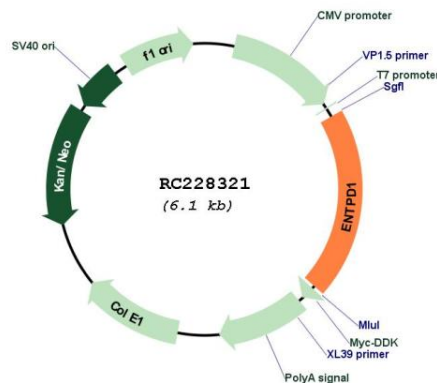
**ORF Size:** 1206 bp

**OTI Disclaimer:** Due to the inherent nature of this plasmid, standard methods to replicate additional amounts of DNA in E. coli are highly likely to result in mutations and/or rearrangements. Therefore, OriGene does not guarantee the capability to replicate this plasmid DNA. Additional amounts of DNA can be purchased from OriGene with batch-specific, full-sequence verification at a reduced cost. Please contact our customer care team at [custsupport@origene.com](mailto:custsupport@origene.com) or by calling 301.340.3188 option 3 for pricing and delivery.

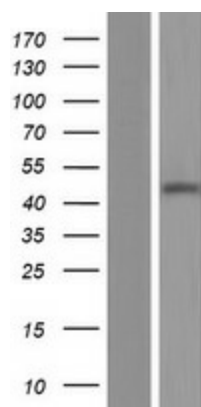
The molecular sequence of this clone aligns with the gene accession number as a point of reference only. However, individual transcript sequences of the same gene can differ through naturally occurring variations (e.g. polymorphisms), each with its own valid existence. This clone is substantially in agreement with the reference, but a complete review of all prevailing variants is recommended prior to use. [More info](#)

<b>OTI Annotation:</b>	This clone was engineered to express the complete ORF with an expression tag. Expression varies depending on the nature of the gene.
<b>Components:</b>	The ORF clone is ion-exchange column purified and shipped in a 2D barcoded Matrix tube containing 10ug of transfection-ready, dried plasmid DNA (reconstitute with 100 ul of water).
<b>Reconstitution Method:</b>	<ol style="list-style-type: none"><li>1. Centrifuge at 5,000xg for 5min.</li><li>2. Carefully open the tube and add 100ul of sterile water to dissolve the DNA.</li><li>3. Close the tube and incubate for 10 minutes at room temperature.</li><li>4. Briefly vortex the tube and then do a quick spin (less than 5000xg) to concentrate the liquid at the bottom.</li><li>5. Store the suspended plasmid at -20°C. The DNA is stable for at least one year from date of shipping when stored at -20°C.</li></ol>
<b>RefSeq:</b>	<u>NM_001164181.1, NP_001157653.1</u>
<b>RefSeq ORF:</b>	1209 bp
<b>Locus ID:</b>	953
<b>UniProt ID:</b>	<u>P49961</u>
<b>Cytogenetics:</b>	10q24.1
<b>Protein Families:</b>	Transmembrane
<b>Protein Pathways:</b>	Purine metabolism, Pyrimidine metabolism
<b>MW:</b>	46 kDa
<b>Gene Summary:</b>	The protein encoded by this gene is a plasma membrane protein that hydrolyzes extracellular ATP and ADP to AMP. Inhibition of this protein's activity may confer anticancer benefits. Several transcript variants encoding different isoforms have been found for this gene. [provided by RefSeq, Aug 2015]

## Product images:



Circular map for RC228321



Western blot validation of overexpression lysate (Cat# [LY431349]) using anti-DDK antibody (Cat# [TA50011-100]). Left: Cell lysates from untransfected HEK293T cells; Right: Cell lysates from HEK293T cells transfected with RC228321 using transfection reagent MegaTran 2.0 (Cat# [TT210002]).