

## Product datasheet for **RC228320**

### CC2D2B (NM\_001159747) Human Tagged ORF Clone

#### Product data:

**Product Type:** Expression Plasmids  
**Product Name:** CC2D2B (NM\_001159747) Human Tagged ORF Clone  
**Tag:** Myc-DDK  
**Symbol:** CC2D2B  
**Synonyms:** C10orf130; C10orf131  
**Mammalian Cell Selection:** Neomycin  
**Vector:** pCMV6-Entry (PS100001)  
**E. coli Selection:** Kanamycin (25 ug/mL)  
**ORF Nucleotide Sequence:** >RC228320 representing NM\_001159747  
 Red=Cloning site Blue=ORF Green=Tags(s)

TTTTGTAATACGACTCACTATAGGGCGCCGGGAATTCGTCGACTGGATCCGGTACCGAGGAGATCTGCC  
 GCC**CGATCGCC**

ATGATGACTGAAAAACATGAGGATCACTGTCTCAAGAGCTGTAGTGGTCACTCATATATAAGAAAGAATT  
 GGCTTGGATGCATTGTCTCCCTTTTTCTGCTCTTCTGCAACAATCTGAGTTTTAGATCAACAGAGGT  
 CTTGCAGAGACACAGATTTTTAAAAAGAATTGTAAGGCAATGTTCCCAACCGAAGAATCGTAACACT  
 GTTTTTAATGATGAAGGGATACAGTTCCTAGTCACAAGATATATCAAGGCATTAATCCACCTCAGCAAC  
 TTCTGGATATATTTCTTACAATTCTAATGCAACATTTGACCTCATTGCTCGATTTGTATCTTTGATTCC  
 TTTTGTGCCTAATACACCAGATGAAAATGATGGCTCTGATATATGGATGACATCAGAGCACTGCATCAGT  
 TTAGCTATCGAAATAAGGAGGAGCATGCCATCCTTCTCTGTAATTTCTTCTGTATTTGGAAAGAAGG  
 CACTGGTCTCTTGGAAACGTCAGTGTTAGAAGGGCATGTGGCTTATGTAGTAACTCAAGAACTAATGA  
 ATATTTGCTTTGGAAATCCATCAACTGGCCAATGTTATAAGCAGTTTGACCCGTTTTGTCCCTAAAAAGT  
 GTAGATTGTTTGTGATGATAGAAATGCTGGTTAATATTCAACAAAATAATACACCAATGGCTGTAT  
 TTTTGTACTATTCAAAGGAAAGTTTCTGGAAGCAGTTCCTTCAAAAAACGTTCAAGGAACAAAAATACA  
 AAGCATAACAGCCTGAAGAAATAATTTATTTGAACTGATAAAAGCATGGTGAAGATCTAAGGAATAGG  
 ATCGAAAGGACTCTGAAGAGTAAAGTGATGGAATGGCGACCTAAACACCCAACATTGGAATCGACAGT  
 GTACTTTTATTTTGCACAAATCCTTCTAAGCTGGAATTTGGCATAGGAAGCTTTGTTTCATCTGAAGG  
 AGATAATGAATTTGAAAGAATACTACAATTTTATTTGGGTACGGGATTTCCCATCCAGATGCCATACATT  
 GATGTACAGTCAATTATTGATGCTGTTTATCAAATGGAATTCCTCTGCTGAATTTCCCGACAGAGAA  
 TTGCTTTAGCTGTATACATTACCCATACCCAAACAACATATTATCTGTGTGGGTCTATTTGGCTTCCT  
 AGTTCAACATCAA

**ACGGT**ACGGCGCGCTCGAGCAGAACTCATCTCAGAAGAGGATCTGGCAGCAATGATATCCTGGATT  
 ACAAGGATGACGACGATAAGGTTTAA



[View online »](#)

**Protein Sequence:** >RC228320 representing NM\_001159747  
Red=Cloning site Green=Tags(s)

MMTEKHEDHCLKSCSGHSYIRKNWLGCIVFPFSALLQQSEFLDQTEVLQRAQIFKKNCKAMFPNRRIVTT  
 VFNDEGIQFLVTRYIKALNPPQQLLDIFLHNSNATFDLIARFVSLIPFPNTPDENDDGSDIWMTEHCIS  
 LAIGNKEEHAILLCNFFLYFGKKALVLLGTSVLEGHVAYVVTQETNEYLLWNPSTGQCYKQDFPFCPLKS  
 VDCLFDDRNWVFNIQNNTPMAVFFDYKESFWKQLLPKNVQGTKIQSIQPEEIIYFETDKSMVEDLRNR  
 IERTLKSVMWRPKHPHTHWRQCTFILRQILPKLEFGIGSFVSSEGDNEFERILQFYWVTGFPIQMPYI  
 DVQSIIDAVYQTGIHSAEFPQTEFALAVYIHPYPNNILSVWVYLASLVQHQ

TRTRPLEQKLISEEDLAANDILDYKDDDDKV

**Chromatograms:** [https://cdn.origene.com/chromatograms/mk8057\\_d09.zip](https://cdn.origene.com/chromatograms/mk8057_d09.zip)

**Restriction Sites:** SgfI-MluI

**Cloning Scheme:**



\* The last codon before the Stop codon of the ORF

**ACCN:** NM\_001159747

**ORF Size:** 1203 bp

**OTI Disclaimer:** The molecular sequence of this clone aligns with the gene accession number as a point of reference only. However, individual transcript sequences of the same gene can differ through naturally occurring variations (e.g. polymorphisms), each with its own valid existence. This clone is substantially in agreement with the reference, but a complete review of all prevailing variants is recommended prior to use. [More info](#)

**OTI Annotation:** This clone was engineered to express the complete ORF with an expression tag. Expression varies depending on the nature of the gene.

**Components:** The ORF clone is ion-exchange column purified and shipped in a 2D barcoded Matrix tube containing 10ug of transfection-ready, dried plasmid DNA (reconstitute with 100 ul of water).

- Reconstitution Method:**
1. Centrifuge at 5,000xg for 5min.
  2. Carefully open the tube and add 100ul of sterile water to dissolve the DNA.
  3. Close the tube and incubate for 10 minutes at room temperature.
  4. Briefly vortex the tube and then do a quick spin (less than 5000xg) to concentrate the liquid at the bottom.
  5. Store the suspended plasmid at -20°C. The DNA is stable for at least one year from date of shipping when stored at -20°C.

**RefSeq:** [NM\\_001159747.2](#)

**RefSeq ORF:** 1206 bp

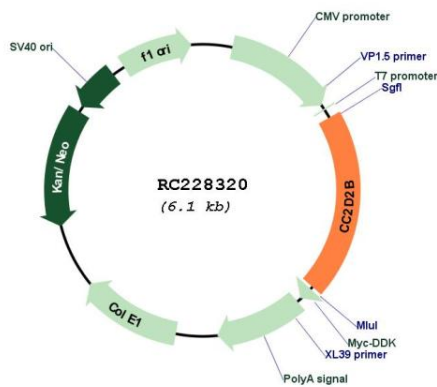
**Locus ID:** 387707

**UniProt ID:** [Q6DHV5](#)

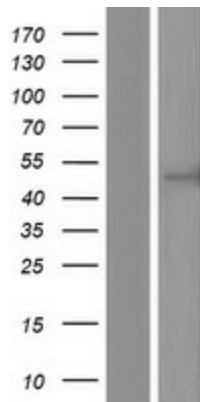
**Cytogenetics:** 10q24.1

**MW:** 46.6 kDa

**Product images:**



Circular map for RC228320



Western blot validation of overexpression lysate (Cat# [LY431348]) using anti-DDK antibody (Cat# [TA50011-100]). Left: Cell lysates from untransfected HEK293T cells; Right: Cell lysates from HEK293T cells transfected with RC228320 using transfection reagent MegaTran 2.0 (Cat# [TT210002]).