

Product datasheet for **RC228304**

DISC1 (NM_001164554) Human Tagged ORF Clone

Product data:

Product Type: Expression Plasmids
Product Name: DISC1 (NM_001164554) Human Tagged ORF Clone
Tag: Myc-DDK
Symbol: DISC1
Synonyms: C1orf136; SCZD9
Mammalian Cell Selection: Neomycin
Vector: pCMV6-Entry (PS100001)
E. coli Selection: Kanamycin (25 ug/mL)
ORF Nucleotide Sequence: >RC228304 representing NM_001164554
 Red=Cloning site Blue=ORF Green=Tags(s)

TTTTGTAATACGACTCACTATAGGGCGGCCGGGAATTCGTCGACTGGATCCGGTACCGAGGAGATCTGCC
 GCC**CGATCGC**C

ATGCCAGGCGGGGTCTCAGGGCGCCCCAGCCGCCCGCGGGCGGGCGGTGAGCCACCGCGCAGGCA
 GCCGGGATTGCTTACCACCTGCAGCGTGTCTTCGGAGGCGGGGTGGCACGGAGGCCGGGTACATGAG
 AAGCTCGACAGGGCTGGGATCGGGTTCCTTTCCCAGCAGTGGGCACACTGTTCCGGTCCCAGGAGGG
 GTGTCTGGCGAGGAGTCCACCCTCGGAGTCCAGGGCCAGACAGTGTGGCCTTGACTCGAGAGGCCTCT
 TGGTCCGAGCCCTGTTCCAAGAGTGCAGCAGCCCTACTGTGACCTCTGTGAGAGGAACCTCGGCGCA
 CTTTGGGATTCAGCTCAGAGGTGGCACCAGATTGCCTGACAGGCTTAGCTGGCCGTGTGGCCTGGGAGT
 GCTGGGTGGCAGCAAGAGTTTGCAGCCATGGATAGTTCTGAGACCCTGGACGCCAGCTGGGAGGCAGCCT
 GCAGCGATGGAGCAAGGCGTGTCCGGGCAGCAGGCTCTCTGCCATCAGCAGAGTTGAGTAGCAACAGCTG
 CAGCCCTGGCTGTGGCCCTGAGGTCCCCCAACCCTCTGGCTCTCACAGTGCCTTTACCTCAAGCTTT
 AGCTTTATTCGGCTCTCGCTTGGCTCTGCCGGGAACGTGGAGAAGCAGAAGGCTGCCACCATCCAGAG
 AGGCTGAGTCCCATTGCCAGAGCCCCAGGAGATGGGAGCCAAAGCTGCCAGCTTGGACGGGCTCACGA
 GGACCCGCGATGTCTCTCGGCCCTTCAGTCTCTTGGCTACACGGGTCTCTGCAGACTTGGCCCAGGCC
 GCAAGGAACAGCTCCAGGCCAGAGCGTGACATGCATTCTTTACCAGACATGGACCCTGGCTCCTCCAGTT
 CTCTGGATCCCTCACTGGCTGGCTGTGGTGGTGTGAGGAGCAGCGGCTCAGGGGATGCCACTCTTGGGA
 CACCCTGCTCAGGAAATGGGAGCCAGTGTGCGGGACTGCCTGCTGAGAAACCGGAGGCAGATGGAGGTA
 ATATCCTTAAGATTAACACTTCAGAAACTTCAGGAAGATGCAGTTGAGAATGATGATTATGATAAAGGTG
 AGTTT

ACGCGTACGCGGCCGCTCGAGCAGAAACTCATCTCAGAAGAGGATCTGGCAGCAATGATATCCTGGATT
 ACAAGGATGACGACGATAAGGTTTAA



[View online >](#)

Protein Sequence: >RC228304 representing NM_001164554
Red=Cloning site Green=Tags(s)

MPGGGPQGAPAAAGGGGVSHRAGSRDCLPPAACFRRRLARRPGYMRSSSTGPGIGFLSPAVGTLFRFPGG
 VSGEESHSESRARQCGLDSRGLLVRSVSKSAAAPTVTSVRGTSAHFGIQLRGGTRLPDRLSWPCGPGS
 AGWQQEF AAMDSSSETLDASWEAACSDGARRVRAAGSLPSAELSSNSCSPGCGPEVPPTPPGSHSAFTSSF
 SFIRLSLGSAGERGEAEGCPPSREAESHQSPQEMGAKAASLDGPHEPRCLSRPFLLATRVSADLAQA
 ARNSSRPERDMHSLPDMDPGSSSLDPSLAGCGGDGSSSGDAHSWDTLLRKWEPVLRDCLLRNRQMEV
 ISLRKLKQLQEDAVENDDYDKGEF

TRTRPLEQKLISEEDLAANDILDYKDDDDKV

Chromatograms: https://cdn.origene.com/chromatograms/mk8055_f08.zip

Restriction Sites: SgfI-MluI

Cloning Scheme:



* The last codon before the Stop codon of the ORF

ACCN: NM_001164554

ORF Size: 1125 bp

OTI Disclaimer: The molecular sequence of this clone aligns with the gene accession number as a point of reference only. However, individual transcript sequences of the same gene can differ through naturally occurring variations (e.g. polymorphisms), each with its own valid existence. This clone is substantially in agreement with the reference, but a complete review of all prevailing variants is recommended prior to use. [More info](#)

OTI Annotation: This clone was engineered to express the complete ORF with an expression tag. Expression varies depending on the nature of the gene.

Components: The ORF clone is ion-exchange column purified and shipped in a 2D barcoded Matrix tube containing 10ug of transfection-ready, dried plasmid DNA (reconstitute with 100 ul of water).

Reconstitution Method:

1. Centrifuge at 5,000xg for 5min.
2. Carefully open the tube and add 100ul of sterile water to dissolve the DNA.
3. Close the tube and incubate for 10 minutes at room temperature.
4. Briefly vortex the tube and then do a quick spin (less than 5000xg) to concentrate the liquid at the bottom.
5. Store the suspended plasmid at -20°C. The DNA is stable for at least one year from date of shipping when stored at -20°C.

RefSeq: [NM_001164554.2](#)

RefSeq ORF: 1128 bp

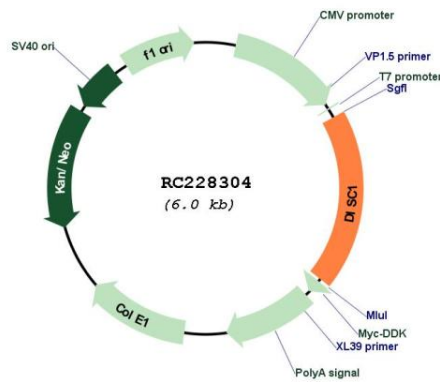
Locus ID: 27185

Cytogenetics: 1q42.2

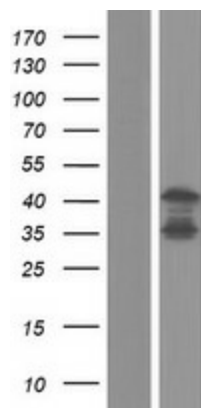
MW: 39.1 kDa

Gene Summary: This gene encodes a protein with multiple coiled coil motifs which is located in the nucleus, cytoplasm and mitochondria. The protein is involved in neurite outgrowth and cortical development through its interaction with other proteins. This gene is disrupted in a t(1;11) (q42.1;q14.3) translocation which segregates with schizophrenia and related psychiatric disorders in a large Scottish family. Alternate transcriptional splice variants, encoding different isoforms, have been characterized. [provided by RefSeq, Jul 2008]

Product images:



Circular map for RC228304



Western blot validation of overexpression lysate (Cat# [LY431332]) using anti-DDK antibody (Cat# [TA50011-100]). Left: Cell lysates from untransfected HEK293T cells; Right: Cell lysates from HEK293T cells transfected with RC228304 using transfection reagent MegaTran 2.0 (Cat# [TT210002]).