

## Product datasheet for RC228301

### CCR3 (NM\_001164680) Human Tagged ORF Clone

#### Product data:

Product Type:	Expression Plasmids
Product Name:	CCR3 (NM_001164680) Human Tagged ORF Clone
Tag:	Myc-DDK
Symbol:	CCR3
Synonyms:	CC-CKR-3; C C CKR3; CD193; CKR 3; CKR3; CMKBR3
Mammalian Cell Selection:	Neomycin
Vector:	pCMV6-Entry (PS100001)
E. coli Selection:	Kanamycin (25 ug/mL)
ORF Nucleotide Sequence:	>RC228301 representing NM_001164680 Red=Cloning site Blue=ORF Green=Tags(s)

TTTTGTAATACGACTCACTATAGGGCGGCCGGAATTCGTCGACTGGATCCGGTACCGAGGAGATCTGCC  
GCC**CGATCGCC**

ATGCCATTTGGAATAAGAATGCTGTTAAGAGCACACAAGCCAGGGAGAAGTAAATGACAACCTCACTAG  
ATACAGTTGAGACCTTTGGTACCACATCCTACTATGATGACGTGGGCCTGCTCTGTGAAAAAGCTGATAC  
CAGAGCACTGATGGCCAGTTTGTGCCCGCTGTACTCCCTGGTGTCTACTGTGGGCCTCTTGGGCAAT  
GTGGTGGTGGTATGATCCTCATAAAATACAGGAGGCTCCGAATTATGACCAACATCTACCTGCTCAACC  
TGGCCATTTCCGACCTGCTCTTCTCGTACCCTTCCATTCTGGATCCACTATGTCAGGGGGCATAACTG  
GGTTTTGGCCATGGCATGTGTAAGCTCCTCTCAGGGTTTTATCACACAGGCTTGTACAGCGAGATCTTT  
TTCATAATCCTGCTGACAATCGACAGGTACCTGGCCATTGTCCATGCTGTGTTTGGCCTTCGAGCCCGGA  
CTGTCACTTTTGGTGTATCACCAGCATCGTCACTGGGGCCTGGCAGTGTAGCAGCTCTTCTGAATT  
TATCTTATGAGACTGAAGAGTTGTTGAAGAGACTCTTTCAGTGCTCTTTACCCAGAGGATACAGTA  
TATAGCTGGAGGCATTTCCACACTCTGAGAATGACCATCTTCTGTCTCGTCTCCCTCTGCTCGTTATGG  
CCATCTGCTACACAGGAATCATCAAACGCTGCTGAGGTGCCCGAGTAAAAAAGTACAAGGCCATCCG  
GCTCATTTTTGTATCATGCGGGTGTTCATTTCTGGACACCCTACAATGTGGCTATCCTTCTCTCT  
TCCTATCAATCCATCTTATTTGAAATGACTGTGAGCGGAGCAAGCATCTGGACCTGGTCAATGCTGGTGA  
CAGAGGTGATCGCTACTCCACTGCTGCATGAACCCGGTATCTACGCCTTTGTTGGAGAGAGGTTCCG  
GAAGTACCTGCGCACTTCTCCACAGGCACTTCTCATGCACCTGGGCAGATACATCCCATTCTTCTCT  
AGTGAGAAGCTGGAAAGAACCAGCTCTGTCTCCATCCACAGCAGAGCCGGAATCTCTATTGTGTTT

**ACGCGT**ACGCGGCCGCTCGAGCAGAAACTCATCTCAGAAGAGGATCTGGCAGCAAATGATATCCTGGATT  
ACAAGGATGACGACGATAAGGTTTAA



[View online »](#)

**Protein Sequence:** >RC228301 representing NM\_001164680  
Red=Cloning site Green=Tags(s)

MPFGIRMLLRAHKPGRSEMTTSLDVTETFGTTSYDDVGLLCEKADTRALMAQFVPPLYSLVFTVGLLGN  
 VVVVMILIKYRRLRIMTNIYLLNLAISDLLFLVTLPFWIHYVRGHNWVFGHGMCKLLSGFYHTGLYSEIF  
 FIILLTIDRYLAIVHAVFALRARTVTFGVITSIVTWGLAVLAALPEFIFYETEELFEETLCSALYPEDTV  
 YSWRHFHTLRMTIFCLVPLLVMAICYGTGIKTLRLRCPKSKKYKAIRLIFVIMAVFFIFWTPYNVAILLS  
 SYQSILFGNDCERSKHLDLVMLVTEVIAYSHCCMNPVIYAFVGERFRKYLRHFFHRHLLMHLGRYIPFLP  
 SEKLERTSSVSPSTAEPELSIVF

TRTRPLEQKLISEEDLAANDILDYKDDDDKV

**Chromatograms:** [https://cdn.origene.com/chromatograms/mk8055\\_e03.zip](https://cdn.origene.com/chromatograms/mk8055_e03.zip)

**Restriction Sites:** SgfI-MluI

**Cloning Scheme:**



**ACCN:** NM\_001164680

**ORF Size:** 1119 bp

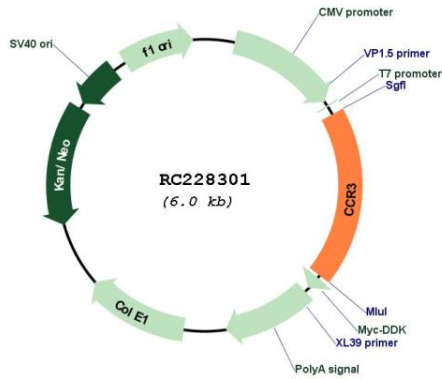
**OTI Disclaimer:** The molecular sequence of this clone aligns with the gene accession number as a point of reference only. However, individual transcript sequences of the same gene can differ through naturally occurring variations (e.g. polymorphisms), each with its own valid existence. This clone is substantially in agreement with the reference, but a complete review of all prevailing variants is recommended prior to use. [More info](#)

**OTI Annotation:** This clone was engineered to express the complete ORF with an expression tag. Expression varies depending on the nature of the gene.

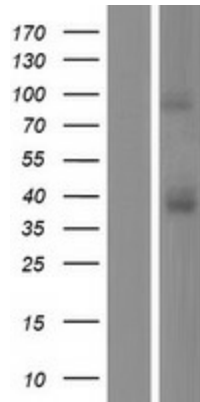
**Components:** The ORF clone is ion-exchange column purified and shipped in a 2D barcoded Matrix tube containing 10ug of transfection-ready, dried plasmid DNA (reconstitute with 100 ul of water).

<b>Reconstitution Method:</b>	<ol style="list-style-type: none"><li>1. Centrifuge at 5,000xg for 5min.</li><li>2. Carefully open the tube and add 100ul of sterile water to dissolve the DNA.</li><li>3. Close the tube and incubate for 10 minutes at room temperature.</li><li>4. Briefly vortex the tube and then do a quick spin (less than 5000xg) to concentrate the liquid at the bottom.</li><li>5. Store the suspended plasmid at -20°C. The DNA is stable for at least one year from date of shipping when stored at -20°C.</li></ol>
<b>Note:</b>	Plasmids are not sterile. For experiments where strict sterility is required, filtration with 0.22um filter is required.
<b>RefSeq:</b>	<a href="#">NM_001164680.2</a>
<b>RefSeq ORF:</b>	1122 bp
<b>Locus ID:</b>	1232
<b>Cytogenetics:</b>	3p21.31
<b>Protein Families:</b>	Druggable Genome, GPCR, Transmembrane
<b>Protein Pathways:</b>	Chemokine signaling pathway, Cytokine-cytokine receptor interaction
<b>MW:</b>	42.9 kDa
<b>Gene Summary:</b>	<p>The protein encoded by this gene is a receptor for C-C type chemokines. It belongs to family 1 of the G protein-coupled receptors. This receptor binds and responds to a variety of chemokines, including eotaxin (CCL11), eotaxin-3 (CCL26), MCP-3 (CCL7), MCP-4 (CCL13), and RANTES (CCL5). It is highly expressed in eosinophils and basophils, and is also detected in TH1 and TH2 cells, as well as in airway epithelial cells. This receptor may contribute to the accumulation and activation of eosinophils and other inflammatory cells in the allergic airway. It is also known to be an entry co-receptor for HIV-1. This gene and seven other chemokine receptor genes form a chemokine receptor gene cluster on the chromosomal region 3p21. Alternatively spliced transcript variants have been described. [provided by RefSeq, Sep 2009]</p>

Product images:



Circular map for RC228301



Western blot validation of overexpression lysate (Cat# [LY431329]) using anti-DDK antibody (Cat# [TA50011-100]). Left: Cell lysates from untransfected HEK293T cells; Right: Cell lysates from HEK293T cells transfected with RC228301 using transfection reagent MegaTran 2.0 (Cat# [TT210002]).