

## Product datasheet for **RC228300**

### PIP4K2C (NM\_001146260) Human Tagged ORF Clone

#### Product data:

Product Type:	Expression Plasmids
Product Name:	PIP4K2C (NM_001146260) Human Tagged ORF Clone
Tag:	Myc-DDK
Symbol:	PIP4K2C
Synonyms:	PIP5K2C
Mammalian Cell Selection:	Neomycin
Vector:	pCMV6-Entry (PS100001)
E. coli Selection:	Kanamycin (25 ug/mL)
ORF Nucleotide Sequence:	>RC228300 representing NM_001146260 Red=Cloning site Blue=ORF Green=Tags(s)

TTTTGTAATACGACTCACTATAGGGCGGCCGGAATTCGTCGACTGGATCCGGTACCGAGGAGATCTGCC  
GCC**CGATCGC**C

ATGGCGTCCTCCTCGGTCCCACCAGCCACGGTATCGGGCGGACAGCAGGCCCGGCCAGGTTTCGGCT  
TCGCCTCCAAGACCAAGAAGAAGCATTTTCGTGCAGCAGAAGGTGAAGGTGTTCCGGGCGGCCGACCCGCT  
GGTGGGTGTGTTCTGTGGGGCTAGCCCACTCGATCAATGAGCTCAGCCAGGTGCCTCCCCGGTGATG  
CTGCTGCCAGATGACTTTAAGGCCAGCTCAAGATCAAGGTCAACAATCACCTTTCCACAGGGAAAATC  
TGCCAGTCATTTCAAGTTCAAGGAGTATTGTCCCAGGTCTTCAGGAACCTCCGTGATCGATTTGGCAT  
TGATGACCAAGATTACTGTACATTGTGAAGTGCCATGGCAACACGCTTCTGCCCAAGTTCTGGGGATG  
TACCGAGTCAGTGTGGACAACGAAGACAGCTACATGCTTGTGATGCGCAATATGTTTAGCCACCGTCTTC  
CTGTGCACAGGAAGTATGACCTCAAGGGTTCCTAGTGTCCCAGGAAAGCCAGCGATAAAGGAAAAGTTAA  
AGAATTGCCACCCCTTAAGGATATGGACTTTCTCAACAAGAACAGAAAGTATATATTGGTGAAGAGGAG  
AAGAAAATATTTCTGGAGAAGCTGAAGAGAGATGTGGAGTTTCTAGTGCAGCTGAAGATCATGGACTACA  
GCCTTCTGCTAGGCATCCACGACATCATTCCGGGCTCTGAACCAGAGGAGGAAGCCCGCTGCGGGAGGA  
TGAGTCAGAGGTGGATGGGACTGCAGCCTGACTGGACCTCCTGCTCTGGTGGGCTCCTATGGCACCTCC  
CCAGAGGGTATCGGAGGCTACATCCATCCCATCGGCCCTGGGCCAGGAGAGTTTGGTCTTTCATTG  
ATGTCTATGCCATCCGGAGTGTGAAGGAGCCCCCAGAAGGAGGTCTACTTCATGGGCCTATTGATAT  
CCTTACACAGTATGATGCCAAGAAGAAAGCAGCTCATGCAGCAAAAGTCAAGCATGGGGCTGGGGCA  
GAGATCTACTGTCCATCCGGAGCAGTATGCTAAGCGATTCTGGATTTTATTACCAACATCTTTGCC

**ACGCGT**ACGCGGCCGCTCGAGCAGAACTCATCTCAGAAGAGGATCTGGCAGCAATGATATCCTGGATT  
ACAAGGATGACGACGATAAGGTTTAA



[View online >](#)

Protein Sequence: >RC228300 representing NM\_001146260  
 Red=Cloning site Green=Tags(s)

MASSSVPPATVSAATAGPGPGFGFASKTKKKHFVQQKVKVFRAADPLVGVFLWGVVHSINELSQVPPPPVM  
 LLPDDFKASSKIKVNNHLFHRENLP SHFKFKEYCPQVFRNLRDRFGIDDQDYLIVKCHGNTLLPQFLGM  
 YRVSDNEDSYMLVMRNMFSHRLPVHRKYDLKGSLSVREASDKEKVKELPTLKDMDFLNKNQKVYIGEEE  
 KKIFLEKLKRDVEFLVQLKIMDYSLLLGIHDIIRGSEPEEEAPVREDESEVDGDCSLTGPPALVGSYGTS  
 PEGIGGYIHSRPLGPGEFESFIDVYAIRS AEGAPQKEVYFMGLIDILTQYDAKKKAAHAAKTVKHGAGA  
 EISTVHPEQYAKRFLDFITNIFA

TRTRPLEQKLISEEDLAANDILDYKDDDDKV

Chromatograms: [https://cdn.origene.com/chromatograms/mk8055\\_e02.zip](https://cdn.origene.com/chromatograms/mk8055_e02.zip)

Restriction Sites: SgfI-MluI

Cloning Scheme:



ACCN: NM\_001146260

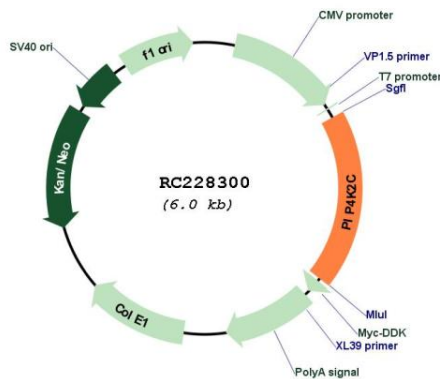
ORF Size: 1119 bp

OTI Disclaimer: Due to the inherent nature of this plasmid, standard methods to replicate additional amounts of DNA in E. coli are highly likely to result in mutations and/or rearrangements. Therefore, OriGene does not guarantee the capability to replicate this plasmid DNA. Additional amounts of DNA can be purchased from OriGene with batch-specific, full-sequence verification at a reduced cost. Please contact our customer care team at [custsupport@origene.com](mailto:custsupport@origene.com) or by calling 301.340.3188 option 3 for pricing and delivery.

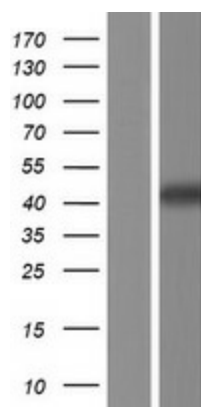
The molecular sequence of this clone aligns with the gene accession number as a point of reference only. However, individual transcript sequences of the same gene can differ through naturally occurring variations (e.g. polymorphisms), each with its own valid existence. This clone is substantially in agreement with the reference, but a complete review of all prevailing variants is recommended prior to use. [More info](#)

<b>OTI Annotation:</b>	This clone was engineered to express the complete ORF with an expression tag. Expression varies depending on the nature of the gene.
<b>Components:</b>	The ORF clone is ion-exchange column purified and shipped in a 2D barcoded Matrix tube containing 10ug of transfection-ready, dried plasmid DNA (reconstitute with 100 ul of water).
<b>Reconstitution Method:</b>	<ol style="list-style-type: none"> <li>1. Centrifuge at 5,000xg for 5min.</li> <li>2. Carefully open the tube and add 100ul of sterile water to dissolve the DNA.</li> <li>3. Close the tube and incubate for 10 minutes at room temperature.</li> <li>4. Briefly vortex the tube and then do a quick spin (less than 5000xg) to concentrate the liquid at the bottom.</li> <li>5. Store the suspended plasmid at -20°C. The DNA is stable for at least one year from date of shipping when stored at -20°C.</li> </ol>
<b>RefSeq:</b>	<u>NM_001146260.1, NP_001139732.1</u>
<b>RefSeq ORF:</b>	1122 bp
<b>Locus ID:</b>	79837
<b>UniProt ID:</b>	<u>Q8TBX8</u>
<b>Cytogenetics:</b>	12q13.3
<b>Protein Families:</b>	Druggable Genome
<b>Protein Pathways:</b>	Inositol phosphate metabolism, Phosphatidylinositol signaling system, Regulation of actin cytoskeleton
<b>MW:</b>	41.7 kDa
<b>Gene Summary:</b>	May play an important role in the production of Phosphatidylinositol bisphosphate (PIP2), in the endoplasmic reticulum.[UniProtKB/Swiss-Prot Function]

### Product images:



Circular map for RC228300



Western blot validation of overexpression lysate (Cat# [LY431328]) using anti-DDK antibody (Cat# [TA50011-100]). Left: Cell lysates from untransfected HEK293T cells; Right: Cell lysates from HEK293T cells transfected with RC228300 using transfection reagent MegaTran 2.0 (Cat# [TT210002]).