

Product datasheet for RC228299

TUBB8 (NM_001164154) Human Tagged ORF Clone

Product data:

Product Type:	Expression Plasmids
Product Name:	TUBB8 (NM_001164154) Human Tagged ORF Clone
Tag:	Myc-DDK
Symbol:	TUBB8
Synonyms:	FLJ40100; RP11-631M21.2
Mammalian Cell Selection:	Neomycin
Vector:	pCMV6-Entry (PS100001)
E. coli Selection:	Kanamycin (25 ug/mL)
ORF Nucleotide Sequence:	>RC228299 representing NM_001164154 Red=Cloning site Blue=ORF Green=Tags(s)

TTTTGTAATACGACTCACTATAGGGCGGCCGGAATTCGTCGACTGGATCCGGTACCGAGGAGATCTGCC
GCC**CGATCGCC**

ATGGACTCTGTGCGCTCGGGCCCTTCGGGCAGGTCTTCAGGCCAGACAACCTTCATCTTCGGTCAGTGTG
GGGCCGAAACAACCTGGGCCAAGGGACTACACCGAAGGCGGGAGCTGATGGAGTCAGTATGGACGT
TGTCAGAAAGGAGGCTGAGAGCTGTGACTGCCTGCAGGGTTCCAGCTGACCCACTCCCTGGTGGGGG
ACTGGGTCTGGGATGGTACCCTTCTGCTCAGTAAGATCCGGGAGGAGTACCCAGACAGGATCATAACA
CATTTCAGCATCCTGCCCTCGCCAAGGTGTCGGACACCGTGGTGGAGCCCTACAACGCCACCTCTCAGT
CCACCAGCTCATAGAAAACGCAGATGAGACCTTTGTCATAGATAACGAAGCTCTGTATGACATATGTTCC
AAGACCCTAAAACCTGCCACACCCACCTATGGTGACCTGAACCACCTGGTGTCTGCTACCATGAGTGGGG
TCACCAGTGCCTGCGCTTCCCGGGCCAGCTGAATGCTGACCTGCGGAAGCTGGCCGTGAACATGGTCCC
GTTTCCCCGGCTGCATTTCTTATGCCCGGCTTTGCCCACTGACCAGCCGGGGCAGCCAGCAGTACCGG
GCCTTGACTGTGGCTGAGCTTACCCAGCAGATGTTTGATGCTAAGAACATGATGGCTGCCTGTGACCC
GTCACGGCCGCTACCTAACGGCGGCTGCCATTTTCAGGGTTCGCATGCCCATGAGGGAGGTGGATGAACA
AATGTTCAACATTCAAGATAAGAACAGCAGTACTTTGCTGACTGGCTCCCCAACACGTAACAAACAGCC
GTCTGTGACATCCACCCCGGGGCTAAAATGTCAGCCACCTTCATTGGGAATAATAGGCCATCCAGG
AACTTTCAAGCGTGTCTCAGAGCAGTTTACAGCAATGTTTCAGGCGCAAGGCCTTCTCCACTGGTACAC
GGCGAGGGCATGGATGAGATGGAATTCACCGAGGCCAGAGCAACATGAACGACCTGGTGTCTGAATAT
CAGCAATATCAGGATGCCACGGCCGAGGAGGAGGATGAGGATATGCCGAGGAGGAGGTGGCC

ACGCGTACGCGGCCGCTCGAGCAGAAACTCATCTCAGAAGAGGATCTGGCAGCAATGATATCCTGGATT
ACAAGGATGACGACGATAAGGTTAA



[View online »](#)

Protein Sequence: >RC228299 representing NM_001164154
Red=Cloning site Green=Tags(s)

MDSVRSRSGPFGQVFRPNDFIFGQCGAGNNWAKGHYTEGAELMESVMDVVRKEAESCDCLQGFQLTHSLGGG
 TGSGMGTLTLLSKIREEYPDRIINTFSILPSPKVSDTVVEPYNATLSVHQLIENADETFCIDNEALYDICS
 KTLKLPPTYGDLNHLVSATMSGVTTCLRFPGQLNADLRKLVNMFPPRLHFFMPGFAPLTSRGSQQYR
 ALTVAELTQQMFDAKNMMAACDPRHGRYLTAAAI FRGRMPMPREVDQMFNIQDKNSSYFADWLPNNVKTA
 VCDIPPRGLKMSATFIGNNTAIQELFKRVSEQFTAMFRRKAFLHWYTGEGMDEMEFTEAESNMNDLVSEY
 QQYQDATAEEEEDEEYAEVEVA

TRTRPLEQKLISEEDLAANDILDYKDDDDKV

Chromatograms: https://cdn.origene.com/chromatograms/ja1285_e07.zip

Restriction Sites: SgfI-MluI

Cloning Scheme:



ACCN: NM_001164154

ORF Size: 1116 bp

OTI Disclaimer: The molecular sequence of this clone aligns with the gene accession number as a point of reference only. However, individual transcript sequences of the same gene can differ through naturally occurring variations (e.g. polymorphisms), each with its own valid existence. This clone is substantially in agreement with the reference, but a complete review of all prevailing variants is recommended prior to use. [More info](#)

OTI Annotation: This clone was engineered to express the complete ORF with an expression tag. Expression varies depending on the nature of the gene.

Components: The ORF clone is ion-exchange column purified and shipped in a 2D barcoded Matrix tube containing 10ug of transfection-ready, dried plasmid DNA (reconstitute with 100 ul of water).

Reconstitution Method:

1. Centrifuge at 5,000xg for 5min.
2. Carefully open the tube and add 100ul of sterile water to dissolve the DNA.
3. Close the tube and incubate for 10 minutes at room temperature.
4. Briefly vortex the tube and then do a quick spin (less than 5000xg) to concentrate the liquid at the bottom.
5. Store the suspended plasmid at -20°C. The DNA is stable for at least one year from date of shipping when stored at -20°C.

RefSeq: NM_001164154.1, NP_001157626.1

RefSeq ORF: 1118 bp

Locus ID: 347688

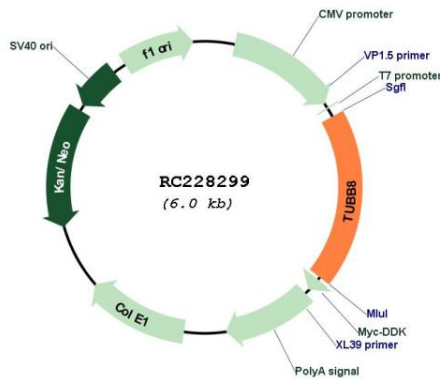
Cytogenetics: 10p15.3

Protein Pathways: Gap junction, Pathogenic Escherichia coli infection

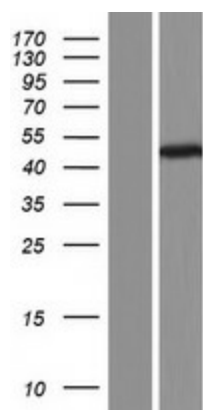
MW: 41.6 kDa

Gene Summary: The protein encoded by this gene represents the primary beta-tubulin subunit of oocytes and the early embryo. Defects in this gene, which is primate-specific, are a cause of oocyte maturation defect 2 and infertility. [provided by RefSeq, Mar 2016]

Product images:



Circular map for RC228299



Western blot validation of overexpression lysate (Cat# [LY431327]) using anti-DDK antibody (Cat# [TA50011-100]). Left: Cell lysates from untransfected HEK293T cells; Right: Cell lysates from HEK293T cells transfected with RC228299 using transfection reagent MegaTran 2.0 (Cat# [TT210002]).