

Product datasheet for RC228298

SH2D2A (NM_001161442) Human Tagged ORF Clone

Product data:

Product Type:	Expression Plasmids
Product Name:	SH2D2A (NM_001161442) Human Tagged ORF Clone
Tag:	Myc-DDK
Symbol:	SH2D2A
Synonyms:	F2771; SCAP; TSAD; VRAP
Mammalian Cell Selection:	Neomycin
Vector:	pCMV6-Entry (PS100001)
E. coli Selection:	Kanamycin (25 ug/mL)
ORF Nucleotide Sequence:	>RC228298 representing NM_001161442 Red=Cloning site Blue=ORF Green=Tags(s)

TTTTGTAATACGACTCACTATAGGGCGCCGGGAATTCGTCGACTGGATCCGGTACCGAGGAGATCTGCC
GCC**CGATCGCC**

ATGTC~~CCCC~~AAAGCACCTTCCAGATCACAGACATGACCCGCAGGAGCTGCCAGAACCTGGGCTACACTGCGG
CATCTCCCAGGCCCGGAGGCTGCCTCCAACACAGGGAATGCTGAGAGGGCAGAGGAGGTGCCTGGAGA
AGGAAGCCTGTTCTGCAGGCCGAGACCCGGGCTTGGTCCAGAAGACCCAGGCCACTGGCTCCTGCAG
CACGGGGCAGCCCTGCCTGGTTCATGGCTTCATCACCCGGAGGGAGGCAGAGAGGCTGCTGGAGCCCA
AGCCTCAGGGGTGCTACTTGGTGCGGTTCAGCGAGAGCGCGGTGACCTTCGTGCTGACTTACAGGAGCCG
GACTTGCTGCCGCACTTCTGCTGGCCAGCTCAGGGACGGGCCACCTGGTGCCTGGGCAGGACAGC
GCCACGCGCGGCTGCAGGACCTGCTGCTGCACTACACCGCGCACCCGCTCAGCCCTACGGGGAGACGC
TCACCGAGCCCTCGCCGACAGACTCCTGAGCCTGCAGGACTTCCCTGAGGACCGAAGAATCAAACCTT
TGGAAGCAAAAGCCAGGACCCAAACCCCAAGTACAGCCCAATCATCAAACAGGGGCAAGCCCAAGTCCCG
ATGCAGAAAGAGGGGGCCGGGAGAGGAGCCCTCCAGCTGCTCAGGCCAAGCCTCCCATCCCGCCA
AACCTCAGCTGCCCCAGAAGTCTACACAATCCCTGTTCCACGACACCCCGCCGCCCCACGCCCAAGCC
CTCCAATCCTATCTACAATGAGCCTGATGAACCATAGCTTTCTATGCCATGGCCGGGGCAGCCCTGGG
GAAGCCCCAGCAACATCTATGTGAAGTGAAGATGAGGGCCTACCCGCCACCTTGGGCACCCCTGTCC
TACGGAAGAGCTGGTCCAGGCTGTCCCAGGAGGCCAGAATACAGGTGGCTCCCAGCTGCATTCTGAGAA
CTCTGTGATTGGCAAGGCCCTCCCTGCCACACAGCCCAACCCGCTGGAGACACACCTCCCCCAC
AATCTTTCTAGACAGGTGCTTCAGGACAGAGGACAGGCATGGTTCCCTTGGCCTCCTCAG

ACGCGTACGCGGCCGCTCGAGCAGAAACTCATCTCAGAAGAGGATCTGGCAGCAATGATATCCTGGATT
ACAAGGATGACGACGATAAGGTTAA



[View online »](#)

Protein Sequence: >RC228298 representing NM_001161442
Red=Cloning site Green=Tags(s)

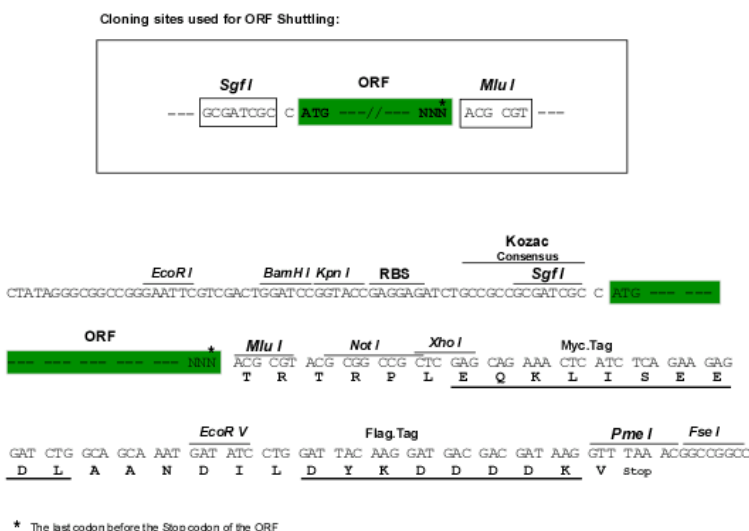
MSPSTFQITDMTRRSCQNLGYTAASPAPEAASNTGNAERAEVPGEGSLFLQAETRAWFQKTQAHWLLQ
 HGAAPAWFHGFI TRREAERLLEPKPQGCYL VRFSESAVTFVLTYRSRTCCRHFLLAQLRDGRHVVLGEDS
 AHARLQDLLLHYTAHPLSPYGETLTEPLARQTPPEAGLSLRTEESNFGSKSQDPNPQYSPIIKQGQAPVP
 MQKEGAGEKEPSQLLRPKPPIPAKPQLPPEVYTI PVPRHRPAPRPKPSNP IYNEPDEPIAFYAMGRGSPG
 EAPSNIYVEVEDEGLPATLGHPVLRKSWSRPVPGGQNTGGSQLHSENSVIGQGPPLPHQPPPAWRHTLPH
 NLSRQVLQDRGQAWLPLGPPQ

TRTRPLEQKLISEEDLAANDILDYKDDDDKV

Chromatograms: https://cdn.origene.com/chromatograms/mk8055_c12.zip

Restriction Sites: SgfI-MluI

Cloning Scheme:



* The last codon before the Stop codon of the ORF

ACCN: NM_001161442

ORF Size: 1113 bp

OTI Disclaimer: The molecular sequence of this clone aligns with the gene accession number as a point of reference only. However, individual transcript sequences of the same gene can differ through naturally occurring variations (e.g. polymorphisms), each with its own valid existence. This clone is substantially in agreement with the reference, but a complete review of all prevailing variants is recommended prior to use. [More info](#)

OTI Annotation: This clone was engineered to express the complete ORF with an expression tag. Expression varies depending on the nature of the gene.

Components: The ORF clone is ion-exchange column purified and shipped in a 2D barcoded Matrix tube containing 10ug of transfection-ready, dried plasmid DNA (reconstitute with 100 ul of water).

Reconstitution Method:

1. Centrifuge at 5,000xg for 5min.
2. Carefully open the tube and add 100ul of sterile water to dissolve the DNA.
3. Close the tube and incubate for 10 minutes at room temperature.
4. Briefly vortex the tube and then do a quick spin (less than 5000xg) to concentrate the liquid at the bottom.
5. Store the suspended plasmid at -20°C. The DNA is stable for at least one year from date of shipping when stored at -20°C.

RefSeq: [NM_001161442.2](#)

RefSeq ORF: 1116 bp

Locus ID: 9047

UniProt ID: [Q9NP31](#)

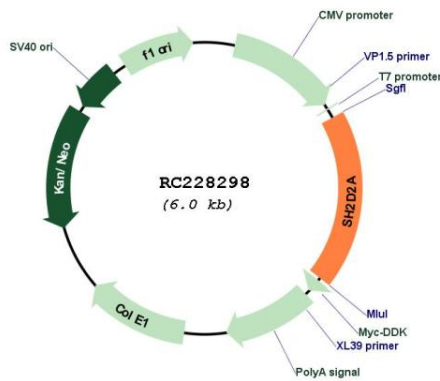
Cytogenetics: 1q23.1

Protein Pathways: VEGF signaling pathway

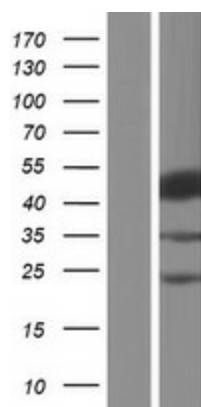
MW: 40.8 kDa

Gene Summary: This gene encodes an adaptor protein thought to function in T-cell signal transduction. A related protein in mouse is responsible for the activation of lymphocyte-specific protein-tyrosine kinase and functions in downstream signaling. Alternative splicing results in multiple transcript variants. [provided by RefSeq, Mar 2010]

Product images:



Circular map for RC228298



Western blot validation of overexpression lysate (Cat# [LY431326]) using anti-DDK antibody (Cat# [TA50011-100]). Left: Cell lysates from untransfected HEK293T cells; Right: Cell lysates from HEK293T cells transfected with RC228298 using transfection reagent MegaTran 2.0 (Cat# [TT210002]).