

## Product datasheet for RC228295

### GPR17 (NM\_001161415) Human Tagged ORF Clone

#### Product data:

Product Type:	Expression Plasmids
Product Name:	GPR17 (NM_001161415) Human Tagged ORF Clone
Tag:	Myc-DDK
Symbol:	GPR17
Mammalian Cell Selection:	Neomycin
Vector:	pCMV6-Entry (PS100001)
E. coli Selection:	Kanamycin (25 ug/mL)
ORF Nucleotide Sequence:	>RC228295 representing NM_001161415 Red=Cloning site Blue=ORF Green=Tags(s)

TTTTGTAATACGACTCACTATAGGGCGGCCGGAATTCGTCGACTGGATCCGGTACCGAGGAGATCTGCC  
GCC**CGATCGCC**

ATGTCCAAACGGAGTTGGTGGGCTGGATCCAGAAAGCCCCAAGAGAGATGCTGAAACTCTCAGGCTCTG  
ACTCCAGCCAAAGCATGAATGGCCTTGAAGTGGCTCCCCAGGTCTGATCACCAACTTCTCCCTGGCCAC  
GGCAGAGCAATGTGGCCAGGAGACGCCACTGGAGAACAATGCTGTTTCGCTCCTTCTACCTTCTGGATTTT  
ATCCTGGCTTTAGTTGGCAATACCCTGGCTCTGTGGCTTTTCATCCGAGACCACAAGTCCGGGACCCCGG  
CCAACGTGTTCTGATGCATCTGGCCGTGGCCGACTTGTGCTGCGTCTGGTCTGCCACCCGCTGGT  
CTACCACTTCTCTGGGAACCACTGGCCATTTGGGAAATCGCATGCCGTCTCACCAGCTTCTCTTCTAC  
CTCAACATGTACGCCAGCATCTACTTCCCTCACCTGCATCAGCGCCGACCGTTTCTGGCCATTGTGCACC  
CGGTCAAGTCCCTCAAGCTCCGAGGCCCTCTACGCACACCTGGCTGTGCCTTCTGTGGGTGGTGGT  
GGCTGTGGCCATGGCCCCGCTGCTGGTGGAGCCACAGACCGTGCAGACCAACCACACGGTGGTCTGCCTG  
CAGCTGTACCGGAGAGGCTCCACCATGCCCTGGTGTCCCTGGCAGTGGCTTACCTTCCCCTTCA  
TCACCACGGTACCTGCTACCTGCTGATCATCCGAGCCTGCGGACGGGCTGCGTGTGGAGAAGCGCT  
CAAGACCAAGGCAGTGCATGATCGCCATAGTGTGGCCATCTCTGGTCTGCTTCTGTCCTACCAC  
GTCAACCGCTCCGTCTACGTGCTGCACTACCGAGCCATGGGGCTCCTGCGCCACCCAGCGCATCTGG  
CCCTGGCAAACCGCATCACCTCCTGCCTACCAGCCTCAACGGGGCACTCGACCCATCATGTATTTCTT  
CGTGGCTGAGAAGTTCGCCACGCCCTGTGCAACTTGCTCTGTGGCAAAAGGCTCAAGGGCCCGCCCC  
AGCTTCGAAGGAAAACCAACGAGAGCTCGCTGAGTGCCAAGTCAGAGCTG

**ACGCGT**ACGCGGCCGCTCGAGCAGAACTCATCTCAGAAGAGGATCTGGCAGCAAATGATATCCTGGATT  
ACAAGGATGACGACGATAAGGTTTAA



[View online »](#)

**Protein Sequence:** >RC228295 representing NM\_001161415  
Red=Cloning site Green=Tags(s)

MSKR<sup>+</sup>SWAGSRKPPREMLKLSGSDSSQSMNGLEVAPPGLITN<sup>+</sup>FLATAEQCGQETPLENMLFASFYLLDF  
 ILALVGNTLALWLFIRDHKSGTPANVFLMHLAVADLSCV<sup>+</sup>LVLPTLVYHFSGNHWPFGFIACRLTGFLFY  
 LNMYSIYFLTCISADRFLAIVHPVKSLKLRPLYAHLACAFLWVVAVAMAPLLVSPQTVQTNHTVVCL  
 QLYREKASHHALVSLAVAF<sup>+</sup>TFPFI<sup>+</sup>TTVTCYLLIIRSLRQGLRVEKRLKTKAVRMI<sup>+</sup>AIVLAI<sup>+</sup>FLVCFVPYH  
 VNRSVYVLHYRSHGASCATQRILALANRITSCLTSLNGALDPIMYFFVAEKFRHALCNLLCGKRLK<sup>+</sup>GPPP  
 SFEGKTNESSLSAKSEL

TRTRPLE<sup>+</sup>QKLI<sup>+</sup>SEEDLAANDILDYK<sup>+</sup>DDDDK<sup>+</sup>V

**Chromatograms:** [https://cdn.origene.com/chromatograms/mk8007\\_a03.zip](https://cdn.origene.com/chromatograms/mk8007_a03.zip)

**Restriction Sites:** Sgfl-MluI

**Cloning Scheme:**

Cloning sites used for ORF Shuttling:



\* The last codon before the Stop codon of the ORF

**ACCN:** NM\_001161415

**ORF Size:** 1101 bp

**OTI Disclaimer:** The molecular sequence of this clone aligns with the gene accession number as a point of reference only. However, individual transcript sequences of the same gene can differ through naturally occurring variations (e.g. polymorphisms), each with its own valid existence. This clone is substantially in agreement with the reference, but a complete review of all prevailing variants is recommended prior to use. [More info](#)

**OTI Annotation:** This clone was engineered to express the complete ORF with an expression tag. Expression varies depending on the nature of the gene.

**Components:** The ORF clone is ion-exchange column purified and shipped in a 2D barcoded Matrix tube containing 10ug of transfection-ready, dried plasmid DNA (reconstitute with 100 ul of water).

**Reconstitution Method:**

1. Centrifuge at 5,000xg for 5min.
2. Carefully open the tube and add 100ul of sterile water to dissolve the DNA.
3. Close the tube and incubate for 10 minutes at room temperature.
4. Briefly vortex the tube and then do a quick spin (less than 5000xg) to concentrate the liquid at the bottom.
5. Store the suspended plasmid at -20°C. The DNA is stable for at least one year from date of shipping when stored at -20°C.

**RefSeq:** [NM\\_001161415.1](#), [NP\\_001154887.1](#)

**RefSeq ORF:** 1104 bp

**Locus ID:** 2840

**UniProt ID:** [Q13304](#)

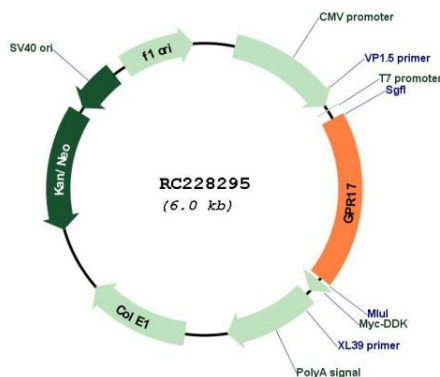
**Cytogenetics:** 2q14.3

**Protein Families:** Druggable Genome, GPCR, Transmembrane

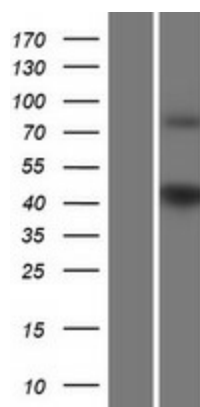
**MW:** 40.8 kDa

**Gene Summary:** Dual specificity receptor for uracil nucleotides and cysteinyl leukotrienes (CysLTs). Signals through G(i) and inhibition of adenylyl cyclase. May mediate brain damage by nucleotides and CysLTs following ischemia.[UniProtKB/Swiss-Prot Function]

**Product images:**



Circular map for RC228295



Western blot validation of overexpression lysate (Cat# [LY431323]) using anti-DDK antibody (Cat# [TA50011-100]). Left: Cell lysates from untransfected HEK293T cells; Right: Cell lysates from HEK293T cells transfected with RC228295 using transfection reagent MegaTran 2.0 (Cat# [TT210002]).