

## Product datasheet for RC228292

### EBNA1 binding protein 2 (EBNA1BP2) (NM\_001159936) Human Tagged ORF Clone

#### Product data:

Product Type:	Expression Plasmids
Product Name:	EBNA1 binding protein 2 (EBNA1BP2) (NM_001159936) Human Tagged ORF Clone
Tag:	Myc-DDK
Symbol:	EBNA1 binding protein 2
Synonyms:	EBP2; NOBP; P40
Mammalian Cell Selection:	Neomycin
Vector:	pCMV6-Entry (PS100001)
E. coli Selection:	Kanamycin (25 ug/mL)
ORF Nucleotide Sequence:	>RC228292 representing NM_001159936 Red=Cloning site Blue=ORF Green=Tags(s)

TTTTGTAATACGACTCACTATAGGGCGGCCGGAATTCGTCGACTGGATCCGGTACCGAGGAGATCTGCC  
GCC**CGATCGCC**

ATGTATCCAGAGGCGCTACCTGTAGGGATCCTAAGCAACCCGGACACTTTCAAACGCCGTAGCGTTCTCT  
ATAGCAACGACAAACCGAAGTATGGTTTGCCGCCGGAAGCGGAAGTCCCAATCAAAAGTTGAGCAGTAG  
CTGTGTGGGACGTGCGTGC GGCGAGATGGACACTCCCCGCTCTCGGATTCGGAGTCGGAATCCGATGAA  
TCCCTTGTACAGACAGAGAGTTGCAGGATGCGTTTTCCCGAGGGCTTCTGAAGCCAGGCCTCAATGTCC  
TGCTAGAGGGGCCGAAGAAGGCCGTGAACGACGTGAATGGCCTGAAGCAATGTTTGGCAGAATTC AAGCG  
GGATCTGGAATGGTTGAAAGGCTCGATGTGACTGGTCCGGTACCGGAGATCGGTGGATCTGAGGCC  
CCAGCACCTCAGAACAAGGACCAGAAAGCTGTTGATCCAGAAGACGACTTCCAGCGAGAGATGAGTTTCT  
ATCGCCAAGCCCAGGCCGAGTGTGAGTCTTACCCCGCTCCATCAGCTCAAAGTCCCTACGAAGCG  
ACCCACTGATTATTTGCGGAAATGGCCAAATCTGATCTGCAGATGCAGAAGATTCGACAGAAGCTGCAG  
ACTAAACAGGCTGCCATGGAGAGGTCTGAAAAGCTAAGCAACTGCGAGCACTTAGGAAATACGGGAAGA  
AGGTGCAAACGGAGGTTCTTCAGAAGAGGCAGCAGGAGAAAGCCCATATGATGAATGCTATTAAGAAATA  
TCAGAAAGGCTTCTCTGATAAACTGGATTTCTTGAGGGAGATCAGAAACCTCTGGCACAGCGCAAGAAG  
GCAGGACCAAAGGCCAGCAGATGAGGAAGGGGCCAGTGTAAACGACGGTATAAAACCCAGAAGTTTG  
GTTTTGGTGGAAAGAAGAAAGGCTCAAAGTGGAACTCGGAGAGCTATGATGATGTATCTAGCTTCCG  
GGCCAAGACAGCTCATGGCAGAGGCCTCAAGAGGCTGGCAAGAAAGGTCAAAT AAGAGACCTGAAAA  
CGAAACAAGAGAGAAGATGAAGAACAGACACAC

**ACGCGT**ACGCGGCCGCTCGAGCAGAACTCATCTCAGAAGAGGATCTGGCAGCAATGATATCCTGGATT  
ACAAGGATGACGACGATAAGGTTAA



[View online »](#)

**Protein Sequence:** >RC228292 representing NM\_001159936  
Red=Cloning site Green=Tags(s)

MYPEALPVGILSNPDTFKRRSGSYSNDKPEVWFAAGSGSPNQKLSSSCVGRACGEMDTPPLSDSESESEDE  
 SLVTDRELQDAFSRGLLKPGLNVVLEGPKA VNDVNGLKQCLAEFKRDLEWVERLDVTLGPVPEIGGSEA  
 PAPQNKDQKAVDPEDDFQREMSFYRQAQAAVLAVL PRLHQLKVP TKRPTDYFAEMAKSDLQMOKIRQKLQ  
 TKQAAMERSEKAKQLRALRKYGKKVQTEVLQKRQEKAHMMNAIKKYQKGFSDKLDLFLEGDQKPLAQRKK  
 AGAKGQQMRKGPSAKRRYKNQKFGFGGKKKGSKWNTRESYDDVSSFRAKTAHGRGLKRP GKKGSNKRP GK  
 RTREKMKNRTH

TRTRPLEQKLISEEDLAANDILDYKDDDDKV

**Chromatograms:** [https://cdn.origene.com/chromatograms/mk8054\\_g08.zip](https://cdn.origene.com/chromatograms/mk8054_g08.zip)

**Restriction Sites:** SgfI-MluI

**Cloning Scheme:**



\* The last codon before the Stop codon of the ORF

**ACCN:** NM\_001159936

**ORF Size:** 1083 bp

**OTI Disclaimer:** The molecular sequence of this clone aligns with the gene accession number as a point of reference only. However, individual transcript sequences of the same gene can differ through naturally occurring variations (e.g. polymorphisms), each with its own valid existence. This clone is substantially in agreement with the reference, but a complete review of all prevailing variants is recommended prior to use. [More info](#)

**OTI Annotation:** This clone was engineered to express the complete ORF with an expression tag. Expression varies depending on the nature of the gene.

**Components:** The ORF clone is ion-exchange column purified and shipped in a 2D barcoded Matrix tube containing 10ug of transfection-ready, dried plasmid DNA (reconstitute with 100 ul of water).

**Reconstitution Method:**

1. Centrifuge at 5,000xg for 5min.
2. Carefully open the tube and add 100ul of sterile water to dissolve the DNA.
3. Close the tube and incubate for 10 minutes at room temperature.
4. Briefly vortex the tube and then do a quick spin (less than 5000xg) to concentrate the liquid at the bottom.
5. Store the suspended plasmid at -20°C. The DNA is stable for at least one year from date of shipping when stored at -20°C.

**RefSeq:** [NM\\_001159936.1](#), [NP\\_001153408.1](#)

**RefSeq ORF:** 1086 bp

**Locus ID:** 10969

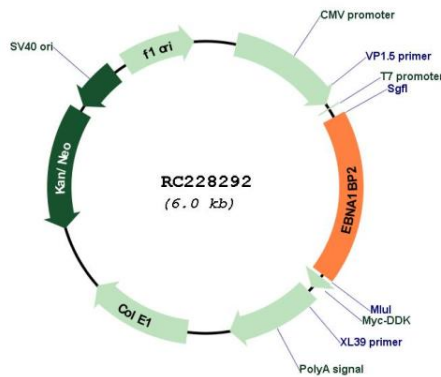
**UniProt ID:** [Q99848](#)

**Cytogenetics:** 1p34.2

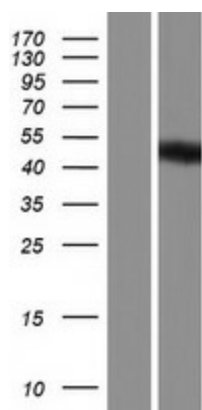
**MW:** 40.5 kDa

**Gene Summary:** Required for the processing of the 27S pre-rRNA.[UniProtKB/Swiss-Prot Function]

### Product images:



Circular map for RC228292



Western blot validation of overexpression lysate (Cat# [LY431320]) using anti-DDK antibody (Cat# [TA50011-100]). Left: Cell lysates from untransfected HEK293T cells; Right: Cell lysates from HEK293T cells transfected with RC228292 using transfection reagent MegaTran 2.0 (Cat# [TT210002]).