

Product datasheet for RC228290

GDNF Receptor alpha 2 (GFRA2) (NM_001165038) Human Tagged ORF Clone

Product data:

Product Type:	Expression Plasmids
Product Name:	GDNF Receptor alpha 2 (GFRA2) (NM_001165038) Human Tagged ORF Clone
Tag:	Myc-DDK
Symbol:	GDNF Receptor alpha 2
Synonyms:	GDNFRB; NRTNR-ALPHA; NTNRA; RETL2; TRNR2
Mammalian Cell Selection:	Neomycin
Vector:	pCMV6-Entry (PS100001)
E. coli Selection:	Kanamycin (25 ug/mL)
ORF Nucleotide Sequence:	>RC228290 representing NM_001165038 Red=Cloning site Blue=ORF Green=Tags(s)

TTTTGTAATACGACTCACTATAGGGCGCCGGGAATTCGTCGACTGGATCCGGTACCGAGGAGATCTGCC
GCC**CGATCGCC**

ATGATCTTGGCAAACGTCTTCTGCCTCTTCTTTCTAGGTGAGGAGTTCTACGAAGCCTCCCCATG
AGCCGGTGACCTCCGCCTCTCGGACATCTTCAGGCTTGCTTCAATCTTCTCAGGGACAGGGGCAGACCC
GGTGGTCAGCGCAAGAGCAACCATTGCCTGGATGCTGCCAAGGCCTGCAACCTGAATGACAACCTGCAAG
AAGCTGCGCTCCTCTACATCTCCATCTGCAACCGGAGATCTCGCCACCGAGCGCTGCAACCGCCGA
AGTGCCACAAGGCCCTGCGCCAGTTCTCGACCGGTGCCAGCGAGTACACCTACCGCATGCTCTTCTG
CTCCTGCCAAGACCAGGGTGCCTGAGCGCCGCGGAAACCATCCTGCCAGCTGCTCCTATGAGGAC
AAGGAGAAGCCAACTGCCTGGACCTGCGTGGCGTGTGCCGACTGACCACCTGTGTCGGTCCCGGCTGG
CCGACTTCCATGCCAATTGTGCGAGCCTCTACCAGACGGTACCAGCTGCCCTGCCGACAATTACCAGGC
GTGTCTGGGCTCTTATGCTGGCATGATTGGGTTTGACATGACACCTAACTATGTGGACTCCAGCCCCACT
GGCATCGTGGTGTCCCCCTGGTGCAGCTGTCGTGGCAGCGGAACATGGAGGAGGAGTGTGAGAAGTTCC
TCAGGGACTTCACCGAGAACCCATGCCTCCGGAACGCCATCCAGGCCCTTGGCAACGGCACGGACGTGAA
CGTGTCCCCAAAAGGCCCTCGTTCCAGGCCACCCAGGCCCTCGGGTGGAGAAGACGCCTTCTTTGCCA
GATGACCTCAGTGACAGTACCAGCTTGGGACCAGTGTGTCATACCACCTGCACGCTGTCCAGGACAGG
GGCTGAAGGCCAACTCCAAAGAGTTAAGCATGTGCTTACAGAGCTCACGACAAATATCATCCAGG
GAGTAACAAGGTGATCAACCTAACTCAGGCCCCAGCAGACCCAGACCGTCCGGCTGCCTTGACCGTGCTG
TCTGCTCTGATGCTGAACTGGCCTTG

ACGCGTACGCGGCCGCTCGAGCAGAAACTCATCTCAGAAGAGGATCTGGCAGCAAATGATATCCTGGATT
ACAAGGATGACGACGATAAGGTTAA



[View online »](#)

- Reconstitution Method:**
1. Centrifuge at 5,000xg for 5min.
 2. Carefully open the tube and add 100ul of sterile water to dissolve the DNA.
 3. Close the tube and incubate for 10 minutes at room temperature.
 4. Briefly vortex the tube and then do a quick spin (less than 5000xg) to concentrate the liquid at the bottom.
 5. Store the suspended plasmid at -20°C. The DNA is stable for at least one year from date of shipping when stored at -20°C.

RefSeq: [NM_001165038.2](#)

RefSeq ORF: 1080 bp

Locus ID: 2675

UniProt ID: [O00451](#)

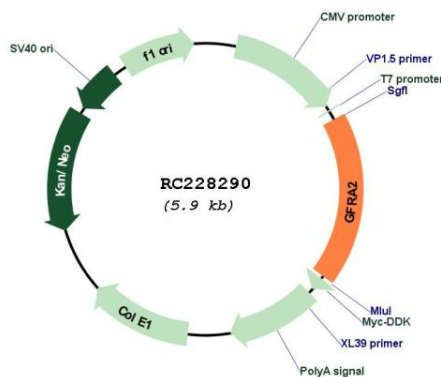
Cytogenetics: 8p21.3

Protein Families: Druggable Genome

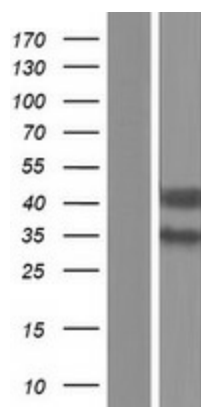
MW: 39.5 kDa

Gene Summary: Glial cell line-derived neurotrophic factor (GDNF) and neurturin (NTN) are two structurally related, potent neurotrophic factors that play key roles in the control of neuron survival and differentiation. The protein encoded by this gene is a member of the GDNF receptor family. It is a glycosylphosphatidylinositol(GPI)-linked cell surface receptor for both GDNF and NTN, and mediates activation of the RET tyrosine kinase receptor. This encoded protein acts preferentially as a receptor for NTN compared to its other family member, GDNF family receptor alpha 1. This gene is a candidate gene for RET-associated diseases. Multiple transcript variants encoding different isoforms have been found for this gene. [provided by RefSeq, Sep 2009]

Product images:



Circular map for RC228290



Western blot validation of overexpression lysate (Cat# [LY431318]) using anti-DDK antibody (Cat# [TA50011-100]). Left: Cell lysates from untransfected HEK293T cells; Right: Cell lysates from HEK293T cells transfected with RC228290 using transfection reagent MegaTran 2.0 (Cat# [TT210002]).