

Product datasheet for RC228287

Leukotriene B4 Receptor 2 (LTB4R2) (NM_001164692) Human Tagged ORF Clone

Product data:

Product Type:	Expression Plasmids
Product Name:	Leukotriene B4 Receptor 2 (LTB4R2) (NM_001164692) Human Tagged ORF Clone
Tag:	Myc-DDK
Symbol:	Leukotriene B4 Receptor 2
Synonyms:	BLT2; BLTR2; JULF2; KPG_004; LTB4-R 2; LTB4-R2; NOP9
Mammalian Cell Selection:	Neomycin
Vector:	pCMV6-Entry (PS100001)
E. coli Selection:	Kanamycin (25 ug/mL)
ORF Nucleotide Sequence:	>RC228287 representing NM_001164692 Red=Cloning site Blue=ORF Green=Tags(s)

TTTTGTAATACGACTCACTATAGGGCGGCCGGAATTCGTCGACTGGATCCGGTACCGAGGAGATCTGCC
GCC**CGATCGCC**

ATGTCGGTCTGCTACCGTCCCCAGGGAACGAGACACTGCTGAGCTGGAAGACTTCGCGGGCCACAGGCA
CAGCCTTCTGCTGCTGGCGGCGCTGCTGGGGTGCTGGCAGCGGCTTCGTGGTGTGGAGCTTGGCGGG
CTGGCGGCTGCACGGGGGCGACCGCTGGCGGCCACGCTTGTGCTGCACCTGGCGCTGGCCGACGGCGCG
GTGCTGCTGCTCACGCCCTCTTTGTGGCCTTCTGACCCGGCAGGCCTGGCCGCTGGCCAGGCGGGCT
GCAAGGCGGTGTACTACGTGTGCGCGCTCAGCATGTACGCCAGCGTGCTGCTCACGGCCTGCTCAGCCT
GCAGCGCTGCCTCGCAGTCAACCGCCCTTCTGGCGCCTCGGCTGCGCAGCCCGGCCCTGGCCCGCCGC
CTGCTGCTGGCGGTCTGGCTGGCCGCCCTGTTGCTCGCCGTCCCGGCCGCGCTTACCGCCACCTGTGGA
GGGACCGCGTATGCCAGCTGTGCCACCCGTGCGCGGTCCACGCCCGCCACCTGAGCCTGGAGACTCT
GACCGCTTTCGTGCTTCTTTGGGCTGATGCTCGGCTGTACAGCGTGACGCTGGCAGCGCTGCGGGGC
GCCCCTGGGGCTCCGGGCGGCACGGGGCGCGGTGGGCCGGCTGGTGGAGCGCATCGTGCTTGCCTTCG
GCTTGTCTGGGCCCCCTACCACGAGTCAACCTTCTGCAGGCGGTGCGAGCGCTGGCTCCACCGGAAGG
GGCCTTGGCGAAGCTGGGCGGAGCCGGCCAGGCGGCGGAGCGGGAACACGGCCTTGGCCTTCTCAGT
TCTAGCGTCAACCGGTGCTTACGTCTTACCGCTGGAGATCTGCTGCCCGGGCAGGTCGCCGTTTCC
TACGCGGCTCTTGAAGGCTCTGGGGAGGCCGAGGGGGCGGCCGCTTAGGGAAGGGACCATGGAGCT
CCGAACTACCCCTCAGCTGAAAGTGGTGGGCAGGGCCGCGCAATGGAGACCCGGGGGTGGATGGAG
AAGGACGGTCCGGAATGGGACCTT

ACGCGTACGCGGCCGCTCGAGCAGAAACTCATCTCAGAAGAGGATCTGGCAGCAAATGATATCCTGGATT
ACAAGGATGACGACGATAAGGTTAA



[View online »](#)

Protein Sequence: >RC228287 representing NM_001164692
Red=Cloning site Green=Tags(s)

MSVCYRPPGNETLLSWKTSRATGTAFLLLAALLGLPGSGFVVWSLAGWRPARGRPLAATLVLHLALADGA
 VLLL TPLFVAFLTRQAWPLGQAGCKAVYYVCALSMYASVLLTGLLSLQRCLAVTRPFLAPRLRSPALARR
 LLLAVWLAALLLAVPAAVYRHLWRDRVCQLCHPSPVHAAAHL SLETLTAFVLPFGLMLGCYSVTLARLRG
 ARWGSGRHGARGRLVSAIVLAFGLLWAPYHAVNLLQAVAALAPPEGALAKLGGAGQAARAGTTALAFFS
 SSVNPVLYVFTAGDLLPRAGPRFLTRLFEQSGEARGGGRSREGTMELRTTPQLKVVGQGRNGDPGGGME
 KDGPEWDL

TRTRPLEQKLISEEDLAANDILDYKDDDDKV

Chromatograms: https://cdn.origene.com/chromatograms/mg3903_a05.zip

Restriction Sites: SgfI-MluI

Cloning Scheme:



ACCN: NM_001164692

ORF Size: 1074 bp

OTI Disclaimer: The molecular sequence of this clone aligns with the gene accession number as a point of reference only. However, individual transcript sequences of the same gene can differ through naturally occurring variations (e.g. polymorphisms), each with its own valid existence. This clone is substantially in agreement with the reference, but a complete review of all prevailing variants is recommended prior to use. [More info](#)

OTI Annotation: This clone was engineered to express the complete ORF with an expression tag. Expression varies depending on the nature of the gene.

Components: The ORF clone is ion-exchange column purified and shipped in a 2D barcoded Matrix tube containing 10ug of transfection-ready, dried plasmid DNA (reconstitute with 100 ul of water).

Reconstitution Method:

1. Centrifuge at 5,000xg for 5min.
2. Carefully open the tube and add 100ul of sterile water to dissolve the DNA.
3. Close the tube and incubate for 10 minutes at room temperature.
4. Briefly vortex the tube and then do a quick spin (less than 5000xg) to concentrate the liquid at the bottom.
5. Store the suspended plasmid at -20°C. The DNA is stable for at least one year from date of shipping when stored at -20°C.

RefSeq: [NM_001164692.2](#), [NP_001158164.1](#)

RefSeq ORF: 1077 bp

Locus ID: 56413

UniProt ID: [Q9NPC1](#)

Cytogenetics: 14q12

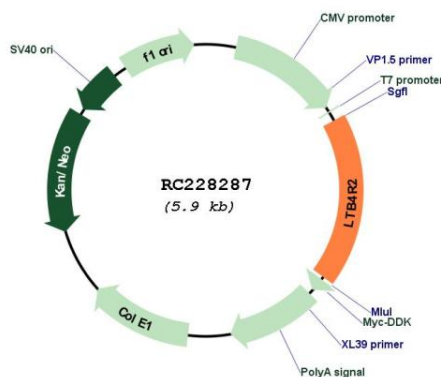
Protein Families: Druggable Genome, GPCR, Transmembrane

Protein Pathways: Calcium signaling pathway, Neuroactive ligand-receptor interaction

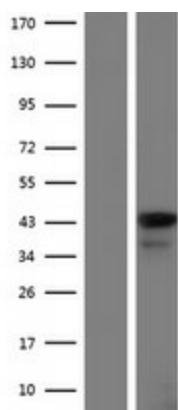
MW: 37.8 kDa

Gene Summary: Low-affinity receptor for leukotrienes including leukotriene B4. Mediates chemotaxis of granulocytes and macrophages. The response is mediated via G-proteins that activate a phosphatidylinositol-calcium second messenger system. The rank order of affinities for the leukotrienes is LTB4 > 12-epi-LTB4 > LTB5 > LTB3.[UniProtKB/Swiss-Prot Function]

Product images:



Circular map for RC228287



Western blot validation of overexpression lysate (Cat# [LY431315]) using anti-DDK antibody (Cat# [TA50011-100]). Left: Cell lysates from untransfected HEK293T cells; Right: Cell lysates from HEK293T cells transfected with RC228287 using transfection reagent MegaTran 2.0 (Cat# [TT210002]).