

Product datasheet for RC228284

Z DNA binding protein (ZBP1) (NM_001160418) Human Tagged ORF Clone

Product data:

Product Type:	Expression Plasmids
Product Name:	Z DNA binding protein (ZBP1) (NM_001160418) Human Tagged ORF Clone
Tag:	Myc-DDK
Symbol:	Z DNA binding protein
Synonyms:	C20orf183; DAI; DLM-1; DLM1
Mammalian Cell Selection:	Neomycin
Vector:	pCMV6-Entry (PS100001)
E. coli Selection:	Kanamycin (25 ug/mL)
ORF Nucleotide Sequence:	>RC228284 representing NM_001160418 Red=Cloning site Blue=ORF Green=Tags(s)

TTTTGTAATACGACTCACTATAGGGCGGCCGGAATTCGTCGACTGGATCCGGTACCGAGGAGATCTGCC
GCC**CGATCGCC**

ATGGCCAGGCTCCTGCTGACCCGGCAGAGAAGCCGAGAGGCCCCAGCAACATGCAGCTACAATCCAG
AGACCCCTGGCCCTCAGTTCAGCCAACAACGGGAGGAAGACATCTACAGGTTTCTCAAAGACAATGGTCC
CCAGAGGGCCCTGGTCATCGCCAAGCACTGGGAATGAGGACAGCAAAAGATGTGAACCGAGACTTGAC
AGGATGAAGAGCAGGCACCTTCTGGACATGGATGAGCAGTCCAAAGCATGGACGATTTACCGCCAGAAG
ATTCTGGAAGAAGAGCAAAGTCAGCCTCAATTATTTACCAGCACAATCCAATCAACATGATCTGCCAGAA
TGGACCCAACAGCTGGATTTCCATTGCAAACCTCCGAAGCCATCCAGATTGGACACGGGAACATCATTACA
AGACAGACAGTCTCCAGGGAGGACGGTTCGCCGGTCCACGCCACCTCCCTTCAATGGCACCAGGTGATT
CCTCAACTTGGGGACCCCTAGTTGATCCCTGGGGCCCCAGGACATCCACATGGAGCAGTCCATACTGAG
ACGGGTGCAGCTGGGACACAGCAATGAGATGAGGCTCCACGGCGTCCCGTCCGAGGGCCCTGCCACATC
CCCCCTGGCAGCCCCCAGTCTCTGCCACTGCTGCCGGCCAGAAGCTTCGTTTGAAGCAAGAATCCCA
GTCCAGGAATCACCTGAGGGGAAGCCGCCAGAGAATCCACATGAAATCGTGCTTTCTCGAGGACGC
CACCATCGGCAACAGCAACAAAATGTCTATCAGCCCAGGGGTGGCTGGCCAGGAGGAGTCGAGGGTCT
GGAGAGGGGGAGCCAGGGGAGGACGCAAGTCTGCTCCCGCAGACACAAATCCAGAAGTCACTTTCCCTC
GAGACATTGGTCAGCCCATCACTCCAGCCACTCGAAGCTCACCCCAAGCTGGAAGTCACTTTGG
AAACAGGAGTCACAAAGCTGCAGAAGGCAGCCACTATGTGGATGAAGCCTCACACGAGGGGAGCTGGTGG
GGAGGTGGGATT

ACGCGTACGCGGCCGCTCGAGCAGAAACTCATCTCAGAAGAGGATCTGGCAGCAATGATATCCTGGATT
ACAAGGATGACGACGATAAGGTTAA



[View online »](#)

Protein Sequence: >RC228284 representing NM_001160418
Red=Cloning site Green=Tags(s)

MAQAPADPGREAERPQQHAATIPETPGPQFSQQREEDIYRFLKDNGPQRALVIAQALGMRTAKDVNRDLY
 RMKSRHLLDMDEQSKAWTIYRPEDSGRRAKSASIIYQHNPINMICQNGPNSWISIANSEAIQIGHGNIIT
 RQTVSREDGSGAPRHLPSMAPGDSSTWGLVDPWGPQDIHMEQSILRRVQLGHSNEMRLHGVPSSEPAHI
 PPGSPPVSATAAGPEASFEARIPSPGTHPEGEAAQRIHMKSCFLEDATIGNSNKMSISPGVAGPGGVAGS
 GEGEPGEDAGRRPADTQSRSHFPRDIGQPITPSHKLTPKLETMTLGNRSHKAAEGSHYVDEASHEGSSW
 GGGI

TRTRPLEQKLISEEDLAANDILDYKDDDDKV

Chromatograms: https://cdn.origene.com/chromatograms/mk8054_a06.zip

Restriction Sites: SgfI-MluI

Cloning Scheme:



ACCN: NM_001160418

ORF Size: 1062 bp

OTI Disclaimer: The molecular sequence of this clone aligns with the gene accession number as a point of reference only. However, individual transcript sequences of the same gene can differ through naturally occurring variations (e.g. polymorphisms), each with its own valid existence. This clone is substantially in agreement with the reference, but a complete review of all prevailing variants is recommended prior to use. [More info](#)

OTI Annotation: This clone was engineered to express the complete ORF with an expression tag. Expression varies depending on the nature of the gene.

Components: The ORF clone is ion-exchange column purified and shipped in a 2D barcoded Matrix tube containing 10ug of transfection-ready, dried plasmid DNA (reconstitute with 100 ul of water).

Reconstitution Method:

1. Centrifuge at 5,000xg for 5min.
2. Carefully open the tube and add 100ul of sterile water to dissolve the DNA.
3. Close the tube and incubate for 10 minutes at room temperature.
4. Briefly vortex the tube and then do a quick spin (less than 5000xg) to concentrate the liquid at the bottom.
5. Store the suspended plasmid at -20°C. The DNA is stable for at least one year from date of shipping when stored at -20°C.

RefSeq: [NM_001160418.2](#)

RefSeq ORF: 1065 bp

Locus ID: 81030

UniProt ID: [Q9H171](#)

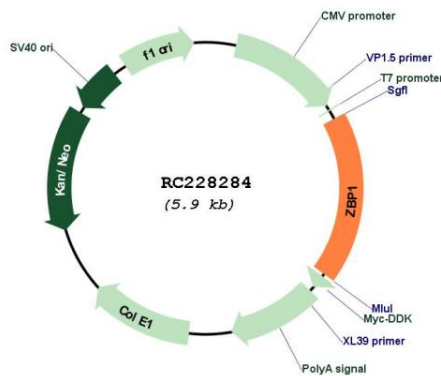
Cytogenetics: 20q13.31

Protein Pathways: Cytosolic DNA-sensing pathway

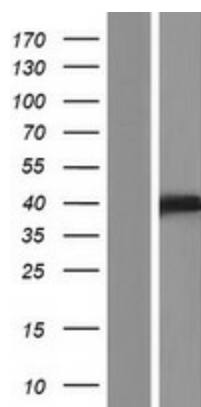
MW: 38 kDa

Gene Summary: This gene encodes a Z-DNA binding protein. The encoded protein plays a role in the innate immune response by binding to foreign DNA and inducing type-I interferon production. Alternatively spliced transcript variants encoding multiple isoforms have been observed for this gene. [provided by RefSeq, Dec 2011]

Product images:



Circular map for RC228284



Western blot validation of overexpression lysate (Cat# [LY431312]) using anti-DDK antibody (Cat# [TA50011-100]). Left: Cell lysates from untransfected HEK293T cells; Right: Cell lysates from HEK293T cells transfected with RC228284 using transfection reagent MegaTran 2.0 (Cat# [TT210002]).