

Product datasheet for **RC228280**

TIM 4 (TIMD4) (NM_001146726) Human Tagged ORF Clone

Product data:

Product Type:	Expression Plasmids
Product Name:	TIM 4 (TIMD4) (NM_001146726) Human Tagged ORF Clone
Tag:	Myc-DDK
Symbol:	TIM 4
Synonyms:	SMUCKLER; TIM4
Mammalian Cell Selection:	Neomycin
Vector:	pCMV6-Entry (PS100001)
E. coli Selection:	Kanamycin (25 ug/mL)
ORF Nucleotide Sequence:	>RC228280 representing NM_001146726 Red=Cloning site Blue=ORF Green=Tags(s)

TTTTGTAATACGACTCACTATAGGGCGCCGGGAATTCGTCGACTGGATCCGGTACCGAGGAGATCTGCC
GCC**CGATCGCC**

ATGTCCAAAGAACCTCTCATTCTCTGGCTGATGATTGAGTTTTGGTGGCTTTACCTGACACCAGTCACTT
CAGAGACTGTTGTGACGGAGTTTTGGGTACCCGGTGACTTTGCCCTGTCTGTACTCATCTGGTCTCA
CAACAGCAACAGCATGTGCTGGGGAAAGACCAGTGCCCTACTCCGGTTGCAAGGAGGCGCTCATCCGC
ACTGATGGAATGAGGGTGACCTCAAGAAAGTCAGCAAAATATAGACTTCAGGGGACTATCCCGAGAGGTG
ATGTCTCCTTGACCATCTTAAACCCAGTGAAAGTGACAGCGGTGTACTGCTGCCGCATAGAAGTGCC
TGGCTGGTTCAACGATGTAAGATAAACGTGCGCCTGAATCTACAGAGAGCCTCAACAACCACGCACAGA
ACAGCAACCACCACACGCAGAAACAACAACAAGCCCCACCACCACCCGACAAATGACAACAACCC
CAGCTGCACCTTCCAACAACAGTCGTGACCACACCCGATCTCACAACCGGAACACCACTCCAGATGACAAC
CATTGCCGTCTTCAACAGCAACACGTGCCTTTCACTAACCCCAAGCACCCCTCCGGAGGAAGCCACA
GGTCTTCTGACTCCCGAGCCTTCTAAGGAAGGGCCCATCTCACTGCAGAATCAGAACTGTCTCCCA
GTGATTCCTGGAGTAGTGTGAGTCTACTTCTGCTGACTGTCTGTGACATCCAAGCATCTGATAC
AGCAGTTCTGAGCAGAACAAAAACAACAAACAGGACAGATGGATGGAATACCCATGTCAATGAAGAAT
GAAATGCCATCTCCAACTACTGATGATCATCGCCCCCTCTTGGGATTTGTGCTTTCCGATTTGTTG
TGGCGTTTCTCCTGAGAGGGAAACTCATGGAAACCTATTGTTTCGAGAAACACACAAGGCTAGACTACAT
TGGAGATAGTAAAAATGTCTCAATGACGTGCAGCATGGAAGGGAAGACGAAGACGGCCTTTTTACCTC

ACGCGTACGCGGCCGCTCGAGCAGAACTCATCTCAGAAGAGGATCTGGCAGCAATGATATCCTGGATT
ACAAGGATGACGACGATAAGGTTTAA



[View online »](#)

Protein Sequence: >RC228280 representing NM_001146726
Red=Cloning site Green=Tags(s)

MSKEPLILWLMIEFWWL YLTPVTSETVVTEVLGHRVTL PCLYSSWSHNSNSMCWGDQCPYSGCKEALIR
 TDGMRVTSRKS AKYRLQGTIPRGDVSLTILNPSESDSGVYCCRIEVPGWFNVDKINVRNLNQRAS TTT HR
 TATTTTRRTTTTSP TTTTRQMTTTPAALPTTVVTPDLTTGTPLQMTTIAVFTTANTCLSLTPSTLPEEAT
 GLLTPEPSKEGPI LTA ESETVLPDSWSVVESTSADTVLLTSKASDTAVPEQNKT TKTGQMDGIPMSMK N
 EMPISQLLMI IAPSLGFVLFALFVAFLLRGKLMET YCSQKHTRLDYIGDSKNV LNDVQHGREDEDGLFTL

TRTRPLEQKLISEEDLAANDILDYKDDDDKV

Chromatograms: https://cdn.origene.com/chromatograms/mk8054_c06.zip

Restriction Sites: SgfI-MluI

Cloning Scheme:



ACCN: NM_001146726

ORF Size: 1050 bp

OTI Disclaimer: The molecular sequence of this clone aligns with the gene accession number as a point of reference only. However, individual transcript sequences of the same gene can differ through naturally occurring variations (e.g. polymorphisms), each with its own valid existence. This clone is substantially in agreement with the reference, but a complete review of all prevailing variants is recommended prior to use. [More info](#)

OTI Annotation: This clone was engineered to express the complete ORF with an expression tag. Expression varies depending on the nature of the gene.

Components: The ORF clone is ion-exchange column purified and shipped in a 2D barcoded Matrix tube containing 10ug of transfection-ready, dried plasmid DNA (reconstitute with 100 ul of water).

Reconstitution Method:

1. Centrifuge at 5,000xg for 5min.
2. Carefully open the tube and add 100ul of sterile water to dissolve the DNA.
3. Close the tube and incubate for 10 minutes at room temperature.
4. Briefly vortex the tube and then do a quick spin (less than 5000xg) to concentrate the liquid at the bottom.
5. Store the suspended plasmid at -20°C. The DNA is stable for at least one year from date of shipping when stored at -20°C.

RefSeq: [NM_001146726.2](#)

RefSeq ORF: 1053 bp

Locus ID: 91937

UniProt ID: [Q96H15](#)

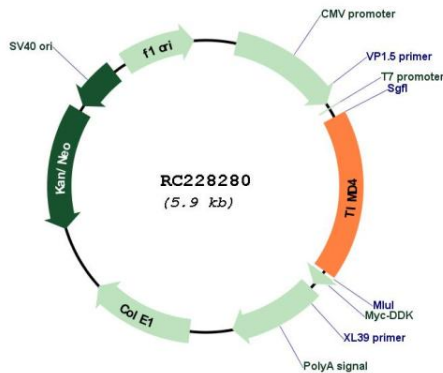
Cytogenetics: 5q33.3

Protein Families: Druggable Genome, Transmembrane

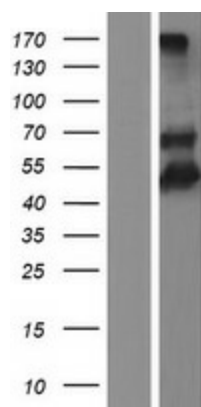
MW: 38.4 kDa

Gene Summary: Phosphatidylserine receptor that enhances the engulfment of apoptotic cells. Involved in regulating T-cell proliferation and lymphotoxin signaling. Ligand for HAVCR1/TIMD1 (By similarity).[UniProtKB/Swiss-Prot Function]

Product images:



Circular map for RC228280



Western blot validation of overexpression lysate (Cat# [LY431308]) using anti-DDK antibody (Cat# [TA50011-100]). Left: Cell lysates from untransfected HEK293T cells; Right: Cell lysates from HEK293T cells transfected with RC228280 using transfection reagent MegaTran 2.0 (Cat# [TT210002]).