

Product datasheet for **RC228271**

MANSC4 (NM_001146221) Human Tagged ORF Clone

Product data:

Product Type:	Expression Plasmids
Product Name:	MANSC4 (NM_001146221) Human Tagged ORF Clone
Tag:	Myc-DDK
Symbol:	MANSC4
Mammalian Cell Selection:	Neomycin
Vector:	pCMV6-Entry (PS100001)
E. coli Selection:	Kanamycin (25 ug/mL)
ORF Nucleotide Sequence:	>RC228271 representing NM_001146221 Red=Cloning site Blue=ORF Green=Tags(s)

TTTTGTAATACGACTCACTATAGGGCGGCCGGAATTCGTCGACTGGATCCGGTACCGAGGAGATCTGCC
GCC**CGATCGCC**

ATGCATGTGGCAGAGGTAGCAGTGAACGTGATATTGCTCCTAAGCATGGGGTGGACATCAGACTCTCTCT
GCTCACCCACAATTTTTACAGAGACTGCTGGATCCGTCGCTCCAGGTCTTCTAATCAATCTGGAGGA
GTCTCAGAAGCTGGGAGCCAGTTCTTGAAGTATTATTCTGAAAGCACTGGCCAGAAGTGCAGTAGGAGC
TGCTGTCTTCGGAAGGATGTTTCCTGTAACCTGGCTGTCTTCTACCACAGTCCTATTCATGACAATATCA
ACTGCCTCCATGTTCACTGCCAACACTGGAGAGCTGCATATTAGAGCCTGGAACCACTGGCCTTTGTA
CAACATAACAGACGGTATAGATCCGGATTTGCTGGTTTTGAACAATCTCCACATATCTAAATACTCGT
TCTTCATCCAATAGATGGGACAGACTAAGGATTCTAAAAGCTATGAATTTAGATAAAACAAACCACCGA
TAAATGGTATGCTGCCATCCACAGAGGCTCCATCCTCAACCACGCATCAAGATTTGGTTGTAACACAAA
CAGTACCAGTTATTCTAAGGAATTAACCACAGATTTTGGGCAAGATTTACTTCCCTGAATGAGTCCATT
ACCACAAAGATAAATAAGGTGTCACCAAGTACTGATTTTCATCAGCAATCCAGATAAATAAGACTATTTCTC
CTTTCTTTGAACCCATAGACACAAAACCTTTCTCATATGCCTGTTCCACCTGGACTCAACAGTAGCAAACA
ATTACTAAACAAAACAAAGGATACAATAGCAGAAACCACACATCTGCAATGAAGATGAGGTATCTGTG
ACTTCAAAGACTTGGCTGTTTCTGTGGCCCTTGCACCTCTGTCATCTTCTCGGCTGTTGTATAGTCA
TCTTGGCATCTGGATGCTGTGAAAGCAGCAGGGCCAGTATAAACAGGACAGAGAAAATCAGGATCCTT
GCAAAATAAAAACCGTAACCATATGAAGGAGAAGTCTTCA

ACGCGTACGCGGCCGCTCGAGCAGAACTCATCTCAGAAGAGGATCTGGCAGCAAATGATATCCTGGATT
ACAAGGATGACGACGATAAGGTTTAA



[View online »](#)

Protein Sequence: >RC228271 representing NM_001146221
Red=Cloning site Green=Tags(s)

MHVAEVAVNVILLLSMGWTSDSLCSPTIFYRDCWIRRFPLLINLEESQKLGAQFLKYYSESTGQKCSRS
 CCLRKDVSCNLAVFYHSPIDHNINCLHVHCPTLESCILEPGTSAILYNI TDGIDPDL LVFEQSPTYLNTR
 SSSNRWDRRLRILKAMNLDKQTTT INGM LPSTEAPSTTHQDLVNTNSTSYSKELTTDFWARFTSLNESI
 TTKINKVSPSTDFISNPDNKTISPFFEPIDTKLSHMPVPPGLNSSKQLLNKTKGYNSRNHTSANEDVSV
 TSKTWLVSVLCTSVIFLGCCIVILASGCCGKQQGQYKPGQRKSGSLQIKNRNHMKENSS

TRTRPLEQKLISEEDLAANDILDYKDDDDKV

Chromatograms: https://cdn.origene.com/chromatograms/mk8039_c03.zip

Restriction Sites: Sgfl-MluI

Cloning Scheme:

Cloning sites used for ORF Shuttling:



* The last codon before the Stop codon of the ORF

ACCN: NM_001146221

ORF Size: 1020 bp

OTI Disclaimer: The molecular sequence of this clone aligns with the gene accession number as a point of reference only. However, individual transcript sequences of the same gene can differ through naturally occurring variations (e.g. polymorphisms), each with its own valid existence. This clone is substantially in agreement with the reference, but a complete review of all prevailing variants is recommended prior to use. [More info](#)

OTI Annotation: This clone was engineered to express the complete ORF with an expression tag. Expression varies depending on the nature of the gene.

Components: The ORF clone is ion-exchange column purified and shipped in a 2D barcoded Matrix tube containing 10ug of transfection-ready, dried plasmid DNA (reconstitute with 100 ul of water).

- Reconstitution Method:**
1. Centrifuge at 5,000xg for 5min.
 2. Carefully open the tube and add 100ul of sterile water to dissolve the DNA.
 3. Close the tube and incubate for 10 minutes at room temperature.
 4. Briefly vortex the tube and then do a quick spin (less than 5000xg) to concentrate the liquid at the bottom.
 5. Store the suspended plasmid at -20°C. The DNA is stable for at least one year from date of shipping when stored at -20°C.

RefSeq: [NM_001146221.5](#)

RefSeq ORF: 1023 bp

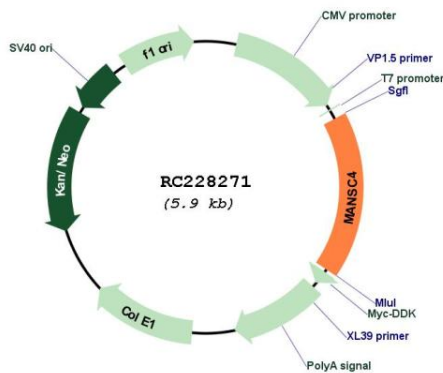
Locus ID: 100287284

UniProt ID: [A6NHS7](#)

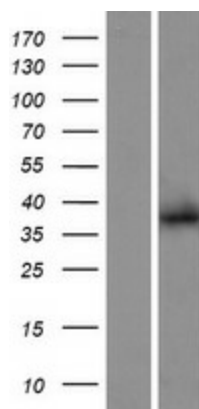
Cytogenetics: 12p11.22

MW: 37.7 kDa

Product images:



Circular map for RC228271



Western blot validation of overexpression lysate (Cat# [LY431299]) using anti-DDK antibody (Cat# [TA50011-100]). Left: Cell lysates from untransfected HEK293T cells; Right: Cell lysates from HEK293T cells transfected with RC228271 using transfection reagent MegaTran 2.0 (Cat# [TT210002]).