

## Product datasheet for RC228268

### MOV10L1 (NM\_001164106) Human Tagged ORF Clone

#### Product data:

Product Type:	Expression Plasmids
Product Name:	MOV10L1 (NM_001164106) Human Tagged ORF Clone
Tag:	Myc-DDK
Symbol:	MOV10L1
Synonyms:	CHAMP; DJ402G11.8
Mammalian Cell Selection:	Neomycin
Vector:	pCMV6-Entry (PS100001)
E. coli Selection:	Kanamycin (25 ug/mL)
ORF Nucleotide Sequence:	>RC228268 representing NM_001164106 Red=Cloning site Blue=ORF Green=Tags(s)

TTTTGTAATACGACTCACTATAGGGCGGCCGGAATTCGTCGACTGGATCCGGTACCGAGGAGATCTGCC  
GCC**CGGATCGCC**

ATGTTTCAGAGTTGGGCACTTCACTCACGTGTTTGTGGACGAGGCTGGGCAGGCAAGTGAGCCGGAATGCC  
TCATTCTCTGGGGCTGATGTCGGACATCAGTGGCCAGATCGTGTGGCAGGAGACCCCATGCAGCTCGG  
CCCAGTCATTAAGTCCAGACTCGCCATGGCCTATGGGCTGAACGTGTCTTTTTGGAACGGCTGATGTCT  
CGACCCGCGTACCAGAGGGACGAAAATGCTTTCGGTGCTTGTGGCGCACATAATCCCTGTTGGTACAA  
AGCTGGTGAAGAACTACCGTCCCACGAGGCCCTGCTGATGCTGCCCTCACGGCTGTTCTACCACAGGGA  
ACTCGAGGTCTGTGCGGACCCACAGTGGTGACCTCCTTGCTGGGCTGGGAGAAGTTGCCTAAGAAAGGC  
TTCCCTCTCATCTTCCATGGTGTGCGGGGACGAGGCACGGGAGGAAAAAGCCCATCGTGGTTCAACC  
CGGCCGAGGCCGTCCAGGTCTGCGCTACTGCTGCCTCCTGGCCACAGCATCTCCAGTCAGGTGTCTGC  
CAGCGACATTGGCGTCATCACGCCCTACCGAAGCAGGTGGAGAAAAATCAGAATCTTTTTGCGTAATGTT  
GATCTGATGGATATAAAGTTGGATCAGTAGAGGAGTTTCAAGGACAAGAGTATCTGGTCATCATCATT  
CGACCGTACGGTCAAATGAAGATAGATTTGAAGATGATCGATATTTTTGGGTTTCTGTCCAACCTAAA  
AAGATTTAATGTTGCAATCACCAGACCCAAAGCTTTGCTGATAGTGTGGGAAACCCCATGTTCTCGTT  
CGAGACCCCTGTTTTGGTGCTTTGCTGGAATACAGTATTACAAACGGTGTTTACATGGGATGCGATTTAC  
CTCCTGCACTGCAGTCTCTGCAAACTGTGGCGAGGGGTGGCAGACCCCTCCTACCCAGTGGTGCCAGA  
ATCCACAGGACCAGAGAAGCATCAGGAGCCAGC

**ACGCGT**ACGCGGCCGCTCGAGCAGAACTCATCTCAGAAGAGGATCTGGCAGCAAATGATATCCTGGATT  
ACAAGGATGACGACGATAAGGTTTAA



[View online »](#)

**Protein Sequence:** >RC228268 representing NM\_001164106  
 Red=Cloning site Green=Tags(s)

MFRVGHFTHVFDVDEAGQASEPECLIPGLMSDISGQIVLAGDPMQLGPVIKSRLAMAYGLNVSFLERLMS  
 RPAYQRDENAFGACGAHNPLLVTKLKKNYSHEALLMLPSRLFYHRELEVCADPTVVTSLLGWEKLPKKG  
 FPLIFHGVRGSEAREGKSPSWFNPAEAVQVLRVCCLLAHSSQVSASDYGIVITPYRKQVEKIRILLRNV  
 DLMDIKVGSVEEFQGEYLVIIISTVRSNEDRFEDDRYFLGFLSNSKRFNVAITRPKALLIVLGNPHVLV  
 RDPFCFGALLEYSITNGVYMGCDLPPALQSLQNCGEGVADPSYPVVPVESTGPEKHQEPS

TRTRPLEQKLISEEDLAANDILDYKDDDDKVV

**Chromatograms:** [https://cdn.origene.com/chromatograms/ja1278\\_f10.zip](https://cdn.origene.com/chromatograms/ja1278_f10.zip)

**Restriction Sites:** SgfI-MluI

**Cloning Scheme:**

Cloning sites used for ORF Shuttling:



\* The last codon before the Stop codon of the ORF

**ACCN:** NM\_001164106

**ORF Size:** 1014 bp

**OTI Disclaimer:** The molecular sequence of this clone aligns with the gene accession number as a point of reference only. However, individual transcript sequences of the same gene can differ through naturally occurring variations (e.g. polymorphisms), each with its own valid existence. This clone is substantially in agreement with the reference, but a complete review of all prevailing variants is recommended prior to use. [More info](#)

**OTI Annotation:** This clone was engineered to express the complete ORF with an expression tag. Expression varies depending on the nature of the gene.

**Components:** The ORF clone is ion-exchange column purified and shipped in a 2D barcoded Matrix tube containing 10ug of transfection-ready, dried plasmid DNA (reconstitute with 100 ul of water).

**Reconstitution Method:**

1. Centrifuge at 5,000xg for 5min.
2. Carefully open the tube and add 100ul of sterile water to dissolve the DNA.
3. Close the tube and incubate for 10 minutes at room temperature.
4. Briefly vortex the tube and then do a quick spin (less than 5000xg) to concentrate the liquid at the bottom.
5. Store the suspended plasmid at -20°C. The DNA is stable for at least one year from date of shipping when stored at -20°C.

**RefSeq:** [NM\\_001164106.1](#), [NP\\_001157578.1](#)

**RefSeq ORF:** 1017 bp

**Locus ID:** 54456

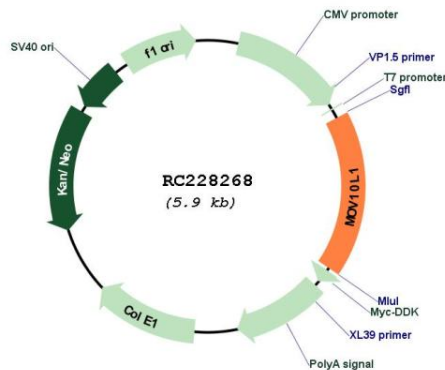
**UniProt ID:** [Q9BXT6](#)

**Cytogenetics:** 22q13.33

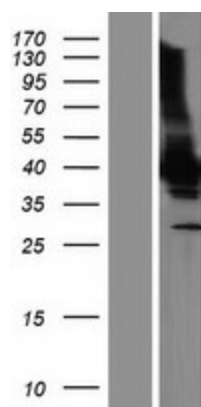
**MW:** 37.3 kDa

**Gene Summary:** This gene is similar to a mouse gene that encodes a putative RNA helicase and shows testis-specific expression. Multiple transcript variants encoding different isoforms have been found for this gene. [provided by RefSeq, Aug 2009]

### Product images:



Circular map for RC228268



Western blot validation of overexpression lysate (Cat# [LY431296]) using anti-DDK antibody (Cat# [TA50011-100]). Left: Cell lysates from untransfected HEK293T cells; Right: Cell lysates from HEK293T cells transfected with RC228268 using transfection reagent MegaTran 2.0 (Cat# [TT210002]).