

Product datasheet for **RC228262**

RDH13 (NM_001145971) Human Tagged ORF Clone

Product data:

Product Type: Expression Plasmids
Product Name: RDH13 (NM_001145971) Human Tagged ORF Clone
Tag: Myc-DDK
Symbol: RDH13
Synonyms: SDR7C3
Mammalian Cell Selection: Neomycin
Vector: pCMV6-Entry (PS100001)
E. coli Selection: Kanamycin (25 ug/mL)
ORF Nucleotide Sequence: >RC228262 representing NM_001145971
 Red=Cloning site Blue=ORF Green=Tags(s)

TTTTGTAATACGACTCACTATAGGGCGGCCGGAATTCGTCGACTGGATCCGGTACCGAGGAGATCTGCC
 GCC**CGATCGCC**

ATGAGCCGCTACCTGCTGCCGCTGTCGGCGCTGGGCACGGTAGCAGGCGCCGCCGTGCTGCTCAAGGACT
 ATGTCACCGGTGGGGCTTGCCCCAGCAAGGCCACCATCCCTGGGAAGACGGTCATCGTGACGGGTGCCAA
 CACAGGCATCGGGAAGCAGACCGCCTTGGAACTGGCCAGGAGAGGAGGCAACATCATCTGGCCTGCCGA
 GACATGGAGAAGTGTGAGGCGGCAGCAAAGGACATCCGCGGGGAGACCCTCAATCACCATGTCAACGCC
 GGCACCTGGACTTGGCTTCCCTCAAGTCTATCCGAGAGTTTGCAGCAAAGATCATTGAAGAGGAGGAGCG
 AGTGGACATTCTAATCAACAACGCGGGTGTGATGCGGTGCCCCACTGGACCACCGAGGACGGCTTCGAG
 ATGCAAGTTTGGCGTTAACCACTGGGTCACCTTCTCTTGACAACTTGGCTGCTGGACAAGCTGAAAGCCT
 CAGCCCCCTTCGCGGATCATCAACCTCTCGTCCCTGGCCCATGTTGCTGGGCACATAGACTTTGACGACTT
 GAACTGGCAGACGAGGAAGTATAACACCAAAGCCGCTACTGCCAGAGCAAGCTCGCCATCGTCCTCTTC
 ACCAAGGAGCTGAGCCGGCGGCTGCAAGGCTCTGGTGTGACTGTCAACGCCCTGCACCCCGGCGTGGCCA
 GGACAGAGCTGGGCAGACACACGGGCATCCATGGCTCCACCTTCCAGCACCACACTCGGGCCCATCTT
 CTGGCTGCTGGTCAAGAGCCCCGAGCTGGCCGCCAGCCAGCACATACCTGGCCGTGGCGGAGGAACTG
 GCGGATGTTTCCGAAAGTACTTCGATGGACTCAAACAGAAGGCCCGGCCCGGAGGCTGAGGATGAGG
 AGGTGGCCCGGAGGCTTGGGCTGAAAGTGCCCGCCTGGTGGGCTTAGAGGCTCCCTCTGTGAGGGAGCA
 GCCCTCCCCAGA

ACGCGTACGCGGCCGCTCGAGCAGAACTCATCTCAGAAGAGGATCTGGCAGCAATGATATCCTGGATT
 ACAAGGATGACGACGATAAGGTTTAA



[View online »](#)

Protein Sequence: >RC228262 representing NM_001145971
Red=Cloning site Green=Tags(s)

MSRYLLPLSALGTVAGAAVLLKDYVTGGACPSKATIPGKTVIVTGANTGIGKQTALELARGGNIILACR
 DMEKCEAAAKDIRGETLNHHVNARHLDLASLKSIREFAAKIEEEEERVDILINNAGVMRCPHWTTEDGFE
 MQFGVNHLLGHFLLTNLLLDKLGKASAPSRILNSSLAHVAGHIDFDLNLWQTRKYNTKAAQCQSKLAIVLF
 TKELSRRLQSGSVTVNALHPGVARTELGRHTGIHGSTFSSTTLGPIFWLLVKSPELAAQPSTYLVAEEL
 ADVSGKYFDGLKQKAPAPEAEDEEVARRLWAESARLVGLEAPSVREQLPR

TRTRPLEQKLISEEDLAANDILDYKDDDDKV

Chromatograms: https://cdn.origene.com/chromatograms/mk8052_g02.zip

Restriction Sites: SgfI-MluI

Cloning Scheme:



ACCN: NM_001145971

ORF Size: 993 bp

OTI Disclaimer: The molecular sequence of this clone aligns with the gene accession number as a point of reference only. However, individual transcript sequences of the same gene can differ through naturally occurring variations (e.g. polymorphisms), each with its own valid existence. This clone is substantially in agreement with the reference, but a complete review of all prevailing variants is recommended prior to use. [More info](#)

OTI Annotation: This clone was engineered to express the complete ORF with an expression tag. Expression varies depending on the nature of the gene.

Components: The ORF clone is ion-exchange column purified and shipped in a 2D barcoded Matrix tube containing 10ug of transfection-ready, dried plasmid DNA (reconstitute with 100 ul of water).

Reconstitution Method:

1. Centrifuge at 5,000xg for 5min.
2. Carefully open the tube and add 100ul of sterile water to dissolve the DNA.
3. Close the tube and incubate for 10 minutes at room temperature.
4. Briefly vortex the tube and then do a quick spin (less than 5000xg) to concentrate the liquid at the bottom.
5. Store the suspended plasmid at -20°C. The DNA is stable for at least one year from date of shipping when stored at -20°C.

RefSeq: [NM_001145971.2](#)

RefSeq ORF: 996 bp

Locus ID: 112724

UniProt ID: [Q8NBN7](#)

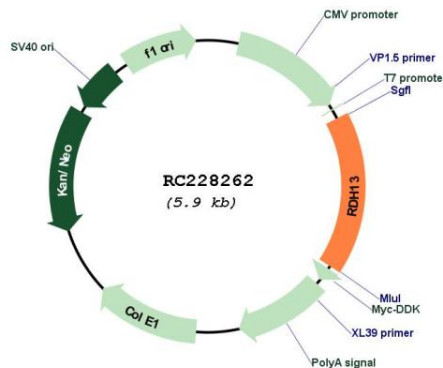
Cytogenetics: 19q13.42

Protein Families: Druggable Genome

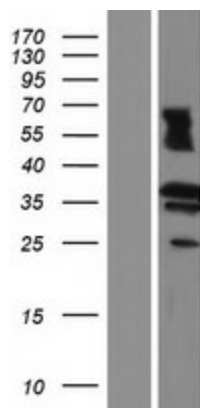
MW: 35.8 kDa

Gene Summary: This gene encodes a mitochondrial short-chain dehydrogenase/reductase, which catalyzes the reduction and oxidation of retinoids. The encoded enzyme may function in retinoic acid production and may also protect the mitochondria against oxidative stress. Alternatively spliced transcript variants have been described. [provided by RefSeq, Mar 2009]

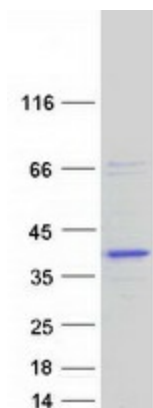
Product images:



Circular map for RC228262



Western blot validation of overexpression lysate (Cat# [LY431290]) using anti-DDK antibody (Cat# [TA50011-100]). Left: Cell lysates from untransfected HEK293T cells; Right: Cell lysates from HEK293T cells transfected with RC228262 using transfection reagent MegaTran 2.0 (Cat# [TT210002]).



Coomassie blue staining of purified RDH13 protein (Cat# [TP328262]). The protein was produced from HEK293T cells transfected with RDH13 cDNA clone (Cat# RC228262) using MegaTran 2.0 (Cat# [TT210002]).