

## Product datasheet for RC228261

### PCYT1B (NM\_001163265) Human Tagged ORF Clone

#### Product data:

Product Type:	Expression Plasmids
Product Name:	PCYT1B (NM_001163265) Human Tagged ORF Clone
Tag:	Myc-DDK
Symbol:	PCYT1B
Synonyms:	CCTB; CTB
Mammalian Cell Selection:	Neomycin
Vector:	pCMV6-Entry (PS100001)
E. coli Selection:	Kanamycin (25 ug/mL)
ORF Nucleotide Sequence:	>RC228261 representing NM_001163265 Red=Cloning site Blue=ORF Green=Tags(s)

TTTTGTAATACGACTCACTATAGGGCGGCCGGAATTCGTCGACTGGATCCGGTACCGAGGAGATCTGCC  
GCC**CGATCGCC**

ATGCCAGTAGTTACCACTGATGCTGAGTCAGAAACAGGTATCCCAAAATCCCTTTCCAATGAGCCTCCCT  
CAGAAACCATGGAGGAAATAGAGCACACATGCCACAGCCTCGACTGACCCTGACTGCACCTGCCCAT  
TGCTGATGAAACCACTGCCAGTGTCAAGCACCCATGAAAACTGACCATTGCTCAGGCCCGCTTAGGA  
ACACCAGCTGACAGGCCGTGTCAGAGTACGCCGATGGAATATTTGACCTCTTCCACTCAGGTCATGCAA  
GAGCCCTTATGCAAGCAAAACACTGTTTCCCAACAGCTACTTGTGGTAGGAGTTTGCAGTGATGATCT  
CACCCACAAATCAAAGTTTACCGTGATGAATGAAGCCGAGAGATACGAAGCTCTCAGACACTGTCCG  
TACGTAGACGAAGTTATCAGAGATGCTCCCTGGCACTCACGCCAGAGTTTCTGGAAAAACAAGATTG  
ACTTTGTGGCTCATGATGACATTCCTGATTCCTCTGCTGGCTCTGATGATGTTTACAAGCACATAAAGGA  
AGCAGGGATGTTCTCAACCGCAGAGAACAGAAGGCATCTCAACATCGGACATCATTACCAGAATTGTT  
CGTGACTATGATGTTTATGCCCGACGTAACTCCAGAGAGGGTATACAGCCAAGGAACTGAATGTCAGCT  
TTATAATGAGAAGAGGTACCGTTTCCAGAACCAAGTGGACAAAAAGTGAAGGAAAAAGTCAAGAATGTGGA  
GGAAAGATCAAAGGAATTTGTGAACAGAGTGAAGAAAAGAGCCATGATCTAATTCAAAAGTGGGAAGAG  
AAGTCAAGGGAATTCATTGGCAACTTCTAGAAGTGTGGACCTGATGGAGCATGGAAGCAGATGTTCC  
AGGAGAGGAGCAGCCGGATGCTGCAGGCCTTATCCCGAAGCAGAGCCCTCTGAAGAGTTGGCGAGGTG  
CAGAGACTTC

**ACGCGT**ACGCGGCCGCTCGAGCAGAACTCATCTCAGAAGAGGATCTGGCAGCAATGATATCCTGGATT  
ACAAGGATGACGACGATAAGGTTTAA



[View online »](#)

**Protein Sequence:** >RC228261 representing NM\_001163265  
Red=Cloning site Green=Tags(s)

MPVVTTDAESETGIPKSLSNEPPSETMEEIEHTCPQPRLLTAPAPFADETNCQCQAPHEKLTIAQARLG  
 TPADRPVRVYADGIFDLFHSGHARALMQAKLFPNSYLLVGVCSDDLTHKFKGFTVMNEAERYEALRHCR  
 YVDEVIRDAPWLTPEFLEKHKIDFVAHDDIPYSSAGSDDVYKHIKEAGMFVPTQRTEGISTSDIITRIV  
 RDYDVYARRNLQRGYTAKELNVSFINEKRYRFQNVQDKMKEKVKVNEERSKEFVNRVEEKSHDLIQKWE  
 KSRFIGNFLFLFGPDGAWKQMFQERSRMLQALSPKQSPKLSWARCRDF

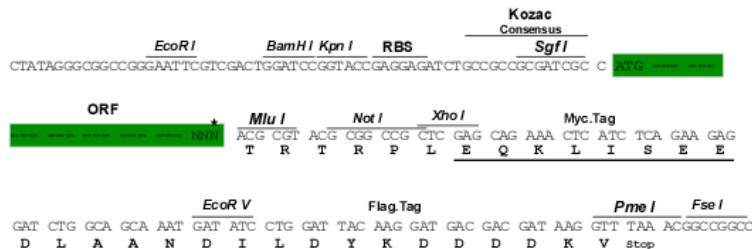
TRTRPLEQKLISEEDLAANDILDYKDDDDDKV

**Chromatograms:** [https://cdn.origene.com/chromatograms/ja1267\\_g01.zip](https://cdn.origene.com/chromatograms/ja1267_g01.zip)

**Restriction Sites:** SgfI-MluI

**Cloning Scheme:**

Cloning sites used for ORF Shuttling:



\* The last codon before the Stop codon of the ORF

**ACCN:** NM\_001163265

**ORF Size:** 990 bp

**OTI Disclaimer:** The molecular sequence of this clone aligns with the gene accession number as a point of reference only. However, individual transcript sequences of the same gene can differ through naturally occurring variations (e.g. polymorphisms), each with its own valid existence. This clone is substantially in agreement with the reference, but a complete review of all prevailing variants is recommended prior to use. [More info](#)

**OTI Annotation:** This clone was engineered to express the complete ORF with an expression tag. Expression varies depending on the nature of the gene.

**Components:** The ORF clone is ion-exchange column purified and shipped in a 2D barcoded Matrix tube containing 10ug of transfection-ready, dried plasmid DNA (reconstitute with 100 ul of water).

**Reconstitution Method:**

1. Centrifuge at 5,000xg for 5min.
2. Carefully open the tube and add 100ul of sterile water to dissolve the DNA.
3. Close the tube and incubate for 10 minutes at room temperature.
4. Briefly vortex the tube and then do a quick spin (less than 5000xg) to concentrate the liquid at the bottom.
5. Store the suspended plasmid at -20°C. The DNA is stable for at least one year from date of shipping when stored at -20°C.

**RefSeq:** [NM\\_001163265.2](#)

**RefSeq ORF:** 993 bp

**Locus ID:** 9468

**UniProt ID:** [Q9Y5K3](#)

**Cytogenetics:** Xp22.11

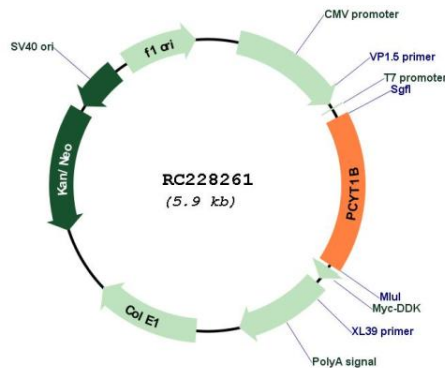
**Protein Families:** Stem cell - Pluripotency

**Protein Pathways:** Glycerophospholipid metabolism, Metabolic pathways

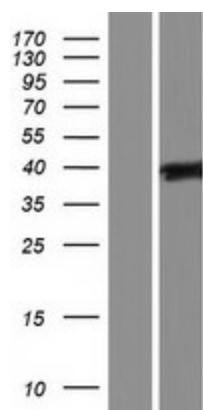
**MW:** 37.9 kDa

**Gene Summary:** The protein encoded by this gene belongs to the cytidyltransferase family. It is involved in the regulation of phosphatidylcholine biosynthesis. Several alternatively spliced transcript variants encoding different isoforms have been found for this gene. [provided by RefSeq, Sep 2009]

**Product images:**



Circular map for RC228261



Western blot validation of overexpression lysate (Cat# [LY431289]) using anti-DDK antibody (Cat# [TA50011-100]). Left: Cell lysates from untransfected HEK293T cells; Right: Cell lysates from HEK293T cells transfected with RC228261 using transfection reagent MegaTran 2.0 (Cat# [TT210002]).