

## Product datasheet for **RC228259**

### ZDHHC15 (NM\_001146256) Human Tagged ORF Clone

#### Product data:

Product Type:	Expression Plasmids
Product Name:	ZDHHC15 (NM_001146256) Human Tagged ORF Clone
Tag:	Myc-DDK
Symbol:	ZDHHC15
Synonyms:	DHHC15; MRX91
Mammalian Cell Selection:	Neomycin
Vector:	pCMV6-Entry (PS100001)
E. coli Selection:	Kanamycin (25 ug/mL)
ORF Nucleotide Sequence:	>RC228259 representing NM_001146256 Red=Cloning site Blue=ORF Green=Tags(s)

TTTTGTAATACGACTCACTATAGGGCGGCCGGAATTCGTCGACTGGATCCGGTACCGAGGAGATCTGCC  
GCC**CGATCGCC**

ATGCGGCGAGGCTGGAAGATGGCTCTGTCTGGGGGCTGCGGTGCTGCCCGGGTACTGTCCTGGGTGC  
CAGTGCTCGTTATTGTCCTCGTCGTCTGGTCTACTATGCCTACGCTTTGAACTCTGCCTGGTTAT  
TTACCTCATACTCTACCATGCCATCTTTGTGTTCTTTACCTGGACCTACTGGAAGTCTATCTTTACTC  
CCACAGCAGCCAAACCAGAAGTCCACTTGTCTACACAGACAAGGAGCGCTATGAAAATGAAGAAAGAC  
CTGAGGTCCAGAAGCAGATGCTTGTGATATGGCCAAAAGCTACCGTTTACACAAGAAGTGGAAAGTGG  
AGCTGTACGATTCTGTGACCGGTGTCATCTGATCAAGCCAGACCGCTGCCACCACTGCTCTGTCTGTGCT  
ATGTGTGTGTTAAAAATGGATCATCACTGCCCTTGGGTTAATAACTGCATTGGATTTTCCAACATAAAAT  
TCTTCCTCAATTCTTAGCTTACTCTGTCTCTACTGCCTGTACATTGCTACGACAGTCTTCAGCTATTT  
CATCAAACTACTGGAGAGGGGAATTACCCAGTGTTCGCTCTAAGTTCATGTCCTTTTTCTCTTTGTG  
GCCTGCATGTTTTTGTGAGCCTTGTGATTCTCTTTGGTTACCATTGTTGGCTTGTGACAGAAAACAAA  
CCACCTTAGAGGCCTTCTGCACTCCAGTGTTCACAAGTGGCCAGAGAAAATGGGTTCAACCTTGGCTT  
CATCAAGAATATCCAGCAGGTGTTTGGAGATAAGAAGAAGTCTGGTTAATACCTATTGGTCCAGCCCT  
GGTGATGGACACTCCTTCCCTATGAGGTCTATGAATGAGTCACAGAACCCTAGCAAAATGAAGAAA  
CCTGGGAAGACAACGAGGATGACAACCAAGATTATCCAGAAGGCTCATCATCTCTGTCTGTGAAAACGGA  
AACA

**ACGCGT**ACGCGGCCGCTCGAGCAGAACTCATCTCAGAAGAGGATCTGGCAGCAAATGATATCCTGGATT  
ACAAGGATGACGACGATAAGGTTTAA



[View online »](#)

**Protein Sequence:** >RC228259 representing NM\_001146256  
Red=Cloning site Green=Tags(s)

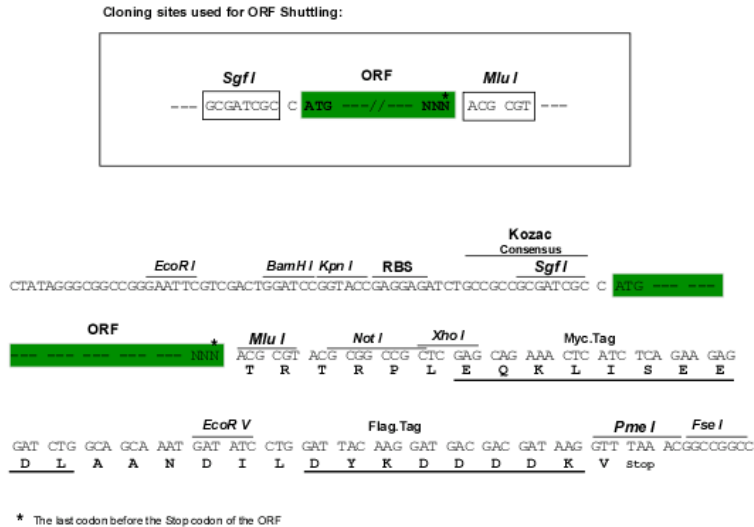
MRRGWKMALSGGLRCCRRVL SWVPVLVIVLVVLWSYYAYVFELCLVIYLILYHAIFVFFFTWYWKSIFTL  
PQQPNQKFHL SYTDKERYENEERPEVQKQMLVDMAKKLPVYTRTGGGAVRFCDRCHLIKDRCHHCSVCA  
MCVLKMDHHCWPWNNCIGFSNYKFLLQLFLAYSVLYCLYIATTVF SYFIKYWRGELPSVRSKFHVLFLLFV  
ACMFFVSLVILFGYHCWLVSRNKTTLEAFCTPVFTSGPEKNGFNLF IKNIQQVFGDKKKFWLIPIGSSP  
GDGHSFPMRSMNESQNPLLANEETWEDNEDDNDQYPEGSSSLAVETET

TRTRPLEQKLISEEDLAANDILDYKDDDDKV

**Chromatograms:** [https://cdn.origene.com/chromatograms/mk8006\\_h03.zip](https://cdn.origene.com/chromatograms/mk8006_h03.zip)

**Restriction Sites:** SgfI-MluI

**Cloning Scheme:**



**ACCN:** NM\_001146256

**ORF Size:** 984 bp

**OTI Disclaimer:** The molecular sequence of this clone aligns with the gene accession number as a point of reference only. However, individual transcript sequences of the same gene can differ through naturally occurring variations (e.g. polymorphisms), each with its own valid existence. This clone is substantially in agreement with the reference, but a complete review of all prevailing variants is recommended prior to use. [More info](#)

**OTI Annotation:** This clone was engineered to express the complete ORF with an expression tag. Expression varies depending on the nature of the gene.

**Components:** The ORF clone is ion-exchange column purified and shipped in a 2D barcoded Matrix tube containing 10ug of transfection-ready, dried plasmid DNA (reconstitute with 100 ul of water).

**Reconstitution Method:**

1. Centrifuge at 5,000xg for 5min.
2. Carefully open the tube and add 100ul of sterile water to dissolve the DNA.
3. Close the tube and incubate for 10 minutes at room temperature.
4. Briefly vortex the tube and then do a quick spin (less than 5000xg) to concentrate the liquid at the bottom.
5. Store the suspended plasmid at -20°C. The DNA is stable for at least one year from date of shipping when stored at -20°C.

**RefSeq:** [NM\\_001146256.1](#), [NP\\_001139728.1](#)

**RefSeq ORF:** 987 bp

**Locus ID:** 158866

**UniProt ID:** [Q96MV8](#)

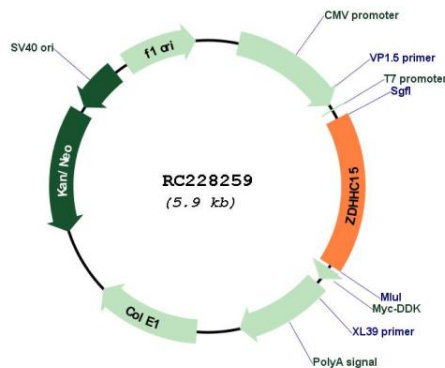
**Cytogenetics:** Xq13.3

**Protein Families:** Transmembrane

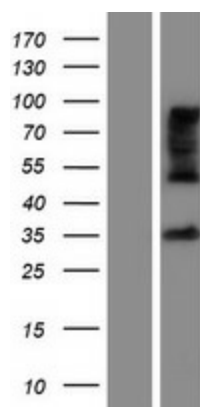
**MW:** 38.2 kDa

**Gene Summary:** The protein encoded by this gene belongs to the DHHC palmitoyltransferase family. Mutations in this gene are associated with mental retardatio X-linked type 91 (MRX91). Alternatively spliced transcript variants encoding different isoforms have been found for this gene. [provided by RefSeq, Sep 2009]

**Product images:**



Circular map for RC228259



Western blot validation of overexpression lysate (Cat# [LY431287]) using anti-DDK antibody (Cat# [TA50011-100]). Left: Cell lysates from untransfected HEK293T cells; Right: Cell lysates from HEK293T cells transfected with RC228259 using transfection reagent MegaTran 2.0 (Cat# [TT210002]).