

## Product datasheet for **RC228258**

### GRAMD2B (NM\_001146320) Human Tagged ORF Clone

#### Product data:

**Product Type:** Expression Plasmids  
**Product Name:** GRAMD2B (NM\_001146320) Human Tagged ORF Clone  
**Tag:** Myc-DDK  
**Symbol:** GRAMD2B  
**Synonyms:** GRAMD3; NS3TP2  
**Mammalian Cell Selection:** Neomycin  
**Vector:** pCMV6-Entry (PS100001)  
**E. coli Selection:** Kanamycin (25 ug/mL)  
**ORF Nucleotide Sequence:** >RC228258 representing NM\_001146320  
**Red=Cloning site Blue=ORF Green=Tags(s)**

TTTTGTAATACGACTCACTATAGGGCGCCGGGAATTCGTCGACTGGATCCGGTACCGAGGAGATCTGCC  
GCC**CGGATCGCC**

ATGTACAAGGCCAATATGCACTTTCACAAGTTGTTTCTTAGTGTCCCAACGGAGGAACCACTGAAGCAA  
GCTTTACCTGTGCTCTACAGAAAGAAATACTATACCAAGGAAAGCTCTTTGTATCAGAAAACCTGGATTTG  
TTTTCAATCCAAAGTCTTTGGAAAAGACACAAAGATCTCTATTCCAGCTTCTCGGTAACCTAATAAAG  
AAAACAAAACCTGCTCTTCTAGTGCCAAACGCCCTGATCATAGCAACAGTCACAGACAGGTACATATTTG  
TCTCCTTACTCTCCAGAGATTCAACTTACAACTACTAAAATCTGTGTGGACACTTAGAAAATACAAG  
TGTTGGTAACAGTCCCAATCCATCTTCTGCTGAAAACAGTTTCCGAGCAGACCGCCCTTCATCTCTGCT  
CTGGATTTCAATGATGAATTCTCAGATCTGGATGGAGTGGTTCAACAAAGAAGGCAAGACATGGAAGGAT  
ATAGCAGTTCTGGTTCTCAAACCTCTGAACTCTGAGAACTCTCGAGATTTCCATGCGACAGAATCCCAAAC  
AGTTCTGAATGTCTCAAGGGAGAAGCAAAGCCAACTCGGGCAGATGCCCATGTGAACAGAGTACCTGAA  
GGAAAAGCCAAGAGTCTCCCTGTACAGGGTCTGTCAGAACTGTTGGAATCTTACATAAAGTCAAGTCTC  
AGAAATGTCCGATGCTTCACCATATTCTTATATCTATGCAATTGTTGTCTGTGCACTAATCATCTCGAC  
CTTCTACATGAGATACAGAATTAATACTCTGGAGGAGCAGCTGGGTTACTAACCTCCATTGTGGACACC  
CATAACTGAACAGGCAGCACCATCTGGCCTGAGGTACAAGTACAATTCAATGTGGAGTTCTCTGTC  
AAGAGCTTACAGCTAACATAGTGAAATTAGAAAAGATACAAAATAACTTACAGAAGTTGCTTGAGAATGG  
TGAC

**ACGCGT**ACGCGGCCGCTCGAGCAGAACTCATCTCAGAAGAGGATCTGGCAGCAAATGATATCCTGGATT  
ACAAGGATGACGACGATAAGGTTTAA



[View online »](#)

**Protein Sequence:** >RC228258 representing NM\_001146320  
Red=Cloning site Green=Tags(s)

MYKANMHFKLFLSVPTEELKQSFTCALQKEILYQGKLFVSENWICFHSKVFGKDTKISIPAFSVTLIK  
 KTKTALLVPNALIIATVTDRIYIFVSLLSRDSTYKLLKSVCGHLENTSVGNPNPSSAENSFRADRPSSLP  
 LDFNDEFSDLGVVQRRQDMEGYSSSGSQTPSENSRDFHATESQTVLNVSKGEAKPTRADAHVNRVPE  
 GKAKSLPVQGLSETVGILHKVKSQKCPMLHHILIFYAIVVCALIIISTFYMYRINTLEEQLGLLTSIVDT  
 HNTEQAAPSGLRSQVQFNVEVLCQELTANIVKLEKIQNNLQKLENGD

TRTRPLEQKLISEEDLAANDILDYKDDDDKV

**Chromatograms:** [https://cdn.origene.com/chromatograms/mk8052\\_e08.zip](https://cdn.origene.com/chromatograms/mk8052_e08.zip)

**Restriction Sites:** SgfI-MluI

**Cloning Scheme:**

Cloning sites used for ORF Shuttling:



\* The last codon before the Stop codon of the ORF

**ACCN:** NM\_001146320

**ORF Size:** 984 bp

**OTI Disclaimer:** The molecular sequence of this clone aligns with the gene accession number as a point of reference only. However, individual transcript sequences of the same gene can differ through naturally occurring variations (e.g. polymorphisms), each with its own valid existence. This clone is substantially in agreement with the reference, but a complete review of all prevailing variants is recommended prior to use. [More info](#)

**OTI Annotation:** This clone was engineered to express the complete ORF with an expression tag. Expression varies depending on the nature of the gene.

**Components:** The ORF clone is ion-exchange column purified and shipped in a 2D barcoded Matrix tube containing 10ug of transfection-ready, dried plasmid DNA (reconstitute with 100 ul of water).

**Reconstitution Method:**

1. Centrifuge at 5,000xg for 5min.
2. Carefully open the tube and add 100ul of sterile water to dissolve the DNA.
3. Close the tube and incubate for 10 minutes at room temperature.
4. Briefly vortex the tube and then do a quick spin (less than 5000xg) to concentrate the liquid at the bottom.
5. Store the suspended plasmid at -20°C. The DNA is stable for at least one year from date of shipping when stored at -20°C.

**RefSeq:** [NM\\_001146320.2](#)

**RefSeq ORF:** 987 bp

**Locus ID:** 65983

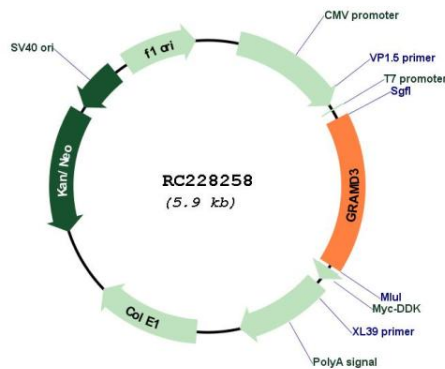
**UniProt ID:** [Q96HH9](#)

**Cytogenetics:** 5q23.2

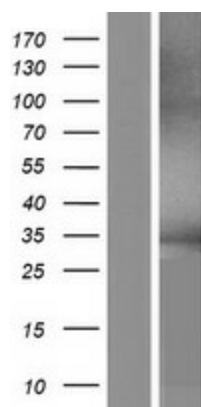
**Protein Families:** Transmembrane

**MW:** 36.5 kDa

**Product images:**



Circular map for RC228258



Western blot validation of overexpression lysate (Cat# [LY431286]) using anti-DDK antibody (Cat# [TA50011-100]). Left: Cell lysates from untransfected HEK293T cells; Right: Cell lysates from HEK293T cells transfected with RC228258 using transfection reagent MegaTran 2.0 (Cat# [TT210002]).