

Product datasheet for **RC228255**

FHL1 (NM_001159702) Human Tagged ORF Clone

Product data:

Product Type:	Expression Plasmids
Product Name:	FHL1 (NM_001159702) Human Tagged ORF Clone
Tag:	Myc-DDK
Symbol:	FHL1
Synonyms:	FCMSU; FHL-1; FHL1A; FHL1B; FLH1A; KYOT; RBMX1A; RBMX1B; SLIM; SLIM-1; SLIM1; SLIMMER; XMPMA
Mammalian Cell Selection:	Neomycin
Vector:	pCMV6-Entry (PS100001)
E. coli Selection:	Kanamycin (25 ug/mL)
ORF Nucleotide Sequence:	>RC228255 representing NM_001159702 Red=Cloning site Blue=ORF Green=Tags(s)

TTTTGTAATACGACTCACTATAGGGCGGCCGGAATTCGTCGACTGGATCCGGTACCGAGGAGATCTGCC
 GCC**CGATCGCC**

ATGGCGGAGAAGTTTGACTGCCACTACTGCAGGGATCCCTTGCAGGGGAAGAAGTATGTGCAAAAGGATG
 GCCACCACTGCTGCCTGAAATGCTTTGACAAGTTCTGTGCCAACACCTGTGTGGAATGCCGAAGCCCAT
 CGGTGCGGACTCCAAGGAGGTGCACTATAAGAACCGCTTCTGGCATGACACCTGCTTCGGCTGTGCCAAG
 TGCCTTACCCCTTGGCCAATGAGACCTTTGTGGCCAAGGACAACAAGATCCTGTGCAACAAGTGCACCA
 CTCGGGAGGACTCCCCAAGTGAAGGGGTGCTTCAAGGCCATTGTGGCAGGAGATCAAAACGTGGAGTA
 CAAGGGGACCGTCTGGCACAAGACTGCTTCACCTGTAGTAAGTCAAGCAAGTCATCGGGACTGGAAGC
 TTCTTCCCTAAAGGGGAGGACTTCTACTGCGTGACTTGCCATGAGACCAAGTTTGCCAAGCATTGCGTGA
 AGTGCAACAAGGCCATCACATCTGGAGGAATCACTTACCAGGATCAGCCCTGGCATGCCGATTGCTTTGT
 GTGTGTTACCTGCTCTAAGAAGCTGGCTGGGCAGCGTTTCAACCGTGTGGAGGACCAAGTATTACTGCGTG
 GATTGCTACAAGAACTTTGTGGCCAAGAAGTGCTGGATGCAAGAACCCCATCACTGGGAAAAGGACTG
 TGCAAGAGTGAGCCACCCAGTCTCTAAAGCTAGGAAGCCCCAGTGTGCCACGGGAAACGCTTGCCCTCT
 CACCCTGTTTCCAGCGCCAACCTCCGGGGCAGGCATCCGGGTGGAGAGAGGACTTGTCCCTCGTGGGTG
 GTGGTTCTTTATAGAAAAATCGAAGCTTAGCAGCTCCTCGAGGCCCGGGTTTGGTAAAGGCTCCAGTGT
 GTGGCCTATGAAGGACAATCCTGGCACGACTACTGCTTCCACTGCAAAAAATGCTCCG

ACGCGTACGCGGCCGCTCGAGCAGAACTCATCTCAGAAGAGGATCTGGCAGCAAATGATATCCTGGATT
 ACAAGGATGACGACGATAAGGTTTAA


[View online »](#)

Protein Sequence: >RC228255 representing NM_001159702
 Red=Cloning site Green=Tags(s)

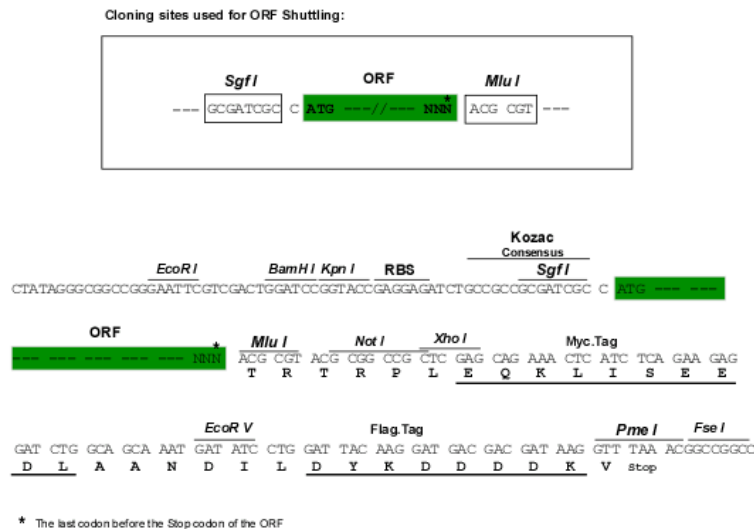
MAEKFDCHYCRDPLQGKKYVQKDGHHCLKCFDKFCANTCVECCKPIGADSKVEVHYKNRFWHDTCFRCAK
 CLHPLANETFVAKDNKILCNKCTTREDSPKCKGCFKAIVAGDQNVYKGTVWHKDCFTCSNCKQVIGTGS
 FFPKGEDFYCVTCHETKFAKHCVKCNKAITSGGITYQDQPHWADCFVCVTCSSKLAGQRFTAVEDQYYCV
 DCYKNFVAKKAGCKNPITGKRTVSRVSHPVSKARKPPVCHGKRLPLTLFPSANLRGRHPGGERTCPSWV
 VVLYRKNRSLAAPRGPLVKAPVWVPMKDNPGTTTASTAKNAP

TRTRPLEQKLISEEDLAANDILDYKDDDDKV

Chromatograms: https://cdn.origene.com/chromatograms/mk8052_b10.zip

Restriction Sites: SgfI-MluI

Cloning Scheme:



ACCN: NM_001159702

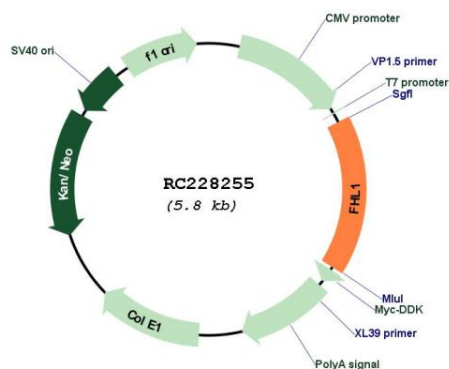
ORF Size: 969 bp

OTI Disclaimer: Due to the inherent nature of this plasmid, standard methods to replicate additional amounts of DNA in E. coli are highly likely to result in mutations and/or rearrangements. Therefore, OriGene does not guarantee the capability to replicate this plasmid DNA. Additional amounts of DNA can be purchased from OriGene with batch-specific, full-sequence verification at a reduced cost. Please contact our customer care team at custsupport@origene.com or by calling 301.340.3188 option 3 for pricing and delivery.

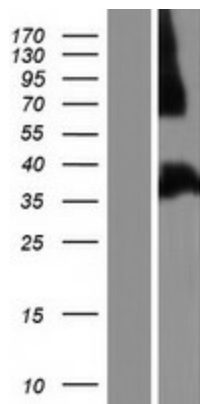
The molecular sequence of this clone aligns with the gene accession number as a point of reference only. However, individual transcript sequences of the same gene can differ through naturally occurring variations (e.g. polymorphisms), each with its own valid existence. This clone is substantially in agreement with the reference, but a complete review of all prevailing variants is recommended prior to use. [More info](#)

OTI Annotation:	This clone was engineered to express the complete ORF with an expression tag. Expression varies depending on the nature of the gene.
Components:	The ORF clone is ion-exchange column purified and shipped in a 2D barcoded Matrix tube containing 10ug of transfection-ready, dried plasmid DNA (reconstitute with 100 ul of water).
Reconstitution Method:	<ol style="list-style-type: none"> 1. Centrifuge at 5,000xg for 5min. 2. Carefully open the tube and add 100ul of sterile water to dissolve the DNA. 3. Close the tube and incubate for 10 minutes at room temperature. 4. Briefly vortex the tube and then do a quick spin (less than 5000xg) to concentrate the liquid at the bottom. 5. Store the suspended plasmid at -20°C. The DNA is stable for at least one year from date of shipping when stored at -20°C.
Note:	Plasmids are not sterile. For experiments where strict sterility is required, filtration with 0.22um filter is required.
RefSeq:	NM_001159702.3
RefSeq ORF:	972 bp
Locus ID:	2273
UniProt ID:	Q13642
Cytogenetics:	Xq26.3
MW:	36.1 kDa
Gene Summary:	This gene encodes a member of the four-and-a-half-LIM-only protein family. Family members contain two highly conserved, tandemly arranged, zinc finger domains with four highly conserved cysteines binding a zinc atom in each zinc finger. Expression of these family members occurs in a cell- and tissue-specific mode and these proteins are involved in many cellular processes. Mutations in this gene have been found in patients with Emery-Dreifuss muscular dystrophy. Multiple alternately spliced transcript variants which encode different protein isoforms have been described.[provided by RefSeq, Nov 2009]

Product images:



Circular map for RC228255



Western blot validation of overexpression lysate (Cat# [LY431283]) using anti-DDK antibody (Cat# [TA50011-100]). Left: Cell lysates from untransfected HEK293T cells; Right: Cell lysates from HEK293T cells transfected with RC228255 using transfection reagent MegaTran 2.0 (Cat# [TT210002]).