

## Product datasheet for RC228251

### Endothelin A Receptor (EDNRA) (NM\_001166055) Human Tagged ORF Clone

#### Product data:

Product Type:	Expression Plasmids
Product Name:	Endothelin A Receptor (EDNRA) (NM_001166055) Human Tagged ORF Clone
Tag:	Myc-DDK
Symbol:	Endothelin A Receptor
Synonyms:	ET-A; ETA; ETA-R; ETAR; ETRA; hET-AR; MFDA
Mammalian Cell Selection:	Neomycin
Vector:	pCMV6-Entry (PS100001)
E. coli Selection:	Kanamycin (25 ug/mL)
ORF Nucleotide Sequence:	>RC228251 representing NM_001166055 Red=Cloning site Blue=ORF Green=Tags(s)

TTTTGTAATACGACTCACTATAGGGCGGCCGGAATTCGTCGACTGGATCCGGTACCGAGGAGATCTGCC  
GCC**CGATCGCC**

ATGGAACCCCTTGCCTCAGGGCATCCTTTGGCTGGCACTGGTTGGATGTGTAATCAGTGATAATCCTG  
AGAGATACAGCACAAATCTAAGCAATCATGTGGATGATTCACCACTTTTCGTGGCAGAGCTCAGCTT  
CCTGGTTACCACTCATCAACCCACTAATTTGGTCCTACCCAGCAATGGCTCAATGCACAATATTGCCA  
CAGCAGACTAAAATTACTTCAGCTTTCAAATACATTAACACTGTGATATCTTGTACTATTTTCATCGTGG  
GAATGGTGGGGAATGCAACTCTGCTCAGGATCATTACCAGAACAATGTATGAGGAATGGCCCCAACGC  
GCTGATAGCCAGTCTTGCCCTTGAGACCTTATCTATGTGGTCATTGATCTCCCTATCAATGTATTTAAG  
TTCTACCAAGATGTAAAGGACTGGTGGCTCTTCGGTCTATTTCTGTATGCCCTTGGTGTGCACTGCGA  
TCTTCTACACCCTCATGACTTGTGAGATGTTGAACAGAAGGAATGGCAGCTTGAGAATTGCCCTCAGTGA  
ACATCTTAAGCAGCGTCGAGAAGTGGCAAAAACAGTTTCTGCTTGGTTGTAATTTTGTCTTTGCTGG  
TTCCCTCTTCATTTAAGCCGTATATTGAAGAAAAGTGTATAACGAGATGGACAAGAACCAGTGTGAAT  
TACTTAGTTTCTTACTGCTCATGGATTACATCGGTATTAACCTGGCAACCATGAATTCATGTATAAACC  
CATAGCTCTGTATTTGTGAGCAAGAAATTTAAAAATGTTTCCAGTCATGCCTCTGCTGCTGCTGTTAC  
CAGTCCAAAAGTCTGATGACCTCGTCCCATGAACGGAACAAGCATCCAGTGAAGAACCACGATCAAA  
ACAACCACAACACAGACCGGAGCAGCCATAAGGACAGCATGAAC

**ACGCGT**ACGCGGCCGCTCGAGCAGAAACTCATCTCAGAAGAGGATCTGGCAGCAAATGATATCCTGGATT  
ACAAGGATGACGACGATAAGGTTTAA



[View online »](#)

**Protein Sequence:** >RC228251 representing NM\_001166055  
Red=Cloning site Green=Tags(s)

METLCLRASFWLALVGCVISDNPERYSTNLSNHVDDFTFRGTELSFLVTTHQPTNLVLPSNGSMHNYCP  
 QQTKITSAFKYINTVISCTIFIVGMVGNATLLRIYQNKCMRNGPNALIASLALGDLIYVVIDLPINVK  
 FYQDVKDWLFGFYFCMPLVCTAIFYTLMTCEMLNRRNGSLRIALSEHLKQRREVAKTVFCLVVIFALCW  
 FPLHLSRILKKTVYNEMDKNRCELLSFLLLMDYIGINLATMNSCINPIALYFVSKKFKNCFQSCLCCCCY  
 QSKSLMTSVPMTGTSIQWKNHDQNNHNTDRSSHKDSMN

TRTRPLEQKLISEEDLAANDILDYKDDDDKV

**Chromatograms:** [https://cdn.origene.com/chromatograms/mk8051\\_e09.zip](https://cdn.origene.com/chromatograms/mk8051_e09.zip)

**Restriction Sites:** SgfI-MluI

**Cloning Scheme:**

Cloning sites used for ORF Shuttling:



\* The last codon before the Stop codon of the ORF

**ACCN:** NM\_001166055

**ORF Size:** 954 bp

**OTI Disclaimer:** The molecular sequence of this clone aligns with the gene accession number as a point of reference only. However, individual transcript sequences of the same gene can differ through naturally occurring variations (e.g. polymorphisms), each with its own valid existence. This clone is substantially in agreement with the reference, but a complete review of all prevailing variants is recommended prior to use. [More info](#)

**OTI Annotation:** This clone was engineered to express the complete ORF with an expression tag. Expression varies depending on the nature of the gene.

**Components:** The ORF clone is ion-exchange column purified and shipped in a 2D barcoded Matrix tube containing 10ug of transfection-ready, dried plasmid DNA (reconstitute with 100 ul of water).

**Reconstitution Method:**

1. Centrifuge at 5,000xg for 5min.
2. Carefully open the tube and add 100ul of sterile water to dissolve the DNA.
3. Close the tube and incubate for 10 minutes at room temperature.
4. Briefly vortex the tube and then do a quick spin (less than 5000xg) to concentrate the liquid at the bottom.
5. Store the suspended plasmid at -20°C. The DNA is stable for at least one year from date of shipping when stored at -20°C.

**RefSeq:** [NM\\_001166055.1](#), [NP\\_001159527.1](#)

**RefSeq ORF:** 957 bp

**Locus ID:** 1909

**UniProt ID:** [P25101](#)

**Cytogenetics:** 4q31.22-q31.23

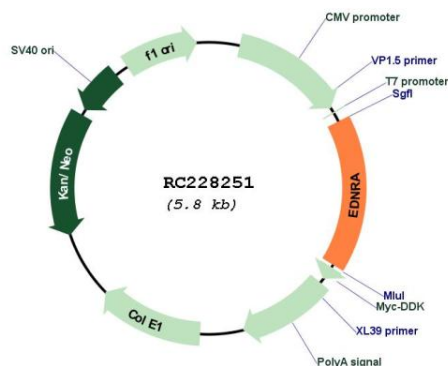
**Protein Families:** Druggable Genome, GPCR, Transmembrane

**Protein Pathways:** Calcium signaling pathway, Neuroactive ligand-receptor interaction, Vascular smooth muscle contraction

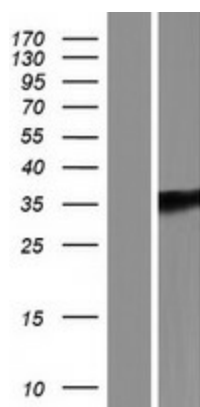
**MW:** 36.49 kDa

**Gene Summary:** This gene encodes the receptor for endothelin-1, a peptide that plays a role in potent and long-lasting vasoconstriction. This receptor associates with guanine-nucleotide-binding (G) proteins, and this coupling activates a phosphatidylinositol-calcium second messenger system. Polymorphisms in this gene have been linked to migraine headache resistance. Alternative splicing results in multiple transcript variants. [provided by RefSeq, Oct 2009]

### Product images:



Circular map for RC228251



Western blot validation of overexpression lysate (Cat# [LY431279]) using anti-DDK antibody (Cat# [TA50011-100]). Left: Cell lysates from untransfected HEK293T cells; Right: Cell lysates from HEK293T cells transfected with RC228251 using transfection reagent MegaTran 2.0 (Cat# [TT210002]).