

## Product datasheet for **RC228243**

### FHL1 (NM\_001159701) Human Tagged ORF Clone

#### Product data:

Product Type:	Expression Plasmids
Product Name:	FHL1 (NM_001159701) Human Tagged ORF Clone
Tag:	Myc-DDK
Symbol:	FHL1
Synonyms:	FCMSU; FHL-1; FHL1A; FHL1B; FLH1A; KYOT; RBMX1A; RBMX1B; SLIM; SLIM-1; SLIM1; SLIMMER; XMPMA
Mammalian Cell Selection:	Neomycin
Vector:	pCMV6-Entry (PS100001)
E. coli Selection:	Kanamycin (25 ug/mL)
ORF Nucleotide Sequence:	>RC228243 representing NM_001159701 Red=Cloning site Blue=ORF Green=Tags(s)

TTTTGTAATACGACTCACTATAGGGCGGCCGGAATTCGTCGACTGGATCCGGTACCGAGGAGATCTGCC  
GCC**CGATCGCC**

ATGACTTTCTATGTGGCTCTCTGGCTCTGGAGCTAATTTGGATGCTGAGTAGCCCCGCAGGTCCCTCCA  
GCTACAAGGTGGGCACCATGGCGGAGAAGTTTACTGCCACTACTGCAGGGATCCCTTGCAGGGGAAGAA  
GTATGTGCAAAAGGATGGCCACCACTGCTGCCTGAAATGCTTTGACAAGTTCTGTGCCAACACCTGTGTG  
GAATGCCGCAAGCCATCGGTGCGGACTCCAAGGAGGTGCACTATAAGAACCCTTCTGGCATGACACCT  
GCTTCCGCTGTGCCAAGTGCCTCACCCCTTGGCCAATGAGACCTTTGTGGCCAAGGACAACAAGATCCT  
GTGCAACAAGTGCACCACTCGGGAGGACTCCCCAAGTGAAGGGGTGCTTCAAGGCCATTGTGGCAGGA  
GATCAAAACGTGGAGTACAAGGGGACCGTCTGGCACAAGACTGCTTACCTGTAGTAACGCAAGCAAG  
TCATCGGGACTGGAAGCTTCTCCCTAAAGGGGAGGACTTCTACTGCGTGACTTGCCATGAGACCAAGTT  
TGCCAAGCATTGCGTGAAGTGAACAAGGCCATCACATCTGGAGGAATCACTTACCAGGATCAGCCCTGG  
CATGCCGATTGCTTTGTGTGTGTACCTGCTCTAAGAAGCTGGCTGGGCAGCGTTTACCCTGTGGAGG  
ACCAGTATTACTGCGTGGATTGTACAAGAAGCTTTGTGGCCAAGAAGTGTGCTGGATGCAAGAACCCCAT  
CACTGGGTTTGGTAAAGGCTCCAGTGTGGTGGCCTATGAAGGACAATCCTGGCAGCACTACTGCTCCAC  
TGCAAAAATGCTCCGTGAATCTGGCCAACAAGCGCTTTGTTTTCCACCAGGAGCAAGTGTATTGTCCTCCG  
ACTGTGCCAAAAGCTG

**ACGCGT**ACGCGGCCGCTCGAGCAGAACTCATCTCAGAAGAGGATCTGGCAGCAAATGATATCCTGGATT  
ACAAGGATGACGACGATAAGGTTTAA



[View online »](#)



**Reconstitution Method:**

1. Centrifuge at 5,000xg for 5min.
2. Carefully open the tube and add 100ul of sterile water to dissolve the DNA.
3. Close the tube and incubate for 10 minutes at room temperature.
4. Briefly vortex the tube and then do a quick spin (less than 5000xg) to concentrate the liquid at the bottom.
5. Store the suspended plasmid at -20°C. The DNA is stable for at least one year from date of shipping when stored at -20°C.

**RefSeq:** [NM\\_001159701.2](#)

**RefSeq ORF:** 930 bp

**Locus ID:** 2273

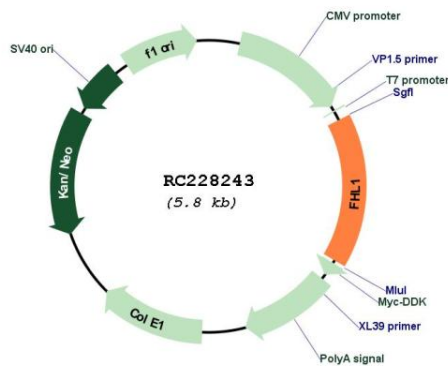
**UniProt ID:** [Q13642](#)

**Cytogenetics:** Xq26.3

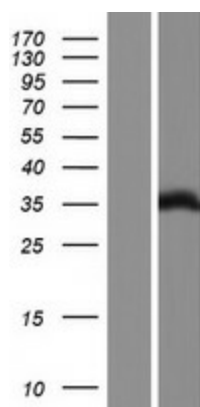
**MW:** 34.8 kDa

**Gene Summary:** This gene encodes a member of the four-and-a-half-LIM-only protein family. Family members contain two highly conserved, tandemly arranged, zinc finger domains with four highly conserved cysteines binding a zinc atom in each zinc finger. Expression of these family members occurs in a cell- and tissue-specific mode and these proteins are involved in many cellular processes. Mutations in this gene have been found in patients with Emery-Dreifuss muscular dystrophy. Multiple alternately spliced transcript variants which encode different protein isoforms have been described.[provided by RefSeq, Nov 2009]

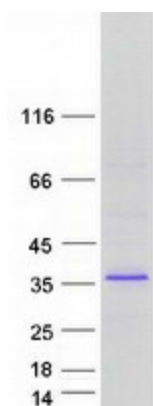
## Product images:



Circular map for RC228243



Western blot validation of overexpression lysate (Cat# [LY431271]) using anti-DDK antibody (Cat# [TA50011-100]). Left: Cell lysates from untransfected HEK293T cells; Right: Cell lysates from HEK293T cells transfected with RC228243 using transfection reagent MegaTran 2.0 (Cat# [TT210002]).



Coomassie blue staining of purified FHL1 protein (Cat# [TP328243]). The protein was produced from HEK293T cells transfected with FHL1 cDNA clone (Cat# RC228243) using MegaTran 2.0 (Cat# [TT210002]).