

Product datasheet for **RC228241**

NRG1 (NM_001159996) Human Tagged ORF Clone

Product data:

Product Type:	Expression Plasmids
Product Name:	NRG1 (NM_001159996) Human Tagged ORF Clone
Tag:	Myc-DDK
Symbol:	NRG1
Synonyms:	ARIA; GGF; GGF2; HGL; HRG; HRG1; HRGA; MST131; MSTP131; NDF; NRG1-IT2; SMDF
Mammalian Cell Selection:	Neomycin
Vector:	pCMV6-Entry (PS100001)
E. coli Selection:	Kanamycin (25 ug/mL)
ORF Nucleotide Sequence:	>RC228241 representing NM_001159996 Red=Cloning site Blue=ORF Green=Tags(s)

TTTTGTAATACGACTCACTATAGGGCGGCCGGAATTCGTCGACTGGATCCGGTACCGAGGAGATCTGCC
GCC**CGATCGCC**

ATGCAGATTCTAAACACATAAGCATTGAAGATATTACAGCTACATCTACATCCACCACTGGGACAAGCC
ATCTTGTAATGTGCGGAGAAGGAGAAAACCTTCTGTGTGAATGGAGGGGAGTGCTTCATGGTGAAAGA
CCTTTCAAACCCCTCGAGATACTTGTGCAAGTGCCAACCTGGATTCAGTGGAGCAAGATGTACTGAGAAT
GTGCCCATGAAAGTCCAAACCAAGAAAAGGCGGAGGAGCTGTACCAGAAGAGAGTGCTGACCATAACCG
GCATCTGCATCGCCCTCCTTGTGGTCGGCATCATGTGTGTGGTGGCCTACTGCAAAACCAAGAAACAGCG
GAAAAAGCTGCATGACCGTCTTCGGCAGAGCCTTCGGTCTGAACGAAACAATATGATGAACATTGCCAAT
GGGCTCACCATCCTAACCCACCCCGAGAATGTCCAGCTGGTGAATCAATACGTATCTAAAAACGTCA
TCTCCAGTGAGCATATTGTTGAGAGAGAAGCAGAGACATCCTTTCCACCAGTCACTATACTTCCACAGC
CCATCACTCCACTACTGTACCCAGACTCCTAGCCACAGCTGGAGCAACGGACACACTGAAAGCATCCTT
TCCGAAAGCCACTCTGTAATCGTGATGTCATCCGTAGAAAACAGTAGGCACAGCAGCCCACTGGGGCC
CAAGAGGACGTCTTAATGGCACAGGAGGCCCTCGTGAATGTAACAGCTTCCTCAGGCATGCCAGAGAAAC
CCCTGATTCTACCGAGACTCTCCTCATAGTGAAGACATAACCTTATAGCTGAGCTAAGGAGAAACAAG
GCACACAGATCCAAATGCATGCAGATCCAGCTATCAGCAACTCATCTTAGATCTTCTCCATTCCCCATT
TGGGCTTCATTCTC

ACGCGTACGCGGCCGCTCGAGCAGAAACTCATCTCAGAAGAGGATCTGGCAGCAATGATATCCTGGATT
ACAAGGATGACGACGATAAGGTTTAA



[View online »](#)

Protein Sequence: >RC228241 representing NM_001159996
 Red=Cloning site Green=Tags(s)

MQIPKHISIEDITATSTTTGTSHLVKCAEKEKTFVNGGECFMVKDLSNPSRYLCKCQPGFTGARCTEN
 VPMKVQNQEKAELVYQKRVLTITGICIAALLVVGIMCVVAYCKTKKQKRLHDLRQSLRSERNMMNIN
 GPHHPNPPPEVQLVNVQYVSKNVISSEHIVERAETSFSSTSHYTSTAHSTTVTQTPSHWSNGHTESIL
 SESHVIVMSSVENSRRHSSPTGGPRGRLNGTGGPRECNFLRHARETPDSYRDSPHSERHNLIAELRRNK
 AHRSKCMQIQLSATHLRSSSIPHLGFIL

TRTRPLEQKLISEEDLAANDILDYKDDDDKV

Chromatograms: https://cdn.origene.com/chromatograms/mk8052_a07.zip

Restriction Sites: SgfI-MluI

Cloning Scheme:



ACCN: NM_001159996

ORF Size: 924 bp

OTI Disclaimer: The molecular sequence of this clone aligns with the gene accession number as a point of reference only. However, individual transcript sequences of the same gene can differ through naturally occurring variations (e.g. polymorphisms), each with its own valid existence. This clone is substantially in agreement with the reference, but a complete review of all prevailing variants is recommended prior to use. [More info](#)

OTI Annotation: This clone was engineered to express the complete ORF with an expression tag. Expression varies depending on the nature of the gene.

Components: The ORF clone is ion-exchange column purified and shipped in a 2D barcoded Matrix tube containing 10ug of transfection-ready, dried plasmid DNA (reconstitute with 100 ul of water).

Reconstitution Method:

1. Centrifuge at 5,000xg for 5min.
2. Carefully open the tube and add 100ul of sterile water to dissolve the DNA.
3. Close the tube and incubate for 10 minutes at room temperature.
4. Briefly vortex the tube and then do a quick spin (less than 5000xg) to concentrate the liquid at the bottom.
5. Store the suspended plasmid at -20°C. The DNA is stable for at least one year from date of shipping when stored at -20°C.

RefSeq: [NM_001159996.2](#), [NP_001153468.1](#)

RefSeq ORF: 927 bp

Locus ID: 3084

Cytogenetics: 8p12

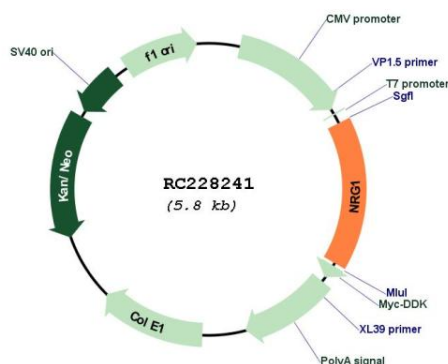
Protein Families: Druggable Genome, Secreted Protein, Transcription Factors, Transmembrane

Protein Pathways: ErbB signaling pathway

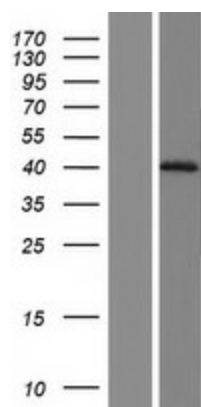
MW: 34.2 kDa

Gene Summary: The protein encoded by this gene is a membrane glycoprotein that mediates cell-cell signaling and plays a critical role in the growth and development of multiple organ systems. An extraordinary variety of different isoforms are produced from this gene through alternative promoter usage and splicing. These isoforms are expressed in a tissue-specific manner and differ significantly in their structure, and are classified as types I, II, III, IV, V and VI. Dysregulation of this gene has been linked to diseases such as cancer, schizophrenia, and bipolar disorder (BPD). [provided by RefSeq, Apr 2016]

Product images:



Circular map for RC228241



Western blot validation of overexpression lysate (Cat# [LY431269]) using anti-DDK antibody (Cat# [TA50011-100]). Left: Cell lysates from untransfected HEK293T cells; Right: Cell lysates from HEK293T cells transfected with RC228241 using transfection reagent MegaTran 2.0 (Cat# [TT210002]).