

Product datasheet for **RC228239**

FAM172A (NM_001163418) Human Tagged ORF Clone

Product data:

Product Type:	Expression Plasmids
Product Name:	FAM172A (NM_001163418) Human Tagged ORF Clone
Tag:	Myc-DDK
Symbol:	FAM172A
Synonyms:	C5orf21; Toupee
Mammalian Cell Selection:	Neomycin
Vector:	pCMV6-Entry (PS100001)
E. coli Selection:	Kanamycin (25 ug/mL)
ORF Nucleotide Sequence:	>RC228239 representing NM_001163418 Red=Cloning site Blue=ORF Green=Tags(s)

TTTTGTAATACGACTCACTATAGGGCGGCCGGAATTCGTCGACTGGATCCGGTACCGAGGAGATCTGCC
GCC**CGGATCGCC**

ATGAAAAAAGATGAACCGCCTCTTGATTTTCTGATACCCTGGAAGGATTTGAATATGCTTTTAAATGAAA
AGGGACAGTTAAGACACATAAAACTGGGGAACCATTTGTTTTAACTACCGGGAAGATTTACACAGATG
GAACAGAAAAGATACGAGGCTCTAGGAGAGATCATCACGAAGTATGTATATGAGCTCCTGGAAAAGGAT
TGTAATTTGAAAAAGTATCTATTCCAGAAGGATATGGAGTAATAGTACTAAATCCCAATGAAAACTATA
TTGAAGTAGAAAAGCCGAAGATACACGTACAGTCATCATCTGATAGTTCCAGATGAACCAGCAGAAAAACG
GGAAAGAAAAGATAAAGTTTCTAAAGAAAACAAAGAAGCGACGTGATTTCTATGAGAAGTATCGTAAACCC
CAAAGAGAAAAGAAATGATGCAATTGTATATCAGAGAAAATGGTTCTCCTGAAGAACATGCAATCTATG
TTTGGGATCATTTCATAGCTCAGGCTGCTGCTGAGAATGTGTTTTTCGTTGCTCACAGCTATGGAGGACT
TGCTTTTGTGAACTGATGATTCACGAGAAGCCGATGTAAAAATAAGGTAAGTCTGTGGCATTGACA
GACTCTGTTCACAATGTGTGGCATCAAGAAGCTGGCAAAACGATTCGAGAATGGATGAGAGAGAAGTGT
GTAATTGGGTCTCTAGCTCAGAACCATTAGACACATCAGTGGAGTCCATGCTACCTGATTGCCCCCGGT
CTCAGCAGGCACCGACCGTCACGAGCTAACTTCTGGAAGAGCTTCCGTCTATTTCAAATCTTTACC
GAAGCCTCAGAGCCAAGACCAGCTCCCTGAAGCCGGCTGTGACGCGCCGCTCCCACCGCATCAAGCAGC
AAGAGCTG

ACGCGTACGCGGCCGCTCGAGCAGAAACTCATCTCAGAAGAGGATCTGGCAGCAAATGATATCCTGGATT
ACAAGGATGACGACGATAAGGTTTAA



[View online »](#)

Protein Sequence: >RC228239 representing NM_001163418
Red=Cloning site Green=Tags(s)

MKKDEPPLDFPDTLEGFEYAFNEKGQLRHIKTGEPFVFNYREDLHRWNQKRYEALGEIITKYVYELLEKD
 CNLKKVSIPEGYGIVLNPENYIEVEKPKIHVQSSSDSDEPAEKREKDKVSKETKKRRDFYEKYRNP
 QREKEMQLYIRENGSPEEHAIYVWDHFIAQAAENVFVAHSYGGLAFVELMIQREADVKNKVTAVALT
 DSVHNVWHQEAGKTIREWMRENCNWNVSSSEPLDTSVESMLPDCPRVSAGTDRHELT SWKSFPSIFKFFT
 EASEAKTSSLKPAVTRRSHRIKHEEL

TRTRPLEQKLISEEDLAANDILDYKDDDDKV

Chromatograms: https://cdn.origene.com/chromatograms/mk8051_h03.zip

Restriction Sites: SgfI-MluI

Cloning Scheme:



ACCN: NM_001163418

ORF Size: 918 bp

OTI Disclaimer: The molecular sequence of this clone aligns with the gene accession number as a point of reference only. However, individual transcript sequences of the same gene can differ through naturally occurring variations (e.g. polymorphisms), each with its own valid existence. This clone is substantially in agreement with the reference, but a complete review of all prevailing variants is recommended prior to use. [More info](#)

OTI Annotation: This clone was engineered to express the complete ORF with an expression tag. Expression varies depending on the nature of the gene.

Components: The ORF clone is ion-exchange column purified and shipped in a 2D barcoded Matrix tube containing 10ug of transfection-ready, dried plasmid DNA (reconstitute with 100 ul of water).

Reconstitution Method:

1. Centrifuge at 5,000xg for 5min.
2. Carefully open the tube and add 100ul of sterile water to dissolve the DNA.
3. Close the tube and incubate for 10 minutes at room temperature.
4. Briefly vortex the tube and then do a quick spin (less than 5000xg) to concentrate the liquid at the bottom.
5. Store the suspended plasmid at -20°C. The DNA is stable for at least one year from date of shipping when stored at -20°C.

RefSeq: [NM_001163418.1](#), [NP_001156890.1](#)

RefSeq ORF: 921 bp

Locus ID: 83989

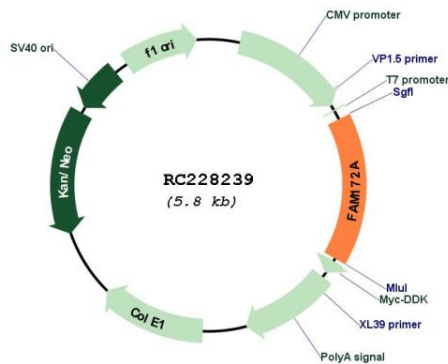
UniProt ID: [Q8WUF8](#)

Cytogenetics: 5q15

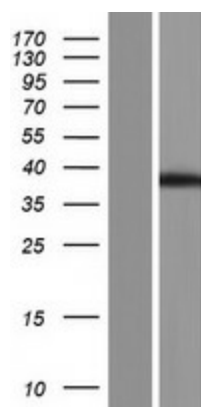
MW: 35.6 kDa

Gene Summary: Plays a role in the regulation of alternative splicing, by interacting with AGO2 and CHD7. Seems to be required for stabilizing protein-protein interactions at the chromatin-spliceosome interface. May have hydrolase activity.[UniProtKB/Swiss-Prot Function]

Product images:



Circular map for RC228239



Western blot validation of overexpression lysate (Cat# [LY431267]) using anti-DDK antibody (Cat# [TA50011-100]). Left: Cell lysates from untransfected HEK293T cells; Right: Cell lysates from HEK293T cells transfected with RC228239 using transfection reagent MegaTran 2.0 (Cat# [TT210002]).