

Product datasheet for **RC228238**

GLRB (NM_001166061) Human Tagged ORF Clone

Product data:

Product Type:	Expression Plasmids
Product Name:	GLRB (NM_001166061) Human Tagged ORF Clone
Tag:	Myc-DDK
Symbol:	GLRB
Synonyms:	HKPX2
Mammalian Cell Selection:	Neomycin
Vector:	pCMV6-Entry (PS100001)
E. coli Selection:	Kanamycin (25 ug/mL)
ORF Nucleotide Sequence:	>RC228238 representing NM_001166061 Red=Cloning site Blue=ORF Green=Tags(s)

TTTTGTAATACGACTCACTATAGGGCGGCCGGAATTCGTCGACTGGATCCGGTACCGAGGAGATCTGCC
GCC**CGGATCGCC**

ATGAAGTTTTTATTGACAACTGCCTTTTTAATTTAATTTCTTGTGGTGGAAGAAGCCTATTCTAAGG
AAAAGTCTTCAAAGAAAGGGAAGGGGAAAAAGAAGCAGTATCTATGCCCATCTCAGCAGTCAGCAGAGGA
CCTTGCCCGAGTACCTGCCAACTCCACTAGCAATATCTTGAACAGGTTATTGGTCAGTTATGATCCCAGG
ATAAGACCAAACCTCAAAGGCATTCTCTGTTGATGTAGTAGTCAACATTTTTATTAACAGTTTTGGATCCA
TTCAAGAAACAACAATGGACTATAGAGTTAACATCTTCTGAGACAAAAATGGAATGACCCAGGCTGAA
GCTCCCCAGTGATTTTAGGGTTTCAGATGCACTGACAGTGGATCCAACAATGTACAAGTGTATGGAAA
CCTGATTTATTTTTGCAAATGAAAAAGTGCCAATTTTCATGATGTGACCCAGGAAAACATCCTCCTCT
TTATTTTTCGTGATGGAGATGTCCTTGTGAGCATGAGGTTATCTATTACTCTTTCATGCCCTTTGGACTT
GACATTGTTTCCCATGGATACACAACGTTGCAAGATGCAACTGGAGAGCTTTGGTTACACAACATGATGAT
TTACGATTTATCTGGCAGTCAGGAGATCCTGTGCAATTAGAAAAAATGCCTTGCCTCAATTTGATATCA
AAAAGGAAGATATTGAATATGGTAACTGTACAAAATACTATAAAGGCACGGGCTACTACACATGCGTGGA
AGTCATCTCACCTGAGGAGGCAGGTCGGCTTTTACATGATGGGGTCTACGCCCAACCCTGCTCATT
GTTGTTCTCTCTGGCTTTCCTTCTGGATCAACCCGGACGCGAGTGCTGCCAGAGTGCCCTGGGTTGG

ACGCGTACGCGGCCGCTCGAGCAGAAACTCATCTCAGAAGAGGATCTGGCAGCAAATGATATCCTGGATT
ACAAGGATGACGACGATAAGGTTTAA



[View online »](#)

Protein Sequence: >RC228238 representing NM_001166061
Red=Cloning site Green=Tags(s)

MKFLLTAFILISLWVEEAYSKEKSSKKGKGGKQYLCPSQQAEDLARVPANSTSNILNRLLVSYDPR
 IRPNFKGIPVDVVVNIIFINSGSIQETTMDYRVNIFLRQKWNDRPKLPDFRGSALTVDPMTYKCLWK
 PDLFFANEKSANFHDVTQENILLFIFRDGDLVSMRLSITLSCPLDLTLFPMDTQRCKMQLESFGYTTDD
 LRFIWSGDPVQLEKIALPQFDIKKEDIEYGNCTKYYKGTGYTCVEVIFTLRRQVGFYMMGVYAPTLII
 VVLSWLSFWINPDASAARVPLGW

TRTRPLEQKLISEEDLAANDILDYKDDDDKV

Chromatograms: https://cdn.origene.com/chromatograms/mk8050_g12.zip

Restriction Sites: SgfI-MluI

Cloning Scheme:



ACCN: NM_001166061

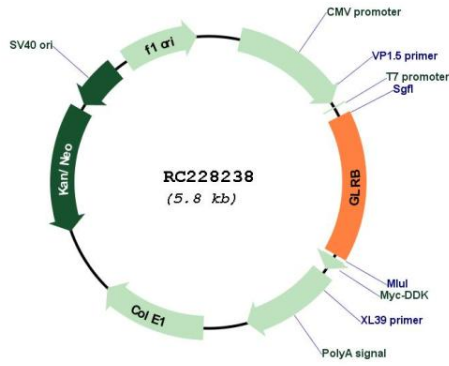
ORF Size: 909 bp

OTI Disclaimer: Due to the inherent nature of this plasmid, standard methods to replicate additional amounts of DNA in E. coli are highly likely to result in mutations and/or rearrangements. Therefore, OriGene does not guarantee the capability to replicate this plasmid DNA. Additional amounts of DNA can be purchased from OriGene with batch-specific, full-sequence verification at a reduced cost. Please contact our customer care team at custsupport@origene.com or by calling 301.340.3188 option 3 for pricing and delivery.

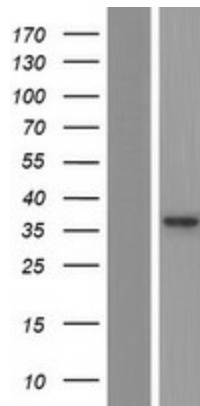
The molecular sequence of this clone aligns with the gene accession number as a point of reference only. However, individual transcript sequences of the same gene can differ through naturally occurring variations (e.g. polymorphisms), each with its own valid existence. This clone is substantially in agreement with the reference, but a complete review of all prevailing variants is recommended prior to use. [More info](#)

OTI Annotation:	This clone was engineered to express the complete ORF with an expression tag. Expression varies depending on the nature of the gene.
Components:	The ORF clone is ion-exchange column purified and shipped in a 2D barcoded Matrix tube containing 10ug of transfection-ready, dried plasmid DNA (reconstitute with 100 ul of water).
Reconstitution Method:	<ol style="list-style-type: none">1. Centrifuge at 5,000xg for 5min.2. Carefully open the tube and add 100ul of sterile water to dissolve the DNA.3. Close the tube and incubate for 10 minutes at room temperature.4. Briefly vortex the tube and then do a quick spin (less than 5000xg) to concentrate the liquid at the bottom.5. Store the suspended plasmid at -20°C. The DNA is stable for at least one year from date of shipping when stored at -20°C.
RefSeq:	<u>NM_001166061.1</u> , <u>NP_001159533.1</u>
RefSeq ORF:	912 bp
Locus ID:	2743
UniProt ID:	<u>P48167</u>
Cytogenetics:	4q32.1
Protein Families:	Druggable Genome, Ion Channels: Cys-loop Receptors, Transmembrane
Protein Pathways:	Neuroactive ligand-receptor interaction
MW:	34.94 kDa
Gene Summary:	This gene encodes the beta subunit of the glycine receptor, which is a pentamer composed of alpha and beta subunits. The receptor functions as a neurotransmitter-gated ion channel, which produces hyperpolarization via increased chloride conductance due to the binding of glycine to the receptor. Mutations in this gene cause startle disease, also known as hereditary hyperekplexia or congenital stiff-person syndrome, a disease characterized by muscular rigidity. Alternative splicing results in multiple transcript variants. [provided by RefSeq, Oct 2009]

Product images:



Circular map for RC228238



Western blot validation of overexpression lysate (Cat# [LY431266]) using anti-DDK antibody (Cat# [TA50011-100]). Left: Cell lysates from untransfected HEK293T cells; Right: Cell lysates from HEK293T cells transfected with RC228238 using transfection reagent MegaTran 2.0 (Cat# [TT210002]).