

## Product datasheet for **RC228229**

### Sex Hormone Binding Globulin (SHBG) (NM\_001146280) Human Tagged ORF Clone

#### Product data:

Product Type:	Expression Plasmids
Product Name:	Sex Hormone Binding Globulin (SHBG) (NM_001146280) Human Tagged ORF Clone
Tag:	Myc-DDK
Symbol:	Sex Hormone Binding Globulin
Synonyms:	ABP; SBP; TEBG
Mammalian Cell Selection:	Neomycin
Vector:	pCMV6-Entry (PS100001)
E. coli Selection:	Kanamycin (25 ug/mL)
ORF Nucleotide Sequence:	>RC228229 representing NM_001146280 Red=Cloning site Blue=ORF Green=Tags(s)

TTTGTAAATACGACTCACTATAGGGCGGCCGGAATTCGTCGACTGGATCCGGTACCGAGGAGATCTGCC  
GCC**CGATCGCC**

ATGGAGAGCAGAGGCCCACTGGCTACCTCGCGCCTGCTGCTGTTGCTGCTGTTGCTACTACTGCGTCACA  
CCCGCCAGGGATGGGCCCTGAGACCTGTTCTCCCCACCCAGAGTGCCACGACCCCTCCGGCTGTCCACCT  
CAGCAATGGCCAGGACAAGAGCCTATCGCTGTCATGACCTTTGACCTCACCAAGATCACAAAAACCTCC  
TCCTCCTTTGAGGTTGAACTGGGACCCAGAGGAGTGATTTTTATGGGGATACCAACCCTAAGGATG  
ACTGGTTTATGCTGGGACTTCGAGACGGCAGGCCTGAGATCCAATGCACAATCACTGGGCCAGCTTAC  
GGTGGGTGCTGGACCACGGCTGGATGATGGGAGATGGCACCAGGTGGAAGTCAAGATGGAGGGGACTCT  
GTGCTGCTGGAGGTGGATGGGGAGGAGGTGCTGCGCCTGAGACAGGTCTCTGGGCCCTGACCAGCAAAC  
GCCATCCCATCATGAGGATTGCGCTTGGGGGGCTGCTCTTCCCGCTTCCAACCTTCGGTTGCCGCTGGT  
TCCTGCCCTGGATGGCTGCCTGCGCCGGGATTCCTGGCTGGACAAACAGGCCGAGATCTCAGCATCTGCC  
CCCACTAGCCTCAGAAGCTGTGATGTAGAATCAAATCCCGGATATTTCTCCCTCCAGGGACTCAGGCAG  
AATTCAATCTCCGAGACATTCAGCCCTCATGCAGAGCCCTGGGCTTCTCTTTGGACCTGGGACTCAA  
GCAGGCAGCAGGCTCAGGCCACCTCCTTGCTCTTGGGACACCAGAGAACCATCTTGGCTCAGTCTCCAC  
CTCCAAGATCAAGAGAAGACTCTCCACCTCTTTTGGC

**ACGCGT**ACGCGGCCGCTCGAGCAGAACTCATCTCAGAAGAGGATCTGGCAGCAAATGATATCCTGGATT  
ACAAGGATGACGACGATAAGGTTTAA



[View online »](#)

**Protein Sequence:** >RC228229 representing NM\_001146280

Red=Cloning site Green=Tags(s)

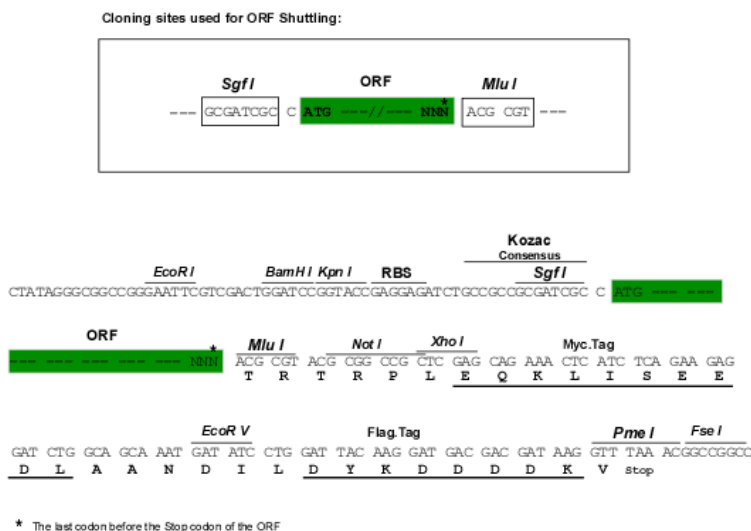
MESRGPLATSRLLLLLLLLLLRHTRQGWALRPVLPTQSAHDPPAVHLSNGPGQEPIAVMTFDLTKITKTS  
SSFEVRTWDEGVIFYGDTNPKDDWFMGLRDRPEIQLHNHWAQLTVGAGPRLDDGRWHQVEVKMEGDS  
VLLEVDGEEVLRRLRQVSGPLTSKRHPIMRIALGGLFPASNLRLPLVPALDGCRLRDSWLDKQAEISASA  
PTSLRSCDVESNPGIFLPPGTQAEFNLRDIPQPHAEPWAFSLDLGLKQAAGSGHLLALGTPENPSWLSLH  
LQDQEKTLPLFA

TRTRPLEQKLISEEDLAANDILDYKDDDDKV

**Chromatograms:** [https://cdn.origene.com/chromatograms/mk8050\\_b02.zip](https://cdn.origene.com/chromatograms/mk8050_b02.zip)

**Restriction Sites:** SgfI-MluI

**Cloning Scheme:**



**ACCN:** NM\_001146280

**ORF Size:** 879 bp

**OTI Disclaimer:** The molecular sequence of this clone aligns with the gene accession number as a point of reference only. However, individual transcript sequences of the same gene can differ through naturally occurring variations (e.g. polymorphisms), each with its own valid existence. This clone is substantially in agreement with the reference, but a complete review of all prevailing variants is recommended prior to use. [More info](#)

**OTI Annotation:** This clone was engineered to express the complete ORF with an expression tag. Expression varies depending on the nature of the gene.

**Components:** The ORF clone is ion-exchange column purified and shipped in a 2D barcoded Matrix tube containing 10ug of transfection-ready, dried plasmid DNA (reconstitute with 100 ul of water).

**Reconstitution Method:**

1. Centrifuge at 5,000xg for 5min.
2. Carefully open the tube and add 100ul of sterile water to dissolve the DNA.
3. Close the tube and incubate for 10 minutes at room temperature.
4. Briefly vortex the tube and then do a quick spin (less than 5000xg) to concentrate the liquid at the bottom.
5. Store the suspended plasmid at -20°C. The DNA is stable for at least one year from date of shipping when stored at -20°C.

**RefSeq:** [NM\\_001146280.3](#)

**RefSeq ORF:** 882 bp

**Locus ID:** 6462

**UniProt ID:** [P04278](#)

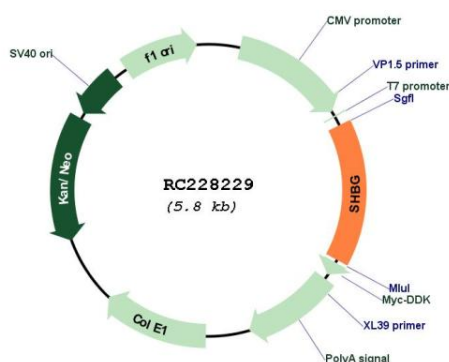
**Cytogenetics:** 17p13.1

**Protein Families:** Druggable Genome, Secreted Protein

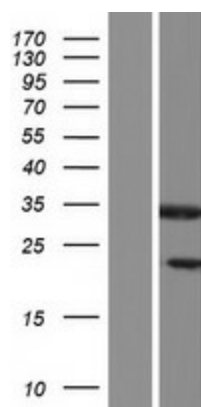
**MW:** 32.36 kDa

**Gene Summary:** This gene encodes a steroid binding protein that was first described as a plasma protein secreted by the liver but is now thought to participate in the regulation of steroid responses. The encoded protein transports androgens and estrogens in the blood, binding each steroid molecule as a dimer formed from identical or nearly identical monomers. Polymorphisms in this gene have been associated with polycystic ovary syndrome and type 2 diabetes mellitus. Alternative splicing results in multiple transcript variants. [provided by RefSeq, Jan 2014]

## Product images:



Circular map for RC228229



Western blot validation of overexpression lysate (Cat# [LY431257]) using anti-DDK antibody (Cat# [TA50011-100]). Left: Cell lysates from untransfected HEK293T cells; Right: Cell lysates from HEK293T cells transfected with RC228229 using transfection reagent MegaTran 2.0 (Cat# [TT210002]).