

Product datasheet for **RC228225**

ARL13A (NM_001162490) Human Tagged ORF Clone

Product data:

Product Type:	Expression Plasmids
Product Name:	ARL13A (NM_001162490) Human Tagged ORF Clone
Tag:	Myc-DDK
Symbol:	ARL13A
Synonyms:	ARL13; dj341D10.2
Mammalian Cell Selection:	Neomycin
Vector:	pCMV6-Entry (PS100001)
E. coli Selection:	Kanamycin (25 ug/mL)
ORF Nucleotide Sequence:	>RC228225 representing NM_001162490 Red=Cloning site Blue=ORF Green=Tags(s)

TTTTGTAATACGACTCACTATAGGGCGGCCGGAATTCGTCGACTGGATCCGGTACCGAGGAGATCTGCC
GCC**CGATCGCC**

ATGTTCCGGCTTTTGTCTCCTGCTGCTCTTGCCTAAGGACAACAGAAGAGACACGAAGGAATGTGACCA
TCCCTATCATTGGCTTGAACAACCTGGCAAACTGTTCTTGTGGAGGCATTCCAAAAATTACTCCAG
TAAGACAGACCATTGCATGAAATCGGAAGTACTACACTTTTGTAGATGAGTATGAACTTTCCATCTAT
GACCTGAATGGAGACCTGAAGGGCCGGGAAGCATGGCCAACTACTATGCACAGGCCCATGGCTTGTTT
TCGTCCTGGATCCAGTGACATAAGACGCATGCAGGAAGTGAAGATCATCTTAACACATCTGCTGTCCGA
TAAAAGAGTGGCAGGAAACCCATCTTAATTTAGCAAACAACAAGACAAGAAGAAAGCCCTCATGCC
TGTGATATTATTGACTATCTACTTCTAAAGAAGCTAGTGAAGAGAATAAGTGCCCATGCCGAGTAGAGC
CATGTTTCAGCCATCAGAAACCTTGAAGAAGAAACCATCAGCCCATAGTTGAAGGACTGCGCTGGCTATT
AGCTGTCAATGATACTTGCCAACACCCTACCTCGAGCATCTCAATCTCCAAGAATAACACAGGCTCT
GGAGAAAGATGCTCATCACACAGCTTCTCCACCAGAACAGGAATGTCAAAGGAGAAAAGACAGCATCTAG
AACAAATGCTCAATCGAAGCTAAGCCTCTAAAGTCAATCTACAGAAAGAAGGTACGAGATTATGGTCTAA
AAAGAATATGTCAGTAACATTTGCTTTAGATGAACCCATGAAAGAAGGTGAATGTTCTAGGAGAATGAGA
GCTCAGAATACTACGAAGCTTTGCTACAAT

ACGCGTACGCGGCCGCTCGAGCAGAAACTCATCTCAGAAGAGGATCTGGCAGCAAATGATATCCTGGATT
ACAAGGATGACGACGATAAGGTTTAA



[View online »](#)

Protein Sequence: >RC228225 representing NM_001162490
Red=Cloning site Green=Tags(s)

MFRLSSCCSCLRTTEETRRNVTIPIIGLNNSGKTVLVEAFQKLLPSKTDHCKMSELTTLLLDYELSIY
 DLNGDLKGREAWPNYYAQAHGLVFLDSSDIRRMQEVKIILTHLLSDKRVAGKPILILANKQDKKALMP
 CDIIDYLLKLVKENKPCRVEPCSAIRNLERRNHQPIVEGLRWLLAVIDTCQLPPTSSISISKNNNTGS
 GERCSSHSFSTRTGMSKEKRQHLEQCSIEAKPLKSILOKEGTRLWSKKNMSVTFALDEPMKEGECSSRRMR
 AQNTTKLCYN

TRTRPLEQKLISEEDLAANDILDYKDDDDKV

Chromatograms: https://cdn.origene.com/chromatograms/mk8049_h05.zip

Restriction Sites: SgfI-MluI

Cloning Scheme:



ACCN: NM_001162490

ORF Size: 870 bp

OTI Disclaimer: The molecular sequence of this clone aligns with the gene accession number as a point of reference only. However, individual transcript sequences of the same gene can differ through naturally occurring variations (e.g. polymorphisms), each with its own valid existence. This clone is substantially in agreement with the reference, but a complete review of all prevailing variants is recommended prior to use. [More info](#)

OTI Annotation: This clone was engineered to express the complete ORF with an expression tag. Expression varies depending on the nature of the gene.

Components: The ORF clone is ion-exchange column purified and shipped in a 2D barcoded Matrix tube containing 10ug of transfection-ready, dried plasmid DNA (reconstitute with 100 ul of water).

- Reconstitution Method:**
1. Centrifuge at 5,000xg for 5min.
 2. Carefully open the tube and add 100ul of sterile water to dissolve the DNA.
 3. Close the tube and incubate for 10 minutes at room temperature.
 4. Briefly vortex the tube and then do a quick spin (less than 5000xg) to concentrate the liquid at the bottom.
 5. Store the suspended plasmid at -20°C. The DNA is stable for at least one year from date of shipping when stored at -20°C.

RefSeq: [NM_001162490.1](#), [NP_001155962.1](#)

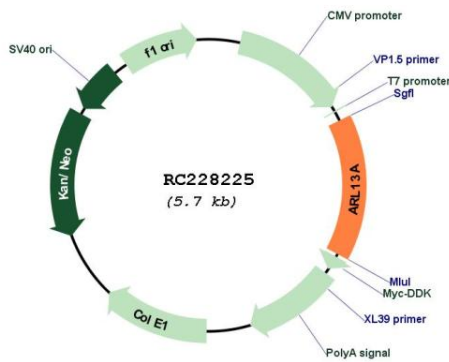
RefSeq ORF: 872 bp

Locus ID: 392509

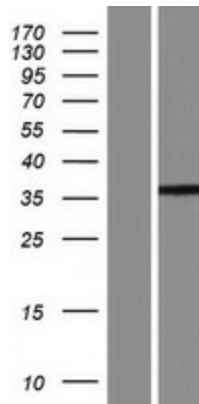
Cytogenetics: Xq22.1

MW: 32.8 kDa

Product images:



Circular map for RC228225



Western blot validation of overexpression lysate (Cat# [LY431253]) using anti-DDK antibody (Cat# [TA50011-100]). Left: Cell lysates from untransfected HEK293T cells; Right: Cell lysates from HEK293T cells transfected with RC228225 using transfection reagent MegaTran 2.0 (Cat# [TT210002]).