

## Product datasheet for **RC228209**

### **NPTN (NM\_001161364) Human Tagged ORF Clone**

#### Product data:

**Product Type:** Expression Plasmids  
**Product Name:** NPTN (NM\_001161364) Human Tagged ORF Clone  
**Tag:** Myc-DDK  
**Symbol:** NPTN  
**Synonyms:** GP55; GP65; np55; np65; SDFR1; SDR1  
**Mammalian Cell Selection:** Neomycin  
**Vector:** pCMV6-Entry (PS100001)  
**E. coli Selection:** Kanamycin (25 ug/mL)  
**ORF Nucleotide Sequence:** >RC228209 representing NM\_001161364  
**Red=Cloning site Blue=ORF Green=Tags(s)**

TTTTGTAATACGACTCACTATAGGGCGGCCGGAATTCGTCGACTGGATCCGGTACCGAGGAGATCTGCC  
GCC**CGGATCGCC**

ATGTCGGGTTTCGTCGCTGCCAGCGCCCTGGCCCTCTCGCTGTTGCTGGTCTCTGGCTCCCTCTCCCAG  
GGCCAGGCGCCGCTCAGAACGAGCCAAGGATTGTACCAGTGAAGAGGTCATTATTCGAGACAGCCCTGT  
TCTCCCTGTACCCTGCAGTGTAACCTCACCTCCAGCTCTCACACCCTTACATACAGCTACTGGACAAAG  
AATGGGGTGAACTGAGTGCCACTCGTAAGAATGCCAGCAACATGGAGTACAGGATCAATAAGCCGAGAG  
CTGAGGATTCAGGCGAATACCACTGCGTATATCACTTTGTCAGCGCTCCTAAAGCAAACGCCACCATTGA  
AGTGAAAGCCGCTCCTGACATCACTGGCCATAAACGGAGTGAGAACAAAGAATGAAGGGCAGGATGCCACT  
ATGATTGCAAGTCAGTTGGCTACCCCCACCCAGACTGGATATGGCGCAAGAAGGAGAACGGGATGCCCA  
TGGACATTGTCAATACCTCTGGCCGCTTCTTCATCATCAACAAGGAAAATTACACTGAGTTGAACATTGT  
GAACCTGCAGATCACGGAAGACCCTGGCGAGTATGAATGTAATGCCACCAACGCCATTGGCTCCGCTCT  
GTTGCTACTGTCTCAGGGTGGCGAGCCACCTGGCCCCACTCTGGCCTTTCTTGGGAATTCTGGCTGAAA  
TTATCATCCTTGTGGTGATCATTGTTGTGTATGAGAAGAGGAAGAGGCCAGATGAGGTTCTGACGCTGG  
ACCAATGAAAACCAACTTACCAACAATCACAAGATAAAAACTTGGCCAGAGAAACACAAAT

**ACGCGT**ACGCGGCCGCTCGAGCAGAAACTCATCTCAGAAGAGGATCTGGCAGCAAATGATATCCTGGATT  
ACAAGGATGACGACGATAAGGTTTAA



[View online »](#)

**Protein Sequence:** >RC228209 representing NM\_001161364  
 Red=Cloning site Green=Tags(s)

MSGSSLPSALALSLLLVSGSLLPGPGAQNEPRIVTSEEVIIRDSPVLPVTLQCNTLSSSHTLTYSYWTK  
 NGVELSATRKNASNMEYRINKPRAEDSGEYHCYVYHFVSAPKANATIEVKAAPDITGHKRSENKNEGQDAT  
 MYCKSVGYPHPDWIWRKKENGMPMDIVNTSGRFFIINKENYTELNIVNLQITEDPGEYECNATNAIGSAS  
 VVTVLRVRSHLAPLWPFLGILAEI IILVVIIIVVEKRRKPDEVPDAGPMKTNSTNNHKDKNLRQRNTN

TRTRPLEQKLISEEDLAANDILDYKDDDDKV

**Chromatograms:** [https://cdn.origene.com/chromatograms/mk8049\\_a01.zip](https://cdn.origene.com/chromatograms/mk8049_a01.zip)

**Restriction Sites:** SgfI-MluI

**Cloning Scheme:**

Cloning sites used for ORF Shuttling:



\* The last codon before the Stop codon of the ORF

**ACCN:** NM\_001161364

**ORF Size:** 834 bp

**OTI Disclaimer:** The molecular sequence of this clone aligns with the gene accession number as a point of reference only. However, individual transcript sequences of the same gene can differ through naturally occurring variations (e.g. polymorphisms), each with its own valid existence. This clone is substantially in agreement with the reference, but a complete review of all prevailing variants is recommended prior to use. [More info](#)

**OTI Annotation:** This clone was engineered to express the complete ORF with an expression tag. Expression varies depending on the nature of the gene.

**Components:** The ORF clone is ion-exchange column purified and shipped in a 2D barcoded Matrix tube containing 10ug of transfection-ready, dried plasmid DNA (reconstitute with 100 ul of water).

**Reconstitution Method:**

1. Centrifuge at 5,000xg for 5min.
2. Carefully open the tube and add 100ul of sterile water to dissolve the DNA.
3. Close the tube and incubate for 10 minutes at room temperature.
4. Briefly vortex the tube and then do a quick spin (less than 5000xg) to concentrate the liquid at the bottom.
5. Store the suspended plasmid at -20°C. The DNA is stable for at least one year from date of shipping when stored at -20°C.

**RefSeq:** [NM\\_001161364.2](#)

**RefSeq ORF:** 837 bp

**Locus ID:** 27020

**UniProt ID:** [Q9Y639](#)

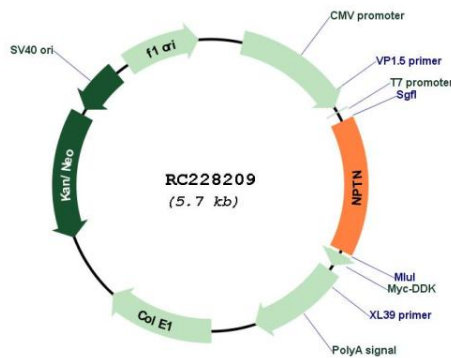
**Cytogenetics:** 15q24.1

**Protein Families:** Druggable Genome, Transmembrane

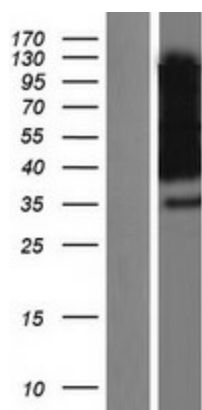
**MW:** 30.84 kDa

**Gene Summary:** This gene encodes a type I transmembrane protein belonging to the Ig superfamily. The protein is believed to be involved in cell-cell interactions or cell-substrate interactions. Alternative splicing results in multiple transcript variants. [provided by RefSeq, May 2009]

**Product images:**



Circular map for RC228209



Western blot validation of overexpression lysate (Cat# [LY431237]) using anti-DDK antibody (Cat# [TA50011-100]). Left: Cell lysates from untransfected HEK293T cells; Right: Cell lysates from HEK293T cells transfected with RC228209 using transfection reagent MegaTran 2.0 (Cat# [TT210002]).