

Product datasheet for **RC228208**

PIGX (NM_001166304) Human Tagged ORF Clone

Product data:

Product Type:	Expression Plasmids
Product Name:	PIGX (NM_001166304) Human Tagged ORF Clone
Tag:	Myc-DDK
Symbol:	PIGX
Synonyms:	PIG-X
Mammalian Cell Selection:	Neomycin
Vector:	pCMV6-Entry (PS100001)
E. coli Selection:	Kanamycin (25 ug/mL)
ORF Nucleotide Sequence:	>RC228208 representing NM_001166304 Red=Cloning site Blue=ORF Green=Tags(s)

TTTTGTAATACGACTCACTATAGGGCGGCCGGAATTCGTCGACTGGATCCGGTACCGAGGAGATCTGCC
GCC**CGGATCGCC**

CTGGATCCGGTACCGAGGAGATCTGCCGCCGATCGCCCTGGCGGCTCGGGTGGCGGGTTCCGGCGG
CCGCCTGGCTGCTCCTCGGGCGGCGACCGGGCTCACGCGGGGCCCGCCGCGCCTTACCGCCGCGCG
CTCTGACGCCGGCATAAGGGCCATGTGTTCTGAAATATTTTGAGGCAAGAAGTTTGAAGATGGTTTC
CACAGAGACCTTTAATCAAAGTGAAGTTGGGAAAGCATTGAGGACTGCACACCTGCCGTCTCTTAA
TTAAACAGGACATTCCTGCAGGACTTTATGTGGATCCGTATGAGTTGGCTTCATTACGAGAGAGAAACAT
AACAGAGGCAGTGATGGTTTCAGAAAATTTGATATAGAGGCCCTAACTATTTGTCCAAGGAGTCTGAA
GTTCTCATTTATGCCAGACGAGATTCACAGTGCATTGACTGTTTTCAAGCCTTTTGCCTGTGCACTGCC
GCTATCATCGGCCGCACAGTGAAGATGGAGAAGCCTCGATTGTGGTCAATAACCCAGATTTGTTGATGTT
TTGTGACCAAGCTGGCTCCAGAAGAATGATCAGATTCGGTTTGATTCTTTGACAAAATATAGAGTTC
CCGATTTTGAATGCTGGGCTCACTCAGAAGTGGCAGCCCTTGTGCTTTGGAGAATGAGGATATCTGCC
AATGGAACAAGATGAAGTATAAATCAGTATATAAGAATGTGATTCTACAAGTTCAGTGGGACTGACTGT
ACATACCTCTCTAGTATGTTCTGTGACTGCTCATTACAATCCTGTGCTCTACATTGATCCTTGTAGCA
GTTTTCAAATATGGCCATTTTCCCTA

ACGCGTACGCGGCCGCTCGAGCAGAAACTCATCTCAGAAGAGGATCTGGCAGCAAATGATATCCTGGATT
ACAAGGATGACGACGATAAGGTTTAA



[View online »](#)

Protein Sequence: >RC228208 representing NM_001166304
Red=Cloning site Green=Tags(s)

LDPVPRRSAAAIALAARVAAVRAAAWLLLGAATGLTRGPAAAF TAARSDAGIRAMCSEIILRQEV LKDG F
 HRDLLIKVKFGESIEDLHTCRLLIKQDIPAGLYVDPYELASLRERNITEAVMVSENF DIEAPNYLSKESE
 VLIYARRDSQCIDCFQAF LPVHCRYHRPHSE DGEASIVVNNPDL LMFCDQAGSRMRFRFDSFKTIEF
 PILKCAHSEVAAPCALENEDICQWNKMKYKSVYKNVILQVPVGLTVHTSLVCSVTLLITILCSTLILVA
 VFKYGHFSL

TRTRPLEQKLISEEDLAANDILDYKDDDDKV

Chromatograms: https://cdn.origene.com/chromatograms/mk8048_g10.zip

Restriction Sites: SgfI-MluI

Cloning Scheme:



ACCN: NM_001166304

ORF Size: 867 bp

OTI Disclaimer: The molecular sequence of this clone aligns with the gene accession number as a point of reference only. However, individual transcript sequences of the same gene can differ through naturally occurring variations (e.g. polymorphisms), each with its own valid existence. This clone is substantially in agreement with the reference, but a complete review of all prevailing variants is recommended prior to use. [More info](#)

OTI Annotation: This clone was engineered to express the complete ORF with an expression tag. Expression varies depending on the nature of the gene.

Components: The ORF clone is ion-exchange column purified and shipped in a 2D barcoded Matrix tube containing 10ug of transfection-ready, dried plasmid DNA (reconstitute with 100 ul of water).

Reconstitution Method:

1. Centrifuge at 5,000xg for 5min.
2. Carefully open the tube and add 100ul of sterile water to dissolve the DNA.
3. Close the tube and incubate for 10 minutes at room temperature.
4. Briefly vortex the tube and then do a quick spin (less than 5000xg) to concentrate the liquid at the bottom.
5. Store the suspended plasmid at -20°C. The DNA is stable for at least one year from date of shipping when stored at -20°C.

RefSeq ORF: 831 bp

Locus ID: 54965

UniProt ID: [Q8TBF5](#)

Cytogenetics: 3q29

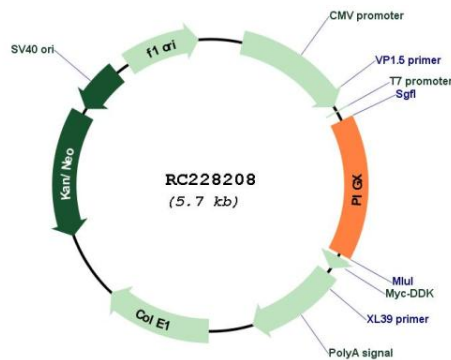
Protein Families: Transmembrane

Protein Pathways: Glycosylphosphatidylinositol(GPI)-anchor biosynthesis, Metabolic pathways

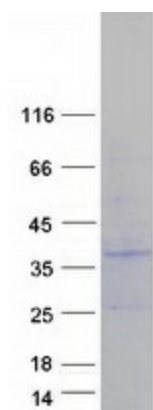
MW: 32.27 kDa

Gene Summary: This gene encodes a type I transmembrane protein in the endoplasmic reticulum (ER). The protein is an essential component of glycosylphosphatidylinositol-mannosyltransferase I, which transfers the first of the four mannoses in the GPI-anchor precursors during GPI-anchor biosynthesis. Studies in rat indicate that the protein is translated from a non-AUG translation initiation site. Alternative splicing results in multiple transcript variants. [provided by RefSeq, Oct 2009]

Product images:



Circular map for RC228208



Coomassie blue staining of purified PIGX protein (Cat# [TP328208]). The protein was produced from HEK293T cells transfected with PIGX cDNA clone (Cat# RC228208) using MegaTran 2.0 (Cat# [TT210002]).