

Product datasheet for **RC228181**

SVH (ARMC10) (NM_001161012) Human Tagged ORF Clone

Product data:

Product Type: Expression Plasmids
Product Name: SVH (ARMC10) (NM_001161012) Human Tagged ORF Clone
Tag: Myc-DDK
Symbol: SVH
Synonyms: PNAS-112; PNAS112; PSEC0198; SVH
Mammalian Cell Selection: Neomycin
Vector: pCMV6-Entry (PS100001)
E. coli Selection: Kanamycin (25 ug/mL)
ORF Nucleotide Sequence: >RC228181 representing NM_001161012
Red=Cloning site Blue=ORF Green=Tags(s)

TTTTGTAATACGACTCACTATAGGGCGGCCGGGAATTCGTCGACTGGATCCGGTACCGAGGAGATCTGCC
GCC**CGATCGCC**

ATGGGTGGCCCCGGGGCGGGCTGGGTGGCGGGCCCTGCTGCTCGGCGGGGCGCCTGCTACTGCA
TTTACAGGCTGACCCGGGTGCGCGGGGGCGACCGGAGCTCGGGATACGCTCTTCGAAGTCCGCAGA
AGACTTAAGTATGATGATGATGATGTTCTAAATGCTGAACAACTTCAGAACTCCTTTACCTGCTG
GAGTCAACGGAGGATCCTGTAATTATTGAAAGAGCTTTGATTACTTTGGGTAACAATGCAGCCTTTTCAG
TTAACCAAGCTATTATTCGTGAATTGGGTGGTATTCCAATTGTTGCAAACAAAATCAACCATTCCAACCA
GAGTATTAAGAGAAAGCTTTAAATGCACTAAATAACCTGAGTGTGAATGTTGAAAATCAAATCAAGATA
AAGGTGCAAGTTTTGAACTGCTTTTGAATTTGTCTGAAAATCCAGCCATGACAGAAGGACTTCTCCGTG
CCCAAGTGGATTCATCATTCTTTCCCTTTATGACAGCCACGTAGCAAAGGAGATTCTTCTTCGAGTACT
TACGCTATTTTCAGAAATAAAGAAGTGCCTCAAATAGAAGGCCATTTAGCTGTGCAGCCTACTTTCACT
GAAGGTTTCATTGTTTTCTGTTACATGGAGAAGAATGTGCCAGAAAATAAGAGCTTTAGTTGATCACC
ATGATGCAGAGGTGAAGGAAAAGTTGTAACAATAATACCCAAAATC

ACGCGTACGCGGCCGCTCGAGCAGAACTCATCTCAGAAGAGGATCTGGCAGCAAATGATATCCTGGATT
ACAAGGATGACGACGATAAGGTTTAA



[View online »](#)

Protein Sequence: >RC228181 representing NM_001161012
 Red=Cloning site Green=Tags(s)

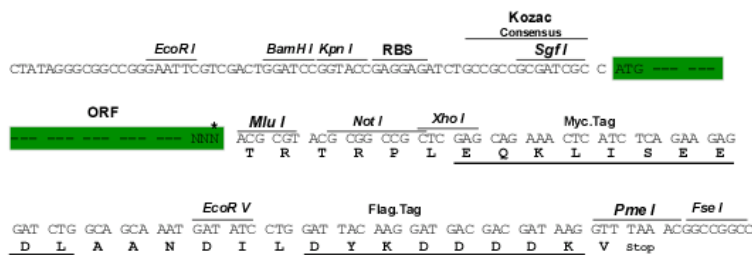
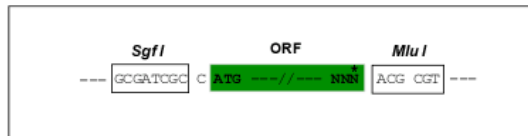
MGGPRGAGWVAAGLLLGAGACYCIYRLTRGRRRGDRELGIRSSKSAEDLTDGSYDDVLNAEQLQKLLYLL
 ESTEDPVIIERALITLGNNAAFVNQAIIRELGGIPIVANKINHSNQSISKEKALNALNNLSVNVENQIKI
 KVQVLKLLLNLSNPAMTEGLLRAQVDSFSLYDHSVAKIILLRVLTLFQNIKCLKIEGHLAVQPTFT
 EGSLFLLHGEECAQKIRALVDHDDAEVKEKVVTIIPKI

TRTRPLEQKLISEEDLAANDILDYKDDDDKV

Restriction Sites: Sgfl-MluI

Cloning Scheme:

Cloning sites used for ORF Shuttling:



* The last codon before the Stop codon of the ORF

ACCN: NM_001161012

ORF Size: 747 bp

OTI Disclaimer: The molecular sequence of this clone aligns with the gene accession number as a point of reference only. However, individual transcript sequences of the same gene can differ through naturally occurring variations (e.g. polymorphisms), each with its own valid existence. This clone is substantially in agreement with the reference, but a complete review of all prevailing variants is recommended prior to use. [More info](#)

OTI Annotation: This clone was engineered to express the complete ORF with an expression tag. Expression varies depending on the nature of the gene.

Components: The ORF clone is ion-exchange column purified and shipped in a 2D barcoded Matrix tube containing 10ug of transfection-ready, dried plasmid DNA (reconstitute with 100 ul of water).

Reconstitution Method:

1. Centrifuge at 5,000xg for 5min.
2. Carefully open the tube and add 100ul of sterile water to dissolve the DNA.
3. Close the tube and incubate for 10 minutes at room temperature.
4. Briefly vortex the tube and then do a quick spin (less than 5000xg) to concentrate the liquid at the bottom.
5. Store the suspended plasmid at -20°C. The DNA is stable for at least one year from date of shipping when stored at -20°C.

RefSeq: [NM_001161012.3](#)

RefSeq Size: 2369 bp

RefSeq ORF: 750 bp

Locus ID: 83787

UniProt ID: [Q8N2F6](#)

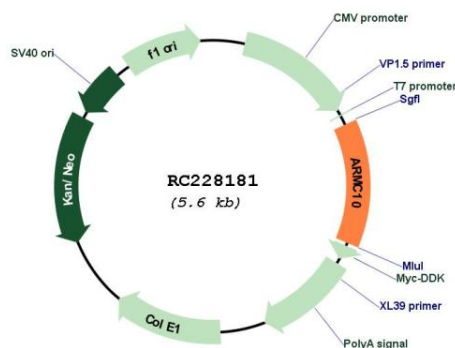
Cytogenetics: 7q22.1

Protein Families: Transmembrane

MW: 27.4 kDa

Gene Summary: This gene encodes a protein that contains an armadillo repeat and transmembrane domain. The encoded protein decreases the transcriptional activity of the tumor suppressor protein p53 through direct interaction with the DNA-binding domain of p53, and may play a role in cell growth and survival. Upregulation of this gene may play a role in hepatocellular carcinoma. Alternatively spliced transcript variants encoding multiple isoforms have been observed for this gene, and a pseudogene of this gene is located on the long arm of chromosome 3. [provided by RefSeq, Sep 2011]

Product images:



Circular map for RC228181