

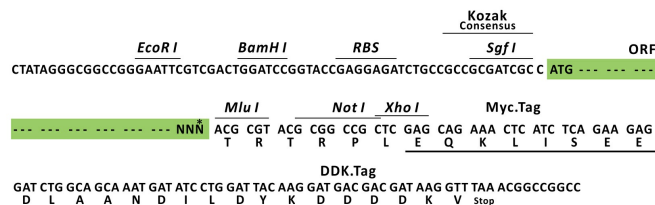
Product datasheet for RC228166L1

Class A basic helix loop helix protein 9 (BHLHA9) (NM_001164405) Human Tagged Lenti ORF Clone

Product data:

Product Type:	Expression Plasmids
Product Name:	Class A basic helix loop helix protein 9 (BHLHA9) (NM_001164405) Human Tagged Lenti ORF Clone
Tag:	Myc-DDK
Symbol:	Class A basic helix loop helix protein 9
Synonyms:	BHLHF42; CCSPD
Mammalian Cell Selection:	None
Vector:	pLenti-C-Myc-DDK (PS100064)
E. coli Selection:	Chloramphenicol (34 ug/mL)
ORF Nucleotide Sequence:	The ORF insert of this clone is exactly the same as(RC228166).
Restriction Sites:	Sgfl-MluI
Cloning Scheme:	

Cloning sites used for ORF Shuttling:



* The last codon before the Stop codon of the ORF.

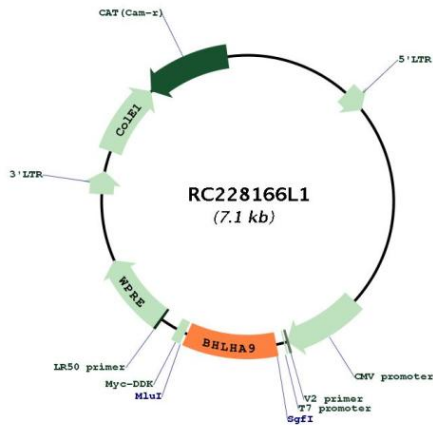
ACCN: NM_001164405



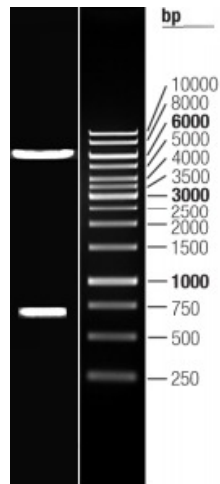
[View online »](#)

ORF Size:	705 bp
OTI Disclaimer:	The molecular sequence of this clone aligns with the gene accession number as a point of reference only. However, individual transcript sequences of the same gene can differ through naturally occurring variations (e.g. polymorphisms), each with its own valid existence. This clone is substantially in agreement with the reference, but a complete review of all prevailing variants is recommended prior to use. More info
OTI Annotation:	This clone was engineered to express the complete ORF with an expression tag. Expression varies depending on the nature of the gene.
Components:	The ORF clone is ion-exchange column purified and shipped in a 2D barcoded Matrix tube containing 10ug of transfection-ready, dried plasmid DNA (reconstitute with 100 ul of water).
Reconstitution Method:	<ol style="list-style-type: none">1. Centrifuge at 5,000xg for 5min.2. Carefully open the tube and add 100ul of sterile water to dissolve the DNA.3. Close the tube and incubate for 10 minutes at room temperature.4. Briefly vortex the tube and then do a quick spin (less than 5000xg) to concentrate the liquid at the bottom.5. Store the suspended plasmid at -20°C. The DNA is stable for at least one year from date of shipping when stored at -20°C.
RefSeq:	NM_001164405.1
RefSeq ORF:	708 bp
Locus ID:	727857
UniProt ID:	Q7RTU4
Cytogenetics:	17p13.3
MW:	24 kDa
Gene Summary:	This gene is a member of the basic helix-loop-helix family. The encoded protein is a transcription factor involved in limb development. Mutations in this gene have been associated with mesoaxial synostotic syndactyly Malik-Percin type (MSSD). Copy number variation of a locus containing this gene has been linked to a form of split-hand/foot malformation with long bone deficiency (SHFLD3). [provided by RefSeq, Mar 2015]

Product images:



Circular map for RC228166L1



Double digestion of RC228166L1 using SgfI and MluI