

Product datasheet for **RC228152**

ANKRD66 (NM_001162435) Human Tagged ORF Clone

Product data:

Product Type: Expression Plasmids
Product Name: ANKRD66 (NM_001162435) Human Tagged ORF Clone
Tag: Myc-DDK
Symbol: ANKRD66
Mammalian Cell Selection: Neomycin
Vector: pCMV6-Entry (PS100001)
E. coli Selection: Kanamycin (25 ug/mL)
ORF Nucleotide Sequence: >RC228152 representing NM_001162435
Red=Cloning site Blue=ORF Green=Tags(s)

TTTTGTAATACGACTCACTATAGGGCGGCCGGAATTCGTCGACTGGATCCGGTACCGAGGAGATCTGCC
GCC**CGATCGCC**

ATGCACTCACCTGGAGGGCTTACCACAACAAAGATGGCCGGACCCCTGCCAGAGTTTCAGATTCTTTGT
TTTCTGCCATGGAATTGGCCAAAATGTCAGACATGACAAAGCTTCACCAAGCTGTGGCTGCAGGAGACTA
CAGCTTAGTGAAGAAGATTTTGAAGAAAGTCTCTGTGACCCAACTACAAGATGTAGACTGGAATGAC
CGGACCCCACTTCACTGGGCTGCAATCAAAGGGCAAATGGAGGTGATACGGCTCCTGATAGAATATGGAG
CCAGCCCTGCCTGGTTACTAGTGTGGGCTGGACCCAGCTCATTTTGCAGCAGAAGCAGGCCACTGAA
TATACTAAAACCTCCATGCATTGCACGCTGCCATCGACGCCCTGACTTCTTTGGAGACACACCGAAG
AGGATTGCACAGATCTATGGACAGAAAGCCTGTGTGGCATTCTTGAAAAAGGCAGAGCCCGAGTGCCAGG
ACCACCGTTGCGCTGCCAGCAGAAAGGGCTGCCTCTGGATGAGCGTGATGAAGACTGGGATGCCAAGAA
AAGGGAGCTGGAGCTGTCTTCTTCCCTAAATCAAACATGAATAAAAAGAATAAGAAAAGTCGAGGC
CCCACCAGGCCAGCAATACCAAGGGGAGGAGTA

ACGCGTACGCGGCCGCTCGAGCAGAACTCATCTCAGAAGAGGATCTGGCAGCAAATGATATCTGGATT
ACAAGGATGACGACGATAAGGTTTAA

Protein Sequence: >RC228152 representing NM_001162435
Red=Cloning site Green=Tags(s)

MHSPGGLTTTKMAGPLPRVSDSLFSAMELAKMSDMTKLHQAVAAGDYSLVKKILKKGLCDPNYKDVDWND
RTPLHWAAIKQMEVIRLLIEYGARPLVTSVGWTPAHFAAEAGHLNILKTLHALHAAIDAPDFGDTPK
RIAQIYGQKACVAFLEKAEPECQDHRCAAQQKGLPLDERDEDWDAKKRELELSLPSLNQNMNKKKSRG
PTRPSNTKGRV

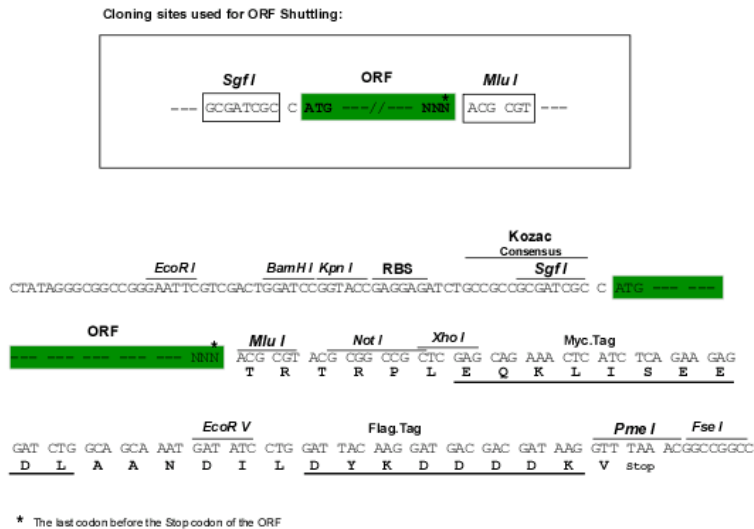
TRTRPLEQKLISEEDLAANDILDYKDDDDKV



Chromatograms: https://cdn.origene.com/chromatograms/mk8039_a06.zip

Restriction Sites: SgfI-MluI

Cloning Scheme:



ACCN: NM_001162435

ORF Size: 666 bp

OTI Disclaimer: The molecular sequence of this clone aligns with the gene accession number as a point of reference only. However, individual transcript sequences of the same gene can differ through naturally occurring variations (e.g. polymorphisms), each with its own valid existence. This clone is substantially in agreement with the reference, but a complete review of all prevailing variants is recommended prior to use. [More info](#)

OTI Annotation: This clone was engineered to express the complete ORF with an expression tag. Expression varies depending on the nature of the gene.

Components: The ORF clone is ion-exchange column purified and shipped in a 2D barcoded Matrix tube containing 10ug of transfection-ready, dried plasmid DNA (reconstitute with 100 ul of water).

Reconstitution Method:

1. Centrifuge at 5,000xg for 5min.
2. Carefully open the tube and add 100ul of sterile water to dissolve the DNA.
3. Close the tube and incubate for 10 minutes at room temperature.
4. Briefly vortex the tube and then do a quick spin (less than 5000xg) to concentrate the liquid at the bottom.
5. Store the suspended plasmid at -20°C. The DNA is stable for at least one year from date of shipping when stored at -20°C.

RefSeq: [NM_001162435.1](#), [NP_001155907.1](#)

RefSeq ORF: 591 bp

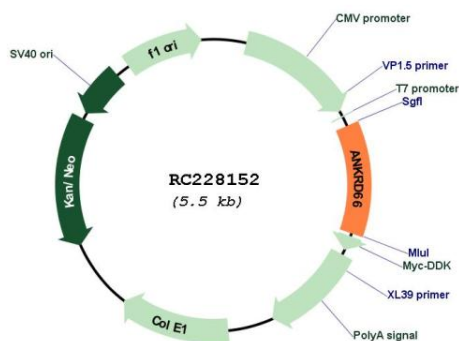
Locus ID: 100287718

UniProt ID: [B4E2M5](#)

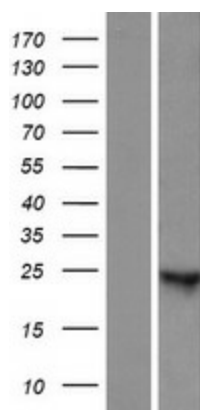
Cytogenetics: 6p12.3

MW: 24.5 kDa

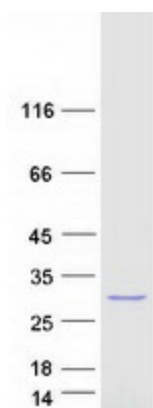
Product images:



Circular map for RC228152



Western blot validation of overexpression lysate (Cat# [LY431180]) using anti-DDK antibody (Cat# [TA50011-100]). Left: Cell lysates from untransfected HEK293T cells; Right: Cell lysates from HEK293T cells transfected with RC228152 using transfection reagent MegaTran 2.0 (Cat# [TT210002]).



Coomassie blue staining of purified ANKRD66 protein (Cat# [TP328152]). The protein was produced from HEK293T cells transfected with ANKRD66 cDNA clone (Cat# RC228152) using MegaTran 2.0 (Cat# [TT210002]).