

Product datasheet for **RC228151**

MS4A12 (NM_001164470) Human Tagged ORF Clone

Product data:

Product Type: Expression Plasmids
Product Name: MS4A12 (NM_001164470) Human Tagged ORF Clone
Tag: Myc-DDK
Symbol: MS4A12
Synonyms: Ms4a10
Mammalian Cell Selection: Neomycin
Vector: pCMV6-Entry (PS100001)
E. coli Selection: Kanamycin (25 ug/mL)
ORF Nucleotide Sequence: >RC228151 representing NM_001164470
Red=Cloning site Blue=ORF Green=Tags(s)

TTTTGTAATACGACTCACTATAGGGCGGCCGGAATTCGTCGACTGGATCCGGTACCGAGGAGATCTGCC
GCC**CGATCGCC**

ATGATGTCATCCAAGCCAACAAGCCATGCTGAAGTAAATGAAACCATACCCAACCCTTACCCACCAAGCA
GCTTTATGGCTCCTGGATTTCAACAGCCTCTGGGTTCAATCAACTAGAAAACCAAGCTCAGGGTGCTCA
GCGTGCTCAGCCCTACGGCATCACATCTCCGGGAATCTTTGCTAGCAGTCAACCGGGTCAAGGAAATATA
CAAATGATAAATCCAAGTGTGGGAACAGCAGTAATGAACTTTAAAGAAGAAGCAAAGGCACTAGGGTTTA
TTATCTCTGGCTCTCTCTGTGTGCAGCATCCAAGGAGCTTCCCGTTGTCTGGTAAAGGCAGCCTGGG
AATGAACATTGTTAGTTCTATCTTGGCCTTCATTGGAGTGATTCTGCTGCTGGTGGATATGTGCATCAAT
GGGGTAGCTGGCCAAGACTACTGGGCCGTGCTTTCTGGAAAAGGCATTTTCAGCCACGCTGATGATCTTCT
CCCTCTTGGAGTTCTTCGTAGCTTGTGCCACAGCCATTTTGCCAACCAAGCAAACCAACCAACCAATAT
GTCTGTCTGGTTATTCCAATATGTATGAAAGCAACCCTGTGACACCAGCGTCTTCTTCAGCTCCTCCC
AGATGCAACAACACTACTCAGCTAATGCCCTAAA

ACGCGTACGCGGCCGCTCGAGCAGAAACTCATCTCAGAAGAGGATCTGGCAGCAAATGATATCCTGGATT
ACAAGGATGACGACGATAAGGTTTAA



[View online »](#)

Reconstitution Method:

1. Centrifuge at 5,000xg for 5min.
2. Carefully open the tube and add 100ul of sterile water to dissolve the DNA.
3. Close the tube and incubate for 10 minutes at room temperature.
4. Briefly vortex the tube and then do a quick spin (less than 5000xg) to concentrate the liquid at the bottom.
5. Store the suspended plasmid at -20°C. The DNA is stable for at least one year from date of shipping when stored at -20°C.

RefSeq: [NM_001164470.1](#), [NP_001157942.1](#)

RefSeq ORF: 666 bp

Locus ID: 54860

UniProt ID: [Q9NXJ0](#)

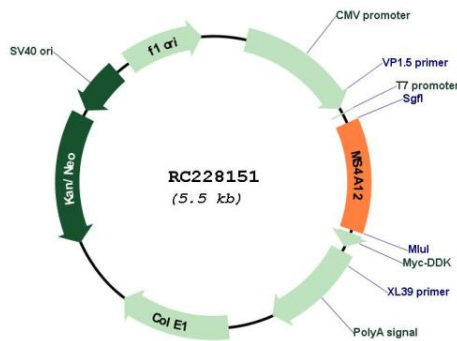
Cytogenetics: 11q12.2

Protein Families: Druggable Genome, Transmembrane

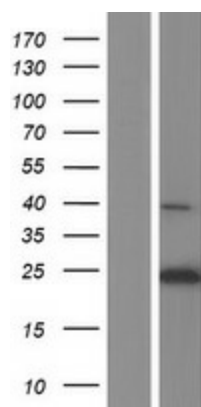
MW: 23 kDa

Gene Summary: The protein encoded by this gene is a cell surface protein found primarily in the apical membrane of colonocytes. Silencing of this gene in colon cancer cells inhibits the proliferation, cell motility, and chemotactic invasion of cells. This gene is part of a cluster of similar genes found on chromosome 11. Two transcript variants encoding different isoforms have been found for this gene. [provided by RefSeq, Aug 2009]

Product images:



Circular map for RC228151



Western blot validation of overexpression lysate (Cat# [LY431179]) using anti-DDK antibody (Cat# [TA50011-100]). Left: Cell lysates from untransfected HEK293T cells; Right: Cell lysates from HEK293T cells transfected with RC228151 using transfection reagent MegaTran 2.0 (Cat# [TT210002]).