

Product datasheet for **RC228150**

RNF222 (NM_001146684) Human Tagged ORF Clone

Product data:

Product Type: Expression Plasmids
Product Name: RNF222 (NM_001146684) Human Tagged ORF Clone
Tag: Myc-DDK
Symbol: RNF222
Mammalian Cell Selection: Neomycin
Vector: pCMV6-Entry (PS100001)
E. coli Selection: Kanamycin (25 ug/mL)
ORF Nucleotide Sequence: >RC228150 representing NM_001146684
 Red=Cloning site Blue=ORF Green=Tags(s)

TTTTGTAATACGACTCACTATAGGGCGGCCGGAATTCGTCGACTGGATCCGGTACCGAGGAGATCTGCC
 GCC**CGATCGCC**

ATGTCAGAAGGGGAGAGCAAGGACAGCTCGGGCAGTGAGTGCCCCGTGTGCTATGAGAAGTTCGGGACC
 TGGAGGGCGCCAGCCGGACGCTGAGCTGTGGCCATGTGTTCTGCCATGACTGCCTGGTCAAGTACCTGCT
 GTCCACCCCGCTGGATGGCAGGTCCAGAGGACCCTGGTCTGCCCATCTGCCGTACGTACATTCCTC
 AGCAAGAAGAGCTCCCGCTGGCCCTCCATGCTGGACAAGAGCTCCAGACGCTGGCTGTGCCCGTGGGCC
 TGCCCTCCGTGCCCCACTGGACAGCTGGGCCACAAAACCCCTGGCCGCTCCTCCCTGCCCTGGAG
 GCCACCTCCAGGCCAGGCCAGGCCAGGCCAGGCCAGGCCAGGCCAGGCCAGGCCAGCTCCCCCTGGACCTGCTG
 CCCAGCCTGCCCGGGAGTCACAGATCTTTGTCATCAGCCGCCACGGGATGCCCTGGGGGAGCAGGACA
 GCGTGCTGCCCGCCGACGCTGGCAGAGCTCTCGGAGGCCTCCCTGGCGCCCGCTCCGCCCGCCTT
 CTGCTGCCGATCGCGGCCCTGCTGCTCATCAGCTCATCGTGTGGTGGCCGTGGTGGCCGCCATCCTG
 CCCTGGGTGCTGCTGGTGGGAAGCAGGCG

ACGCGTACGCGGCCGCTCGAGCAGAACTCATCTCAGAAGAGGATCTGGCAGCAATGATATCCTGGATT
 ACAAGGATGACGACGATAAGGTTTAA

Protein Sequence: >RC228150 representing NM_001146684
 Red=Cloning site Green=Tags(s)

MSEGESKDSSGSECPVCYEKFRDLEASRTLSCGHVFDHCLVKYLLSTRVDGQVQRTLVCPICRYVTFLL
 SKKSSRWPSMLDKSSQTLAVPVGLPSVPPPLDSLGHNTPLAASSPAWRPPPGQARPPGSPGQSAQLPLDLL
 PSLPRESQIFVISRHGMPLGEQDSVLPRLSLAELSEASLAPRSARAFCCRSRALLLITLIAVVAVVAAIL
 PWLLVVRKQA

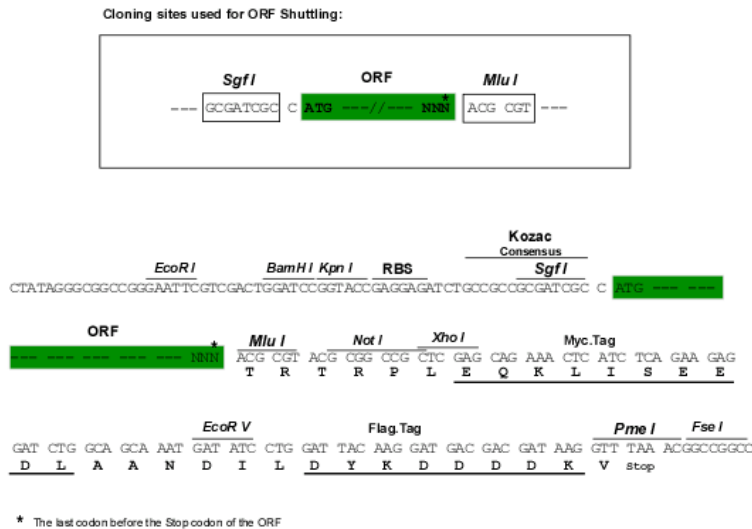
TRTRPLEQKLISEEDLAANDILDYKDDDDDKV



Chromatograms: https://cdn.origene.com/chromatograms/mk8006_h06.zip

Restriction Sites: SgfI-MluI

Cloning Scheme:



ACCN: NM_001146684

ORF Size: 660 bp

OTI Disclaimer: The molecular sequence of this clone aligns with the gene accession number as a point of reference only. However, individual transcript sequences of the same gene can differ through naturally occurring variations (e.g. polymorphisms), each with its own valid existence. This clone is substantially in agreement with the reference, but a complete review of all prevailing variants is recommended prior to use. [More info](#)

OTI Annotation: This clone was engineered to express the complete ORF with an expression tag. Expression varies depending on the nature of the gene.

Components: The ORF clone is ion-exchange column purified and shipped in a 2D barcoded Matrix tube containing 10ug of transfection-ready, dried plasmid DNA (reconstitute with 100 ul of water).

Reconstitution Method:

1. Centrifuge at 5,000xg for 5min.
2. Carefully open the tube and add 100ul of sterile water to dissolve the DNA.
3. Close the tube and incubate for 10 minutes at room temperature.
4. Briefly vortex the tube and then do a quick spin (less than 5000xg) to concentrate the liquid at the bottom.
5. Store the suspended plasmid at -20°C. The DNA is stable for at least one year from date of shipping when stored at -20°C.

RefSeq: [NM_001146684.3](#)

RefSeq ORF: 663 bp

Locus ID: 643904

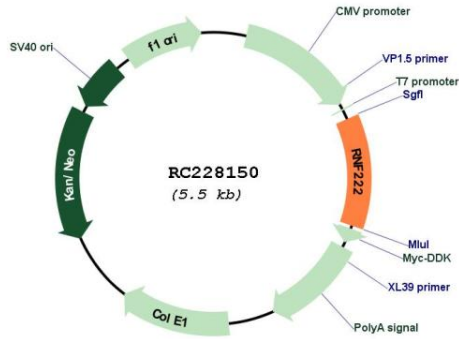
UniProt ID: [A6NCQ9](#)

Cytogenetics: 17p13.1

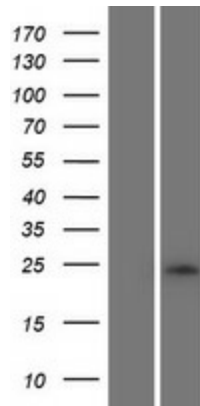
Protein Families: Transmembrane

MW: 23.6 kDa

Product images:



Circular map for RC228150



Western blot validation of overexpression lysate (Cat# [LY431178]) using anti-DDK antibody (Cat# [TA50011-100]). Left: Cell lysates from untransfected HEK293T cells; Right: Cell lysates from HEK293T cells transfected with RC228150 using transfection reagent MegaTran 2.0 (Cat# [TT210002]).