

Product datasheet for **RC228144**

ACTR3C (NM_001164458) Human Tagged ORF Clone

Product data:

Product Type: Expression Plasmids
Product Name: ACTR3C (NM_001164458) Human Tagged ORF Clone
Tag: Myc-DDK
Symbol: ACTR3C
Synonyms: ARP11
Mammalian Cell Selection: Neomycin
Vector: pCMV6-Entry (PS100001)
E. coli Selection: Kanamycin (25 ug/mL)
ORF Nucleotide Sequence: >RC228144 representing NM_001164458
Red=Cloning site Blue=ORF Green=Tags(s)

TTTTGTAATACGACTCACTATAGGGCGGCCGGAATTCGTCGACTGGATCCGGTACCGAGGAGATCTGCC
GCC**CGATCGCC**

ATGTTCGAATCATTTAACGTTCCAGGACTCTACATTGCAGTTCAGGCAGTCTGGCCTTGGCGGCATCTT
GGACATCTCGACAAGTGGGTGAACGTACATTAACGGGGATAGTCATTGACAGCGGAGATGGAGTCAACCA
TGTTATCCAGTGGCAGAAGGTTATGTAATTGGAAGCTGCATCAAACACATCCCGATTGCAGGTAGAGAT
ATTACGTATTTCAACAGCTGCTAAGGAGAGGGAGGTGGGAATCCCTCCTGAGCAGTCACTGGAGA
CCGCAAAAGCCATTAAGGAGAAATACTGTTACATTTGCCCGATATAGTCAAGGAATTTGCCAAGTATGA
TGTGGATCCCCAGAAGTGGATCAAACAGTACACGGGTATCAATGCGATCAACCAGAAGAAGTTTGTATA
GACGTTGGTTACGAAAGATTCCTGGGACCTGAAATATTCTTTACCCGGAGTTTGCACCCAGACTCTA
TGGAGTCCATCTCAGATGTTGTTGATGAAGTAACAGAACTGCCCATCGATGTGCGGCGTCCGCTGTA
TAAGATGGAACAAATCCACTGAGCTATCCTCAAGGTCACGGATTCCATCCTCTGTACCTCCATTTTCAT

ACGCGTACGCGGCCGCTCGAGCAGAACTCATCTCAGAAGAGGATCTGGCAGCAATGATATCCTGGATT
ACAAGGATGACGACGATAAGGTTTAA

Protein Sequence: >RC228144 representing NM_001164458
Red=Cloning site Green=Tags(s)

MFESFNVPGLYIAVQAVLALAASWTSRQVGERTLTGIVIDSGDGVTHVIPVAEGYVIGSCIKHIPIAGRD
ITYFIQQLLREREVGIPPEQSLETAKAIKEKYCYICPDIVKEFAKYDVPQKWKIKQYTGINAINQKFFVI
DVGYERFLGPEIFFHPEFANPDSMESISDVVDEVIQNCPIDVRRPLYKMEQIPLSYPQGHGFHPLSPPFH

TRTRPLEQKLISEEDLAANDILDYKDDDDKV



Chromatograms: https://cdn.origene.com/chromatograms/mk8038_g06.zip

Restriction Sites: SgfI-MluI

Cloning Scheme:



ACCN: NM_001164458

ORF Size: 630 bp

OTI Disclaimer: The molecular sequence of this clone aligns with the gene accession number as a point of reference only. However, individual transcript sequences of the same gene can differ through naturally occurring variations (e.g. polymorphisms), each with its own valid existence. This clone is substantially in agreement with the reference, but a complete review of all prevailing variants is recommended prior to use. [More info](#)

OTI Annotation: This clone was engineered to express the complete ORF with an expression tag. Expression varies depending on the nature of the gene.

Components: The ORF clone is ion-exchange column purified and shipped in a 2D barcoded Matrix tube containing 10ug of transfection-ready, dried plasmid DNA (reconstitute with 100 ul of water).

Reconstitution Method:

1. Centrifuge at 5,000xg for 5min.
2. Carefully open the tube and add 100ul of sterile water to dissolve the DNA.
3. Close the tube and incubate for 10 minutes at room temperature.
4. Briefly vortex the tube and then do a quick spin (less than 5000xg) to concentrate the liquid at the bottom.
5. Store the suspended plasmid at -20°C. The DNA is stable for at least one year from date of shipping when stored at -20°C.

RefSeq: [NM_001164458.1](#), [NP_001157930.1](#)

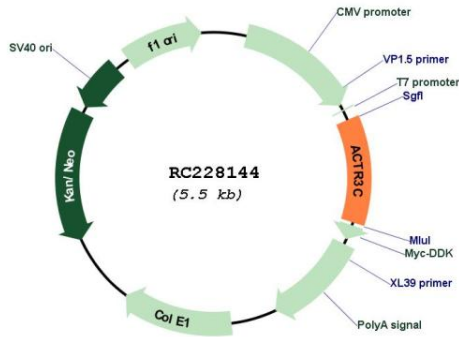
RefSeq ORF: 633 bp

Locus ID: 653857

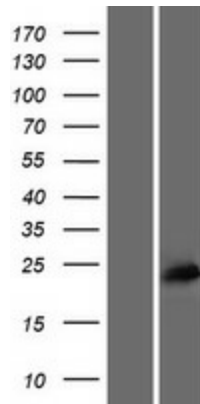
UniProt ID: [Q9C0K3](#)

Cytogenetics: 7q36.1
MW: 23.5 kDa
Gene Summary: May play a role in the suppression of metastatic potential in lung adenoma carcinoma cells. [UniProtKB/Swiss-Prot Function]

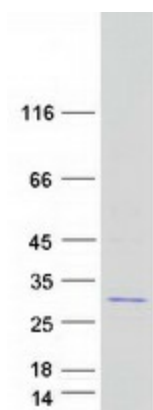
Product images:



Circular map for RC228144



Western blot validation of overexpression lysate (Cat# [LY431172]) using anti-DDK antibody (Cat# [TA50011-100]). Left: Cell lysates from untransfected HEK293T cells; Right: Cell lysates from HEK293T cells transfected with RC228144 using transfection reagent MegaTran 2.0 (Cat# [TT210002]).



Coomassie blue staining of purified ACTR3C protein (Cat# [TP328144]). The protein was produced from HEK293T cells transfected with ACTR3C cDNA clone (Cat# RC228144) using MegaTran 2.0 (Cat# [TT210002]).