

## Product datasheet for **RC228139**

### **MBD3L4 (NM\_001164419) Human Tagged ORF Clone**

#### Product data:

Product Type: Expression Plasmids  
Product Name: MBD3L4 (NM\_001164419) Human Tagged ORF Clone  
Tag: Myc-DDK  
Symbol: MBD3L4  
Mammalian Cell Selection: Neomycin  
Vector: pCMV6-Entry (PS100001)  
E. coli Selection: Kanamycin (25 ug/mL)  
ORF Nucleotide Sequence: >RC228139 representing NM\_001164419  
Red=Cloning site Blue=ORF Green=Tags(s)

TTTTGTAATACGACTCACTATAGGGCGGCCGGAATTCGTCGACTGGATCCGGTACCGAGGAGATCTGCC  
GCC**CGATCGCC**

ATGGGAGAGCCTGCGTTACCTCTTTCCGAGCCACCTGTTCTGGGAAGCTCAAAGAAACATGATGC  
CCTGGGCTTTACAGAAGAAACGAGAAATCCACATGGCCAAGGCCCATCGGAGACGAGCTGCGAGGCTGC  
TCTCCCATGAGACTCACCAGCTGCATCTCCGGAGGCCGGTGACAAGGATCAGGTCTCATCCTGACAAC  
CAGGTGAGACGCAGAAAAGGGGACGAGCACCTGGAGAAGCCGACGCAACTCTGCGCTACCGGAGACTGC  
AGGCCCTGCAGCCCTGCAGCAGCAAGGAGAAGTTCAAGTCCACTGCATTGGAGAGCGTCTTAAGTAT  
CCTTGCACCGGGGACGGCCGGTGAATCTCTGGACAGAGCTGGTGTGAGCGTGTGCGCATCCCGCTTGAG  
CCCACCCCTGGGCGTTTCCAGCTGTGGCAGGGGGCCAAACCCAGGAATGGGTTGTGAGTCCCACCGC  
CCCTCTCTGGCAATTGGTGACTCCTGCAGATATCCGGAGACAGGCCAGGAGGTGAAGAAAGCCAGGGA  
GAGACTGGCAAGGCCTTGCAGGCAGACAGGCTGGCCAGGCAGGCAGAAATGCTGACATGTAGA

**ACGCGT**ACGCGGCCGCTCGAGCAGAAACTCATCTCAGAAGAGGATCTGGCAGCAAATGATATCCTGGATT  
ACAAGGATGACGACGATAAGGTTTAA

Protein Sequence: >RC228139 representing NM\_001164419  
Red=Cloning site Green=Tags(s)

MGEPAFTSFPSPVVLGKLKRNMPWALQKKREIHMKAHRRRAARSALPMRLTSCIFRRPVTRIRSHPDN  
QVRRRGDEHLEKPPQLCAYRRLQALQPCSSQGEGLHLESVLSILAPGTAGESLDRAGAERVRIPL  
PTPGRFPAVAGGPTPGMGCQLPPPLSGQLVTPADIRRRQARRVKKARERLAKALQADRLARQAEMLTCT

**TR**TRPLEQKLISEEDLAANDILDYKDDDDKV

Chromatograms: [https://cdn.origene.com/chromatograms/mk8038\\_h10.zip](https://cdn.origene.com/chromatograms/mk8038_h10.zip)



View online »

**Restriction Sites:** SgfI-MluI

**Cloning Scheme:**



**ACCN:** NM\_001164419

**ORF Size:** 624 bp

**OTI Disclaimer:** The molecular sequence of this clone aligns with the gene accession number as a point of reference only. However, individual transcript sequences of the same gene can differ through naturally occurring variations (e.g. polymorphisms), each with its own valid existence. This clone is substantially in agreement with the reference, but a complete review of all prevailing variants is recommended prior to use. [More info](#)

**OTI Annotation:** This clone was engineered to express the complete ORF with an expression tag. Expression varies depending on the nature of the gene.

**Components:** The ORF clone is ion-exchange column purified and shipped in a 2D barcoded Matrix tube containing 10ug of transfection-ready, dried plasmid DNA (reconstitute with 100 ul of water).

**Reconstitution Method:**

1. Centrifuge at 5,000xg for 5min.
2. Carefully open the tube and add 100ul of sterile water to dissolve the DNA.
3. Close the tube and incubate for 10 minutes at room temperature.
4. Briefly vortex the tube and then do a quick spin (less than 5000xg) to concentrate the liquid at the bottom.
5. Store the suspended plasmid at -20°C. The DNA is stable for at least one year from date of shipping when stored at -20°C.

**RefSeq:** [NM\\_001164419.1](#), [NP\\_001157891.1](#)

**RefSeq ORF:** 627 bp

**Locus ID:** 653656

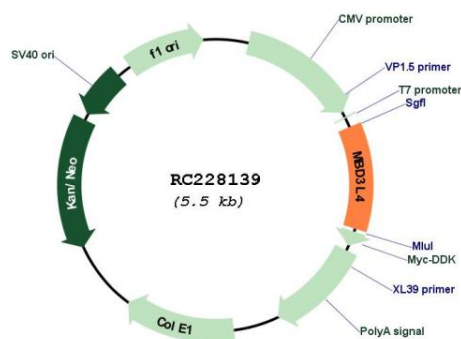
**UniProt ID:** [A6NDZ8](#)

**Cytogenetics:** 19p13.2

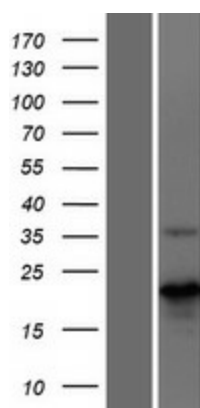
**MW:** 22.9 kDa

**Gene Summary:** This gene encodes a member of a family of proteins that are related to methyl-CpG-binding proteins but lack the methyl-CpG binding domain. There is no definitive support for transcription of this locus, and the transcript structure is inferred from other family members. [provided by RefSeq, Aug 2009]

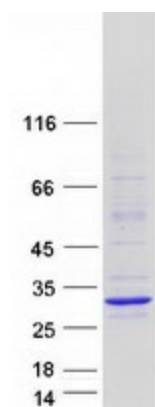
## Product images:



Circular map for RC228139



Western blot validation of overexpression lysate (Cat# [LY431167]) using anti-DDK antibody (Cat# [TA50011-100]). Left: Cell lysates from untransfected HEK293T cells; Right: Cell lysates from HEK293T cells transfected with RC228139 using transfection reagent MegaTran 2.0 (Cat# [TT210002]).



Coomassie blue staining of purified MBD3L4 protein (Cat# [TP328139]). The protein was produced from HEK293T cells transfected with MBD3L4 cDNA clone (Cat# RC228139) using MegaTran 2.0 (Cat# [TT210002]).