

Product datasheet for **RC228135**

RAB28 (NM_001159601) Human Tagged ORF Clone

Product data:

Product Type:	Expression Plasmids
Product Name:	RAB28 (NM_001159601) Human Tagged ORF Clone
Tag:	Myc-DDK
Symbol:	RAB28
Synonyms:	CORD18
Mammalian Cell Selection:	Neomycin
Vector:	pCMV6-Entry (PS100001)
E. coli Selection:	Kanamycin (25 ug/mL)
ORF Nucleotide Sequence:	>RC228135 representing NM_001159601 Red=Cloning site Blue=ORF Green=Tags(s)

TTTTGTAATACGACTCACTATAGGGCGGCCGGAATTCGTCGACTGGATCCGGTACCGAGGAGATCTGCC
GCC**CGATCGCC**

ATGTCGGACTCTGAGGAGGAGCCAGGACCGCAACTGAAAAATCGTCGTGCTGGGGACGGCGCCTCCG
GGAAGACCTCCTTAACACTCGTGTTCCTCAAGAACTTTGGGAAACAGTACAAACAACTATAGGACT
GGATTTCTTTTGAAGGATAACATTGCCAGGAACTTGAATGTTACCTTCAAATTTGGGATATAGGA
GGCAGACAATAGGAGGCAAAATGTTGGATAAATATATCTATGGAGCACAGGGAGTCCTCTTGGTATATG
ATATTACAAATTATCAAAGCTTTGAGAATTTAGAAGATTGGTATACTGTGGTGAAGAAAGTGAGCGAGGA
GTCAGAAACTCAGCCACTGGTTGCCTTGGTAGGCAATAAAATTGATTTGGAGCATATGCGAACAATAAAA
CCTGAAAAACACTTACGGTTTTGCCAGGAAATGGTTTTAGTAGCCACTTTGTCTCAGCCAAGACAGGAG
ACTCTGTCTTCTGTGCTTTAGAAAGTTGCTGCTGAAATCCTTGGGATCAAATTAACAAGCAGAAAT
AGAACAGTCACAGGGCCATTTTCATTATTTTCATTTCACTCAACTAATAGAGAA

ACGCGTACGCGGCCGCTCGAGCAGAAACTCATCTCAGAAGAGGATCTGGCAGCAAATGATATCCTGGATT
ACAAGGATGACGACGATAAGGTTTAA

Protein Sequence:	>RC228135 representing NM_001159601 Red=Cloning site Green=Tags(s)
-------------------	---

MSDSEESQDRQLKIVVLGDGASGKTSLTTCFAQETFQKQYKQTIGLDFFLRITLPGNLNVTLQIWDIG
GQTIGGKMLDKYIYGAQGVLLVYDITNYQSFENLEDWYTVVKKVSESESQPLVALVGNKIDLEHMRTIK
PEKHLRFQENGFSSHFVSAKTGDSVFLCFQKVAEILGIKLNKAEIEQSQGHFIIFISSTNRE

TRTRPLEQKLISEEDLAANDILDYKDDDDKV



[View online »](#)

Chromatograms: https://cdn.origene.com/chromatograms/ja1464_h10.zip

Restriction Sites: SgfI-MluI

Cloning Scheme:



ACCN: NM_001159601

ORF Size: 612 bp

OTI Disclaimer: The molecular sequence of this clone aligns with the gene accession number as a point of reference only. However, individual transcript sequences of the same gene can differ through naturally occurring variations (e.g. polymorphisms), each with its own valid existence. This clone is substantially in agreement with the reference, but a complete review of all prevailing variants is recommended prior to use. [More info](#)

OTI Annotation: This clone was engineered to express the complete ORF with an expression tag. Expression varies depending on the nature of the gene.

Components: The ORF clone is ion-exchange column purified and shipped in a 2D barcoded Matrix tube containing 10ug of transfection-ready, dried plasmid DNA (reconstitute with 100 ul of water).

Reconstitution Method:

1. Centrifuge at 5,000xg for 5min.
2. Carefully open the tube and add 100ul of sterile water to dissolve the DNA.
3. Close the tube and incubate for 10 minutes at room temperature.
4. Briefly vortex the tube and then do a quick spin (less than 5000xg) to concentrate the liquid at the bottom.
5. Store the suspended plasmid at -20°C. The DNA is stable for at least one year from date of shipping when stored at -20°C.

RefSeq: [NM_001159601.1](#), [NP_001153073.1](#)

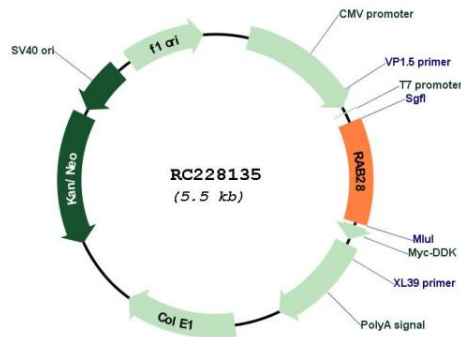
RefSeq ORF: 615 bp

Locus ID: 9364

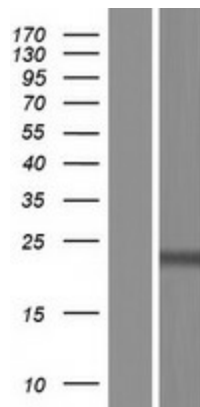
UniProt ID: [P51157](#)

Cytogenetics: 4p15.33
Protein Families: Druggable Genome
MW: 22.8 kDa
Gene Summary: This gene encodes a member of the Rab subfamily of Ras-related small GTPases. The encoded protein may be involved in regulating intracellular trafficking. Alternative splicing results in multiple transcript variants. Pseudogenes of this gene are found on chromosomes 9 and X. [provided by RefSeq, Apr 2009]

Product images:



Circular map for RC228135



Western blot validation of overexpression lysate (Cat# [LY431163]) using anti-DDK antibody (Cat# [TA50011-100]). Left: Cell lysates from untransfected HEK293T cells; Right: Cell lysates from HEK293T cells transfected with RC228135 using transfection reagent MegaTran 2.0 (Cat# [TT210002]).