

Product datasheet for **RC228132**

ARP10 (APOBEC3H) (NM_001166003) Human Tagged ORF Clone

Product data:

Product Type: Expression Plasmids
Product Name: ARP10 (APOBEC3H) (NM_001166003) Human Tagged ORF Clone
Tag: Myc-DDK
Symbol: ARP10
Synonyms: A3H; ARP-10; ARP10
Mammalian Cell Selection: Neomycin
Vector: pCMV6-Entry (PS100001)
E. coli Selection: Kanamycin (25 ug/mL)
ORF Nucleotide Sequence: >RC228132 representing NM_001166003
 Red=Cloning site Blue=ORF Green=Tags(s)

TTTTGTAATACGACTCACTATAGGGCGGCCGGAATTCGTCGACTGGATCCGGTACCGAGGAGATCTGCC
 GCC**CGATCGCC**

ATGGCTCTGTTAACAGCCGAAACATTCCGCTTACAGTTTAAACAACAGCGCCGCCTCAGAAGGCCTTACT
 ACCCGAGGAAGGCCCTCTTGTTACCAGCTGACGCCGAGAATGGCTCCACGCCACGAGAGGCTACTT
 TGAACAAGAAAAGTCCATGCAGAAATTTGCTTTATTAACGAGATCAAGTCCATGGGACTGGACGAA
 ACGCAGTGCTACCAAGTACCTGTACCTCACGTGGAGCCCTGCTCCTCTGTGCCTGGGAGCTGGTTG
 ACTTCATCAAGGCTCACGACCATCTGAACCTGGGCATCTTCGCCCTCCCGCTGTACTACCACTGGTGCAA
 GCCCAGCAGAAGGGGCTGCGGCTTCTGTGTGGATCCCAGGTCCCGGTGGAGGTCATGGGCTTCCCAAAG
 TTTGCTGACTGCTGGGAAAACCTTTGTGGACCACGAGAAACCGCTTTCCTTCAACCCCTATAAGATGTTAG
 AGGAGCTAGATAAAAACAGTCGAGCCATAAAGCGACGGCTTGAGAGGATAAAGATTCCAGGGGTACGTGC
 GCAGGGTCTGTTACATGGATATATTGTGTGATGCTGAGGTC

ACGCGTACGCGGCCGCTCGAGCAGAACTCATCTCAGAAGAGGATCTGGCAGCAATGATATCCTGGATT
 ACAAGGATGACGACGATAAGGTTTAA

Protein Sequence: >RC228132 representing NM_001166003
 Red=Cloning site Green=Tags(s)

MALLTAETFRLQFNKRRLRRPYPRKALLCYQLTPQNGSTPTRGYFENKKKCHAEICFINEIKSMGLDE
 TQCYQVTCYLTWSPCSSCAWELVDFIKAHDHLNLGIFASRLYYHWCKPQQKGLRLLCGSQVPVEVMGFPK
 FADCWENFVDHEKPLSFNPYKMLEELDKNSRAIKRRLERIKIPGVRAQGRYMDILCDAEV

TRTRPLEQKLISEEDLAANDILDYKDDDDKV



[View online »](#)

Chromatograms: https://cdn.origene.com/chromatograms/mk8038_h11.zip

Restriction Sites: SgfI-MluI

Cloning Scheme:



ACCN: NM_001166003

ORF Size: 603 bp

OTI Disclaimer: The molecular sequence of this clone aligns with the gene accession number as a point of reference only. However, individual transcript sequences of the same gene can differ through naturally occurring variations (e.g. polymorphisms), each with its own valid existence. This clone is substantially in agreement with the reference, but a complete review of all prevailing variants is recommended prior to use. [More info](#)

OTI Annotation: This clone was engineered to express the complete ORF with an expression tag. Expression varies depending on the nature of the gene.

Components: The ORF clone is ion-exchange column purified and shipped in a 2D barcoded Matrix tube containing 10ug of transfection-ready, dried plasmid DNA (reconstitute with 100 ul of water).

Reconstitution Method:

1. Centrifuge at 5,000xg for 5min.
2. Carefully open the tube and add 100ul of sterile water to dissolve the DNA.
3. Close the tube and incubate for 10 minutes at room temperature.
4. Briefly vortex the tube and then do a quick spin (less than 5000xg) to concentrate the liquid at the bottom.
5. Store the suspended plasmid at -20°C. The DNA is stable for at least one year from date of shipping when stored at -20°C.

RefSeq: [NM_001166003.1](#), [NP_001159475.1](#)

RefSeq ORF: 603 bp

Locus ID: 164668

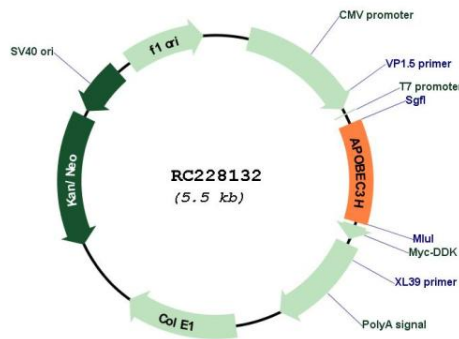
UniProt ID: [Q6NTE7](#)

Cytogenetics: 22q13.1

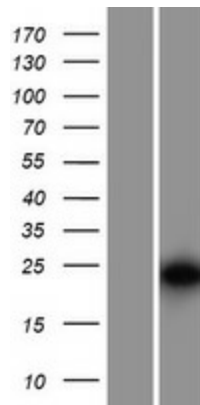
MW: 23.4 kDa

Gene Summary: This gene encodes a member of the apolipoprotein B mRNA-editing enzyme catalytic polypeptide 3 family of proteins. The encoded protein is a cytidine deaminase that has antiretroviral activity by generating lethal hypermutations in viral genomes. Polymorphisms and alternative splicing in this gene influence its antiretroviral activity and are associated with increased resistance to human immunodeficiency virus type 1 infection in certain populations. Alternative splicing results in multiple transcript variants.[provided by RefSeq, Oct 2009]

Product images:



Circular map for RC228132



Western blot validation of overexpression lysate (Cat# [LY431160]) using anti-DDK antibody (Cat# [TA50011-100]). Left: Cell lysates from untransfected HEK293T cells; Right: Cell lysates from HEK293T cells transfected with RC228132 using transfection reagent MegaTran 2.0 (Cat# [TT210002]).