

Product datasheet for **RC228131**

TLCD1 (NM_001160407) Human Tagged ORF Clone

Product data:

Product Type: Expression Plasmids
Product Name: TLCD1 (NM_001160407) Human Tagged ORF Clone
Tag: Myc-DDK
Symbol: TLCD1
Mammalian Cell Selection: Neomycin
Vector: pCMV6-Entry (PS100001)
E. coli Selection: Kanamycin (25 ug/mL)
ORF Nucleotide Sequence: >RC228131 representing NM_001160407
Red=Cloning site Blue=ORF Green=Tags(s)

TTTTGTAATACGACTCACTATAGGGCGGCCGGAATTCGTCGACTGGATCCGGTACCGAGGAGATCTGCC
GCC**CGATCGCC**

ATGGGTTACTCAGCAGTCCCAAGTGCCACCTCGCGGGCGGGGAGGGACAGTGTATGGCAGACTCCTG
ACATGTTAGTGGAGATTGAGACGGCGTGGTCACTTTCTGGCTATTTGCTCGTTTGCTTCTCTCGGGGTA
TTTCATCCACGATACGGTGGACATCGTGGCTAGCGGACAGACGCGAGCCTCTTGGGAATACCTTGCCAT
CACGTCATGGCCATGGTGCCTTCTTCCGGCATCTTTGGAGCAGCTTTGTCGGTGGGGTGTCTTAA
CACTACTGGTGAAGTCAGCAACATCTTCTCACCATTCCGATGATGATGAAAATCAGTAATGCCAGGA
TCATCTCCTCTACCGGGTAAACAAGTATGTGAACCTGGTCACTGACTTTCTCTTCCGCCTGGCCCCCAG
GCCTACCTCACCATTTCTTCTTGCCTTATGTGAACCAGAGACCCTGGGCACCTTCTGCTGGGTATCC
TGCTCATGCTGGACGTGATGATCATAATCTACTTTCCCGCCTCTCCGCTCTGACTTCTGCCCTGAGCA
TGTCCTCAAGAAGCAACACAAAGACAAGTTCTTGACTGAG

ACGGTACGCGGCCGCTCGAGCAGAACTCATCTCAGAAGAGGATCTGGCAGCAATGATATCCTGGATT
ACAAGGATGACGACGATAAGGTTTAA

Protein Sequence: >RC228131 representing NM_001160407
Red=Cloning site Green=Tags(s)

MGYSAVPKCPPRGRGRDSVWQTPDMLVEIETAWSLSGYLLVCF SAGYFIHDTVDIVASGQTRASWEYL VH
HVMAMGAFFSGIFWSSFVGGVLTLLVEVSNIFLTIRMMMKISNAQDHLLYRVNKYVNLV MYFLFRLAPQ
AYLTHFFLRYVNQRTLGTFLGILLMLDMIIYFSRLLRSDFCPEHVPKKQHKDKFLTE

TRTRPLEQKLI SEEDLAANDILDYKDDDDKV

Chromatograms: https://cdn.origene.com/chromatograms/ja1456_g07.zip



[View online »](#)

Restriction Sites: SgfI-MluI

Cloning Scheme:



ACCN: NM_001160407

ORF Size: 600 bp

OTI Disclaimer: The molecular sequence of this clone aligns with the gene accession number as a point of reference only. However, individual transcript sequences of the same gene can differ through naturally occurring variations (e.g. polymorphisms), each with its own valid existence. This clone is substantially in agreement with the reference, but a complete review of all prevailing variants is recommended prior to use. [More info](#)

OTI Annotation: This clone was engineered to express the complete ORF with an expression tag. Expression varies depending on the nature of the gene.

Components: The ORF clone is ion-exchange column purified and shipped in a 2D barcoded Matrix tube containing 10ug of transfection-ready, dried plasmid DNA (reconstitute with 100 ul of water).

Reconstitution Method:

1. Centrifuge at 5,000xg for 5min.
2. Carefully open the tube and add 100ul of sterile water to dissolve the DNA.
3. Close the tube and incubate for 10 minutes at room temperature.
4. Briefly vortex the tube and then do a quick spin (less than 5000xg) to concentrate the liquid at the bottom.
5. Store the suspended plasmid at -20°C. The DNA is stable for at least one year from date of shipping when stored at -20°C.

RefSeq: [NM_001160407.1](#), [NP_001153879.1](#)

RefSeq ORF: 603 bp

Locus ID: 116238

UniProt ID: [Q96CP7](#)

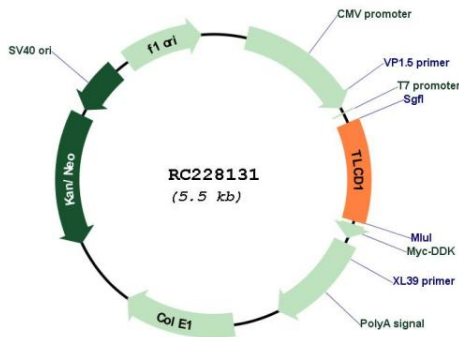
Cytogenetics: 17q11.2

Protein Families: Transmembrane

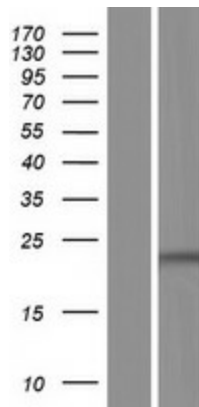
MW: 22.9 kDa

Gene Summary: Regulates the composition and fluidity of the plasma membrane (PubMed:30509349). Inhibits the incorporation of membrane-fluidizing phospholipids containing omega-3 long-chain polyunsaturated fatty acids (LCPUFA) and thereby promotes membrane rigidity (PubMed:30509349). Does not appear to have any effect on LCPUFA synthesis (PubMed:30509349).[UniProtKB/Swiss-Prot Function]

Product images:



Circular map for RC228131



Western blot validation of overexpression lysate (Cat# [LY431159]) using anti-DDK antibody (Cat# [TA50011-100]). Left: Cell lysates from untransfected HEK293T cells; Right: Cell lysates from HEK293T cells transfected with RC228131 using transfection reagent MegaTran 2.0 (Cat# [TT210002]).