

Product datasheet for **RC228125**

FHL1 (NM_001159703) Human Tagged ORF Clone

Product data:

Product Type:	Expression Plasmids
Product Name:	FHL1 (NM_001159703) Human Tagged ORF Clone
Tag:	Myc-DDK
Symbol:	FHL1
Synonyms:	FCMSU; FHL-1; FHL1A; FHL1B; FLH1A; KYOT; RBMX1A; RBMX1B; SLIM; SLIM-1; SLIM1; SLIMMER; XMPMA
Mammalian Cell Selection:	Neomycin
Vector:	pCMV6-Entry (PS100001)
E. coli Selection:	Kanamycin (25 ug/mL)
ORF Nucleotide Sequence:	>RC228125 representing NM_001159703 Red=Cloning site Blue=ORF Green=Tags(s)

TTTTGTAATACGACTCACTATAGGGCGGCCGGAATTCGTCGACTGGATCCGGTACCGAGGAGATCTGCC
 GCC**CGATCGCC**

ATGGCGGAGAAGTTTGACTGCCACTACTGCAGGGATCCCTTGCAGGGGAAGAAGTATGTGCAAAAGGATG
 GCCACCACTGCTGCCTGAAATGCTTTGACAAGTTCTGTGCCAACACCTGTGTGGAATGCCGAAGCCCAT
 CGGTGCGGACTCCAAGGAGGTGCACTATAAGAACCGCTTCTGGCATGACACCTGCTTCGGCTGTGCCAAG
 TGCCTTCACCCCTTGCCAATGAGACCTTTGTGGCCAAGGACAACAAGATCCTGTGCAACAAGTGCACCA
 CTCGGGAGGACTCCCCAAGTGAAGGGGTGCTTCAAGGCCATTGTGGCAGGAGATCAAAACGTGGAGTA
 CAAGGGGACCGTCTGGCACAAGACTGCTTCACCTGTAGTAAGTCAAGCAAGTCATCGGGACTGGAAGC
 TTCTTCCCTAAAGGGGAGGACTTCTACTGCGTGACTTGCCATGAGACCAAGTTTGCCAAGCATTGCGTGA
 AGTGCAACAAGGTTTGGTAAAGGCTCCAGTGTGGTGGCCTATGAAGACAATCCTGGCACGACTACTGC
 TTCCACTGCAAAAAATGCTCCG

ACGCGTACGCGGCCGCTCGAGCAGAACTCATCTCAGAAGAGGATCTGGCAGCAAATGATATCCTGGATT
 ACAAGGATGACGACGATAAGGTTTAA


[View online »](#)

Protein Sequence: >RC228125 representing NM_001159703
 Red=Cloning site Green=Tags(s)

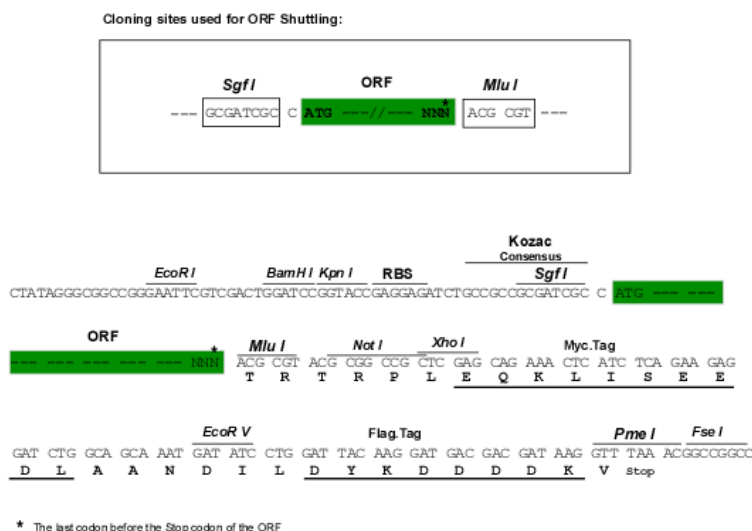
MAEKFDCHYCRDPLQGKKYVQKDGHHCLKCFDKFCANTCVECCKPIGADSKEVHYKNRFWHDTCFRCAK
 CLHPLANETFFVAKDNKILCNKCTTREDSPKCKGCFKAIVAGDQNVYKGTVWHKDCFTCSNCKQVIGTGS
 FFPKGEDFYCVTCHETKFAKHCVKCNKGLVKAPVWPMKDNPGTTTASTAKNAP

TRTRPLEQKLISEEDLAANDILDYKDDDDKV

Chromatograms: https://cdn.origene.com/chromatograms/ja1452_d03.zip

Restriction Sites: SgfI-MluI

Cloning Scheme:



ACCN: NM_001159703

ORF Size: 582 bp

OTI Disclaimer: The molecular sequence of this clone aligns with the gene accession number as a point of reference only. However, individual transcript sequences of the same gene can differ through naturally occurring variations (e.g. polymorphisms), each with its own valid existence. This clone is substantially in agreement with the reference, but a complete review of all prevailing variants is recommended prior to use. [More info](#)

OTI Annotation: This clone was engineered to express the complete ORF with an expression tag. Expression varies depending on the nature of the gene.

Components: The ORF clone is ion-exchange column purified and shipped in a 2D barcoded Matrix tube containing 10ug of transfection-ready, dried plasmid DNA (reconstitute with 100 ul of water).

Reconstitution Method:

1. Centrifuge at 5,000xg for 5min.
2. Carefully open the tube and add 100ul of sterile water to dissolve the DNA.
3. Close the tube and incubate for 10 minutes at room temperature.
4. Briefly vortex the tube and then do a quick spin (less than 5000xg) to concentrate the liquid at the bottom.
5. Store the suspended plasmid at -20°C. The DNA is stable for at least one year from date of shipping when stored at -20°C.

RefSeq: [NM_001159703.2](#)

RefSeq ORF: 585 bp

Locus ID: 2273

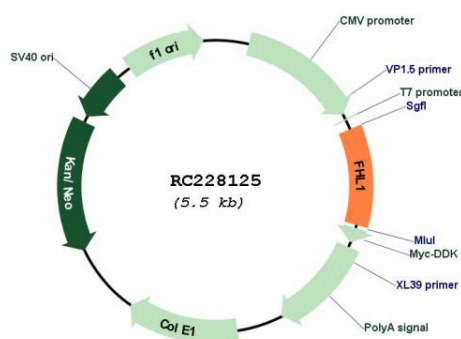
UniProt ID: [Q13642](#)

Cytogenetics: Xq26.3

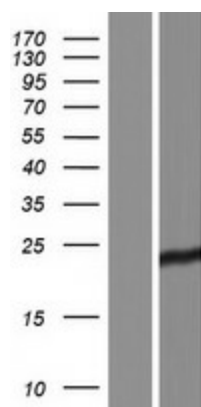
MW: 21.8 kDa

Gene Summary: This gene encodes a member of the four-and-a-half-LIM-only protein family. Family members contain two highly conserved, tandemly arranged, zinc finger domains with four highly conserved cysteines binding a zinc atom in each zinc finger. Expression of these family members occurs in a cell- and tissue-specific mode and these proteins are involved in many cellular processes. Mutations in this gene have been found in patients with Emery-Dreifuss muscular dystrophy. Multiple alternately spliced transcript variants which encode different protein isoforms have been described.[provided by RefSeq, Nov 2009]

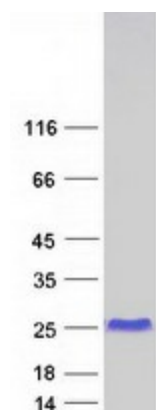
Product images:



Circular map for RC228125



Western blot validation of overexpression lysate (Cat# [LY431153]) using anti-DDK antibody (Cat# [TA50011-100]). Left: Cell lysates from un-transfected HEK293T cells; Right: Cell lysates from HEK293T cells transfected with RC228125 using transfection reagent MegaTran 2.0 (Cat# [TT210002]).



Coomassie blue staining of purified FHL1 protein (Cat# [TP328125]). The protein was produced from HEK293T cells transfected with FHL1 cDNA clone (Cat# RC228125) using MegaTran 2.0 (Cat# [TT210002]).