

## Product datasheet for RC228122

### PRR29 (NM\_001164257) Human Tagged ORF Clone

#### Product data:

**Product Type:** Expression Plasmids  
**Product Name:** PRR29 (NM\_001164257) Human Tagged ORF Clone  
**Tag:** Myc-DDK  
**Symbol:** PRR29  
**Synonyms:** C17orf72  
**Mammalian Cell Selection:** Neomycin  
**Vector:** pCMV6-Entry (PS100001)  
**E. coli Selection:** Kanamycin (25 ug/mL)  
**ORF Nucleotide Sequence:** >RC228122 representing NM\_001164257  
 Red=Cloning site Blue=ORF Green=Tags(s)

TTTTGTAATACGACTCACTATAGGGCGGCCGGAATTCGTCGACTGGATCCGGTACCGAGGAGATCTGCC  
 GCC**CGATCGCC**

ATGGCCTCTGGGGCGGGGAAGCTGGGGTCGCTCCCCACCGCAGAGCGCAGTCCCAGCGCCCTGGGTCA  
 CCTTCTGCAGCCCTCTCGTGGCCGTCACCTGCGCCCCGAGCCAGGCCGCGTGAAGGAAGACCT  
 GCTGGAAGTATGATGCTGCAGAACGCGCAGATGCACCAGCTGCTGCTGAGTCGCTGGTGGCTGGAGCG  
 CTGCAGCCCCGGCCTGCCTGCCTGCCCTCAGGTCACCTGGAGTTCCACAGGAAGAGCCTGAGGAGG  
 AGGAGGAGGAGATGGACGTGCGGGAGAAAGGGCCTTTGGTGTTCACCACCACTACTTGCCTATTTGAT  
 GCCTCCCCGGGTGCCCTGCTGCCCTGGCCAGCCCCCTTCTTCCCACCCCTGCTTGTGACGCCCTACTTG  
 CAGGACGTGCCAGGATTCAGCACTGTCCTGCCTCCAGGGAAAGGGAGGTGAGAGCTGTGCCCCACCCC  
 CACCCCCAGTGCCACAGGGACTGTGGGTGCTGATGTACCCCCGGCTTACAGACTACTATGATGCCGAGAG  
 CCTCCTA

**ACGCGT**ACGCGGCCGCTCGAGCAGAACTCATCTCAGAAGAGGATCTGGCAGCAATGATATCCTGGATT  
 ACAAGGATGACGACGATAAGGTTTAA

**Protein Sequence:** >RC228122 representing NM\_001164257  
 Red=Cloning site Green=Tags(s)

MASGAGGSWGRSPPQSAVPTPWVTFLLQPLSWAVPPAPPQGRVKEDLLELMLLQNAQMHQLLLSRLVAGA  
 LQPRPASPCPQVYLEVPQEEPEEEEEEMDVREKGPLVFHHHYLPYLMPSGALLPWPAPFFPTACQPYL  
 QDVPRIQHCPASREREVRAVPPPPPSATGTVGADVPPASDYDAESLL

**TRTRPLEQKLISEEDLAANDILDYKDDDDKV**

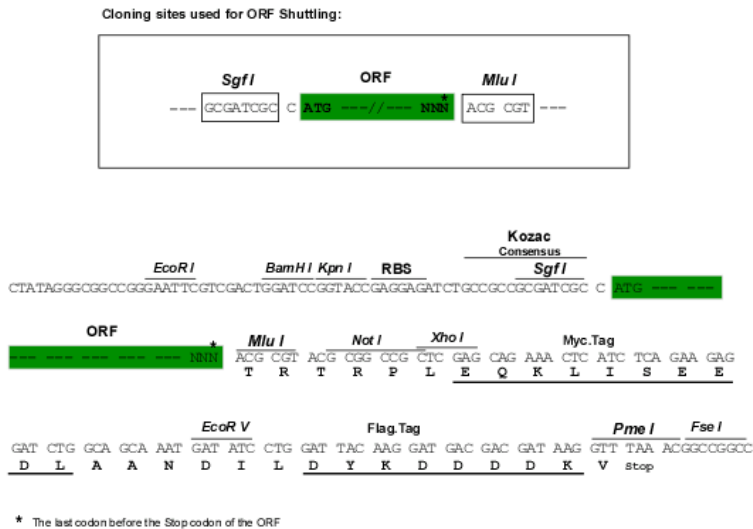


[View online »](#)

Chromatograms: [https://cdn.origene.com/chromatograms/mk8039\\_a01.zip](https://cdn.origene.com/chromatograms/mk8039_a01.zip)

Restriction Sites: SgfI-MluI

Cloning Scheme:



ACCN: NM\_001164257

ORF Size: 567 bp

OTI Disclaimer: The molecular sequence of this clone aligns with the gene accession number as a point of reference only. However, individual transcript sequences of the same gene can differ through naturally occurring variations (e.g. polymorphisms), each with its own valid existence. This clone is substantially in agreement with the reference, but a complete review of all prevailing variants is recommended prior to use. [More info](#)

OTI Annotation: This clone was engineered to express the complete ORF with an expression tag. Expression varies depending on the nature of the gene.

Components: The ORF clone is ion-exchange column purified and shipped in a 2D barcoded Matrix tube containing 10ug of transfection-ready, dried plasmid DNA (reconstitute with 100 ul of water).

Reconstitution Method:

1. Centrifuge at 5,000xg for 5min.
2. Carefully open the tube and add 100ul of sterile water to dissolve the DNA.
3. Close the tube and incubate for 10 minutes at room temperature.
4. Briefly vortex the tube and then do a quick spin (less than 5000xg) to concentrate the liquid at the bottom.
5. Store the suspended plasmid at -20°C. The DNA is stable for at least one year from date of shipping when stored at -20°C.

RefSeq: [NM\\_001164257.2](#)

RefSeq ORF: 570 bp

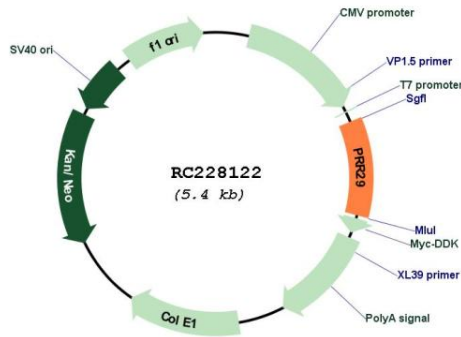
Locus ID: 92340

UniProt ID: [P0C7W0](#)

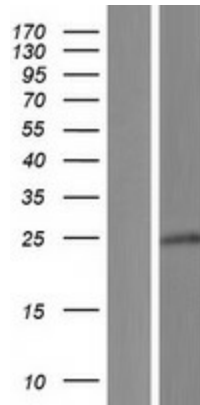
Cytogenetics: 17q23.3

MW: 20.5 kDa

**Product images:**



Circular map for RC228122



Western blot validation of overexpression lysate (Cat# [LY431150]) using anti-DDK antibody (Cat# [TA50011-100]). Left: Cell lysates from untransfected HEK293T cells; Right: Cell lysates from HEK293T cells transfected with RC228122 using transfection reagent MegaTran 2.0 (Cat# [TT210002]).