

Product datasheet for **RC228107**

RAB2B (NM_001163380) Human Tagged ORF Clone

Product data:

Product Type: Expression Plasmids
Product Name: RAB2B (NM_001163380) Human Tagged ORF Clone
Tag: Myc-DDK
Symbol: RAB2B
Mammalian Cell Selection: Neomycin
Vector: pCMV6-Entry (PS100001)
E. coli Selection: Kanamycin (25 ug/mL)
ORF Nucleotide Sequence: >RC228107 representing NM_001163380
 Red=Cloning site Blue=ORF Green=Tags(s)

TTTTGTAATACGACTCACTATAGGGCGGCCGGAATTCGTCGACTGGATCCGGTACCGAGGAGATCTGCC
 GCC**CGATCGCC**

ATGGTCAACATTGATGGAAAACAACTCAAACCTGCAAATCTGGGATACGGCTGGGCAAGAATCCTCCGTT
 CTATCACCCGTTCTACTACAGGGGAGCAGCTGGAGCACTGCTGGTGTACGACATTACAAGGCGTGAAAC
 CTTCAACCACCTGACCTCATGGTTAGAGGATGCCCGCAGCACTAGTTC AACATGGTTATCATGCTC
 ATTGGGAATAAGAGTGACCTAGAGTCCCGCAGGGATGTGAAGAGAGAAGAAGGAGAGGCCCTTTGCTAGGG
 AGCATGGACTTATATTCATGGAACCTCAGCCAAAACAGCCTGCAATGTTGAAGAGGCCCTTCATTAACAC
 AGCCAAAAGAAATATATAGGAAGATCCAGCAGGTTTATTTGATGTCCACAATGAGGCAAAATGGCATCAAG
 ATTGGGCCCAACAGTCAATTTCAACATCAGTGGACCCAGTGCCTCCCAGCGAACTCTCGTGACATAG
 GGTCCAACCTGGCTGCTGC

ACGCGTACGCGGCCGCTCGAGCAGAACTCATCTCAGAAGAGGATCTGGCAGCAAATGATATCCTGGATT
 ACAAGGATGACGACGATAAGGTTTAA

Protein Sequence: >RC228107 representing NM_001163380
 Red=Cloning site Green=Tags(s)

MVNIDGKQIKLQIWDTAGQESFRSITRSYYRGAAGALLVYDITRRETFNHLTSWLEDARQHSSSNMVMIML
 IGNKSDLESRRDVKREEGEAFAREHGLIFMETSAKTACNVEEAFINTAKEIYRKIQQLFDVHNEANGIK
 IGPOQSIISTSVGPSASQRNSRDIGSNSGCC

TRTRPLEQKLISEEDLAANDILDYKDDDDKV

Chromatograms: https://cdn.origene.com/chromatograms/ja1454_e02.zip

Restriction Sites: SgfI-MluI



[View online »](#)

Cloning Scheme:


ACCN: NM_001163380

ORF Size: 510 bp

OTI Disclaimer: The molecular sequence of this clone aligns with the gene accession number as a point of reference only. However, individual transcript sequences of the same gene can differ through naturally occurring variations (e.g. polymorphisms), each with its own valid existence. This clone is substantially in agreement with the reference, but a complete review of all prevailing variants is recommended prior to use. [More info](#)

OTI Annotation: This clone was engineered to express the complete ORF with an expression tag. Expression varies depending on the nature of the gene.

Components: The ORF clone is ion-exchange column purified and shipped in a 2D barcoded Matrix tube containing 10ug of transfection-ready, dried plasmid DNA (reconstitute with 100 ul of water).

Reconstitution Method:

1. Centrifuge at 5,000xg for 5min.
2. Carefully open the tube and add 100ul of sterile water to dissolve the DNA.
3. Close the tube and incubate for 10 minutes at room temperature.
4. Briefly vortex the tube and then do a quick spin (less than 5000xg) to concentrate the liquid at the bottom.
5. Store the suspended plasmid at -20°C. The DNA is stable for at least one year from date of shipping when stored at -20°C.

RefSeq: [NM_001163380.2](#)

RefSeq ORF: 513 bp

Locus ID: 84932

UniProt ID: [Q8WUD1](#)

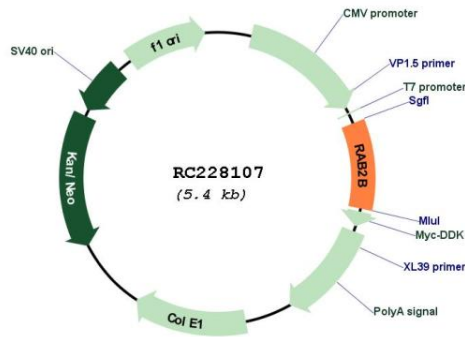
Cytogenetics: 14q11.2

Protein Families: Druggable Genome

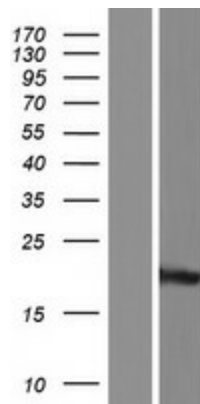
MW: 18.8 kDa

Gene Summary: Members of the Rab protein family are nontransforming monomeric GTP-binding proteins of the Ras superfamily that contain 4 highly conserved regions involved in GTP binding and hydrolysis. Rab proteins are prenylated, membrane-bound proteins involved in vesicular fusion and trafficking; see MIM 179508.[supplied by OMIM, Apr 2006]

Product images:



Circular map for RC228107



Western blot validation of overexpression lysate (Cat# [LY431135]) using anti-DDK antibody (Cat# [TA50011-100]). Left: Cell lysates from untransfected HEK293T cells; Right: Cell lysates from HEK293T cells transfected with RC228107 using transfection reagent MegaTran 2.0 (Cat# [TT210002]).