

Product datasheet for **RC228100**

RDM1 (NM_001163120) Human Tagged ORF Clone

Product data:

Product Type: Expression Plasmids
Product Name: RDM1 (NM_001163120) Human Tagged ORF Clone
Tag: Myc-DDK
Symbol: RDM1
Synonyms: RAD52B
Vector: pCMV6-Entry (PS100001)
E. coli Selection: Kanamycin (25 ug/mL)
Cell Selection: Neomycin
ORF Nucleotide Sequence: >RC228100 representing NM_001163120
 Red=Cloning site Blue=ORF Green=Tags(s)

TTTTGTAATACGACTCACTATAGGGCGGCCGGAATTCGTCGACTGGATCCGGTACCGAGGAGATCTGCC
 GCC**CGATCGCC**

ATGGCGGAGTTGGTACCTTTTGGCGTCCCATCGAGAGTGACAAAACCTTGCTAGTGTGGGAGCTGAGCT
 CCGGACCCACGGCCGAGGCTTTGCATCATTCTCTGTTCACAGCATTTTCTCAGTTTGGCCTTCTGTATTC
 AGTCCGGGTCTTCCAAATGCTGCAGTGGCCATCCTGGTTTCTATGCCGTCATTAAGTTTTATTCTGCA
 AGGGCTGCCACAGAGCCAAAAGGCATGCGACCGGAAGCAGCTTTTTCAGAAATCTCCAGTCAAGGTTT
 GTCTTGGCACCAGACATAAGGCAGTTCAACATCAAGCCCTTGCCCTGAACAGTTCCAAATGCCAAGAAGT
 GGCGAATTACTACTTTGGTTTCAATGGGTGTTCCAAAAGGATCATCAAGGTCCTTGCTCTCCCTGGGAA
 CAGTATGGCCAAGAGGAGGAAGGGTATCTCTCGGATTTTCAGCTTGGAGGAGGAAGAGTTCAGGCTGCCAG
 AACTTGAC

ACGCGTACGCGGCGCTCGAGCAGAAACTCATCTCAGAAGAGGATCTGGCAGCAAATGATATCCTGGATT
 ACAAGGATGACGACGATAAGGTTTAA

Protein Sequence: >RC228100 representing NM_001163120
 Red=Cloning site Green=Tags(s)

MAELVPFAVPIESDKTLLVWELSSGPTAEALHSLFTAFSQFLLYSVRVFPNAAVAHPGFYAVIKFYSA
 RAAHRAQKACDRKQLFQKSPVKVRLGTRHKAVQHQALALNSSKQCQELANYYFGFNGCSKRIKVPSPWK
 QYGQEEEGYLSDFSLEEEEFRLPELD

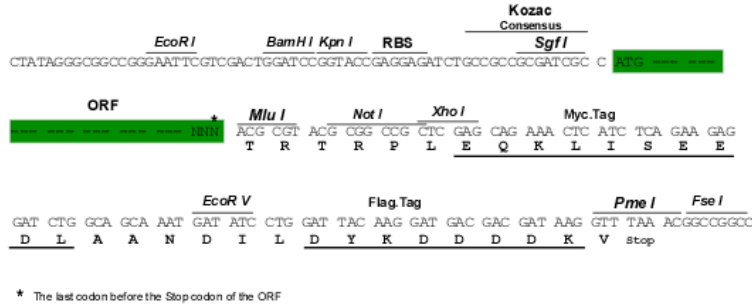
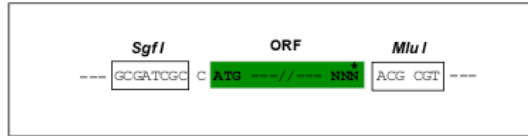
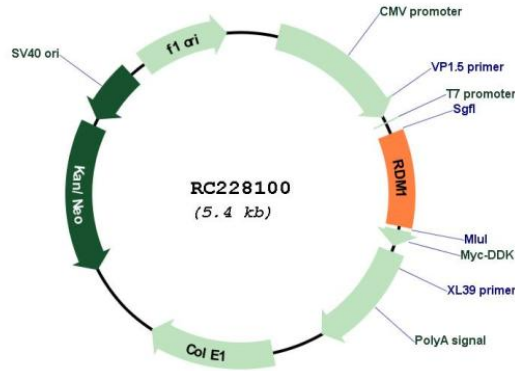
TRTRPLEQKLISEEDLAANDILDYKDDDDKV

Restriction Sites: SgfI-MluI



Cloning Scheme:

Cloning sites used for ORF Shuttling:


Plasmid Map:


ACCN: NM_001163120

ORF Size: 498 bp

OTI Disclaimer: The molecular sequence of this clone aligns with the gene accession number as a point of reference only. However, individual transcript sequences of the same gene can differ through naturally occurring variations (e.g. polymorphisms), each with its own valid existence. This clone is substantially in agreement with the reference, but a complete review of all prevailing variants is recommended prior to use. [More info](#)

OTI Annotation: This clone was engineered to express the complete ORF with an expression tag. Expression varies depending on the nature of the gene.

Components:	The ORF clone is ion-exchange column purified and shipped in a 2D barcoded Matrix tube containing 10ug of transfection-ready, dried plasmid DNA (reconstitute with 100 ul of water).
Reconstitution Method:	<ol style="list-style-type: none">1. Centrifuge at 5,000xg for 5min.2. Carefully open the tube and add 100ul of sterile water to dissolve the DNA.3. Close the tube and incubate for 10 minutes at room temperature.4. Briefly vortex the tube and then do a quick spin (less than 5000xg) to concentrate the liquid at the bottom.5. Store the suspended plasmid at -20°C. The DNA is stable for at least one year from date of shipping when stored at -20°C.
RefSeq:	NM_001163120.2
RefSeq ORF:	501 bp
Locus ID:	201299
UniProt ID:	Q8NG50
Cytogenetics:	17q12
MW:	18.6 kDa
Gene Summary:	This gene encodes a protein involved in the cellular response to cisplatin, a drug commonly used in chemotherapy. The protein encoded by this gene contains two motifs: a motif found in RAD52, a protein that functions in DNA double-strand breaks and homologous recombination, and an RNA recognition motif (RRM) that is not found in RAD52. The RAD52 motif region in RAD52 is important for protein function and may be involved in DNA binding or oligomerization. Alternatively spliced transcript variants encoding different isoforms have been reported. [provided by RefSeq, Jul 2008]