

Product datasheet for RC228097

PPIAL4D (NM_001164261) Human Tagged ORF Clone

Product data:

Product Type: Expression Plasmids
Product Name: PPIAL4D (NM_001164261) Human Tagged ORF Clone
Tag: Myc-DDK
Symbol: PPIAL4D
Mammalian Cell Selection: Neomycin
Vector: pCMV6-Entry (PS100001)
E. coli Selection: Kanamycin (25 ug/mL)
ORF Nucleotide Sequence: >RC228097 representing NM_001164261
 Red=Cloning site Blue=ORF Green=Tags(s)

TTTTGTAATACGACTCACTATAGGGCGGCCGGAATTCGTCGACTGGATCCGGTACCGAGGAGATCTGCC
 GCC**CGATCGCC**

ATGGTCAACTCCGTCGTCTTTTTGAAATCACCAGGGATGGCAAGCCCTTGGCCGCATCTCCATCAAAC
 TGTTTGCAGACAAGATCCAAAGACAGCAGAAAACCTTCGTGCTCTGAGCACTGGAGAGAAAGGATTTCCG
 TTATAAGGGTTCTCGCTTTCACAGAATTATCCAGGGTTATGTGTCAGGGTGGTGAATTCACACGCCCT
 AATGGCACCGGTGACAAGTCCATCTATGGGGAGAAATTTGATGATGAGAACCTCATCCGAAAGCATAACG
 GTTCTGGCATCTTGCCATGGCAATGCTGGACCAACACAAATGGTCCAGTTTTTCATCTGCGCTGC
 CAAGACTGAGTGGTTGGATGGCAAGCATGTGGCGTTTGGCAAGGTGAAAGAACGTGTGAATATTGTGGAA
 GCCACGGAGCACTTTGGGTACAGGAATAGCAAGACCAGCAAGAAGATCACCATTGCTGACTGTGGACAAT
 TC

ACGCGTACGCGGCCGCTCGAGCAGAACTCATCTCAGAAGAGGATCTGGCAGCAAATGATATCCTGGATT
 ACAAGGATGACGACGATAAGGTTTAA

Protein Sequence: >RC228097 representing NM_001164261
 Red=Cloning site Green=Tags(s)

MVNSVVFEEITRDGKPLGRISIKLFADKIPKTAENFRALSTGEKGFYKGFHRIIPGFMCQGGDFTRP
 NGTGDKSIYGEKFDENLIRKHTGSGILSMANAGPNTNGSQFFICAAKTEWLDGKHVAFGKVKERNIVE
 ATEHFGYRNSKTSKKITIAIDCGQF

TRTRPLEQKLISEEDLAANDILDYKDDDDKV

Chromatograms: https://cdn.origene.com/chromatograms/mk8038_a05.zip

Restriction Sites: Sgfl-Mlul



[View online »](#)

Cloning Scheme:


ACCN: NM_001164261

ORF Size: 492 bp

OTI Disclaimer: The molecular sequence of this clone aligns with the gene accession number as a point of reference only. However, individual transcript sequences of the same gene can differ through naturally occurring variations (e.g. polymorphisms), each with its own valid existence. This clone is substantially in agreement with the reference, but a complete review of all prevailing variants is recommended prior to use. [More info](#)

OTI Annotation: This clone was engineered to express the complete ORF with an expression tag. Expression varies depending on the nature of the gene.

Components: The ORF clone is ion-exchange column purified and shipped in a 2D barcoded Matrix tube containing 10ug of transfection-ready, dried plasmid DNA (reconstitute with 100 ul of water).

- Reconstitution Method:**
1. Centrifuge at 5,000xg for 5min.
 2. Carefully open the tube and add 100ul of sterile water to dissolve the DNA.
 3. Close the tube and incubate for 10 minutes at room temperature.
 4. Briefly vortex the tube and then do a quick spin (less than 5000xg) to concentrate the liquid at the bottom.
 5. Store the suspended plasmid at -20°C. The DNA is stable for at least one year from date of shipping when stored at -20°C.

RefSeq: [NM_001164261.1](#), [NP_001157733.1](#)

RefSeq ORF: 495 bp

Locus ID: 645142

UniProt ID: [F5H284](#)

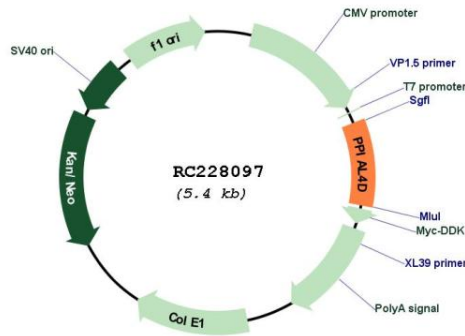
Cytogenetics: 1q21.1

MW: 18 kDa

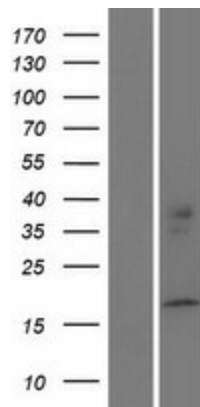
Gene Summary:

PPIases accelerate the folding of proteins. It catalyzes the cis-trans isomerization of proline imidic peptide bonds in oligopeptides (By similarity).[UniProtKB/Swiss-Prot Function]

Product images:



Circular map for RC228097



Western blot validation of overexpression lysate (Cat# [LY431125]) using anti-DDK antibody (Cat# [TA50011-100]). Left: Cell lysates from untransfected HEK293T cells; Right: Cell lysates from HEK293T cells transfected with RC228097 using transfection reagent MegaTran 2.0 (Cat# [TT210002]).