

Product datasheet for RC228095

LOC100128542 (NM_001162367) Human Tagged ORF Clone

Product data:

Product Type:	Expression Plasmids
Product Name:	LOC100128542 (NM_001162367) Human Tagged ORF Clone
Tag:	Myc-DDK
Symbol:	LOC100128542
Mammalian Cell Selection:	Neomycin
Vector:	pCMV6-Entry (PS100001)
E. coli Selection:	Kanamycin (25 ug/mL)
ORF Nucleotide Sequence:	>RC228095 representing NM_001162367 Red=Cloning site Blue=ORF Green=Tags(s)

TTTTGTAATACGACTCACTATAGGGCGGCCGGAATTCGTCGACTGGATCCGGTACCGAGGAGATCTGCC
GCC**CGATCGCC**

ATGAAGCATGCAGGCCTGGGTGAAGGAATACCTCCTGACAACTCCGGAATGATGGCTATGCTAATAATG
GGTATAGTGCCCGTGAAGAAGAAAATGAGACACTACTGAAAATCTGAGAAGCAAAGTAAGTCTATAAA
ATCTTTTCCATTGAAATAGGCCATGAAGTTAAAACCCAAAATAAATTATTAGCTGTAATGGATTCACAA
TTTGATTCTACAACTGGATTTCTAGGCTTCTTTACAAGCCTCTATGTAAGCACAGGCTGGTGAGGGCCC
CAGGAAGAGCAGCACCGCCCTCGGCACAGGCCCTACTCCAAGTCTGTGCAGGAGCAGGCTTTCAGCCAG
CGCAGCAGCTCTGCACCTCTGTGGCACCGCTCTGCCAAGAGGGAAGGTGCAGGCCCTGCAGCCCATCGCC
TTGGATCTGAAGACCAGCCCTGTGGGGCTGCTAAGTCATGAAACTGGCCTCATGGAGATTCA

ACGCGTACGCGGCCGCTCGAGCAGAAACTCATCTCAGAAGAGGATCTGGCAGCAAATGATATCCTGGATT
ACAAGGATGACGACGATAAGGTTTAA

Protein Sequence:	>RC228095 representing NM_001162367 Red=Cloning site Green=Tags(s)
-------------------	---

MKHAGLGEGIPPDNSGNDGYANNNGYSAREEENETLTENLRSKVTAIKSFSIEIGHEVKTQNKLLAVMDSQ
FDSTTGFLGFFTSLYVKHRLVRAPGRAAPPSAQAPTPSPVQEQVLPAAAHLHLCGTALPRGKVQALQPIA
LDLKTSPVGLLSHETGLMEIS

TRTRPLEQKLISEEDLAANDILDYKDDDDKV

Chromatograms:	https://cdn.origene.com/chromatograms/mk8037_c12.zip
----------------	---

Restriction Sites:	SgfI-MluI
--------------------	-----------



[View online >](#)

Cloning Scheme:


ACCN: NM_001162367

ORF Size: 483 bp

OTI Disclaimer: The molecular sequence of this clone aligns with the gene accession number as a point of reference only. However, individual transcript sequences of the same gene can differ through naturally occurring variations (e.g. polymorphisms), each with its own valid existence. This clone is substantially in agreement with the reference, but a complete review of all prevailing variants is recommended prior to use. [More info](#)

OTI Annotation: This clone was engineered to express the complete ORF with an expression tag. Expression varies depending on the nature of the gene.

Components: The ORF clone is ion-exchange column purified and shipped in a 2D barcoded Matrix tube containing 10ug of transfection-ready, dried plasmid DNA (reconstitute with 100 ul of water).

- Reconstitution Method:**
1. Centrifuge at 5,000xg for 5min.
 2. Carefully open the tube and add 100ul of sterile water to dissolve the DNA.
 3. Close the tube and incubate for 10 minutes at room temperature.
 4. Briefly vortex the tube and then do a quick spin (less than 5000xg) to concentrate the liquid at the bottom.
 5. Store the suspended plasmid at -20°C. The DNA is stable for at least one year from date of shipping when stored at -20°C.

RefSeq: [NM_001162367.1](#), [NP_001155839.1](#)

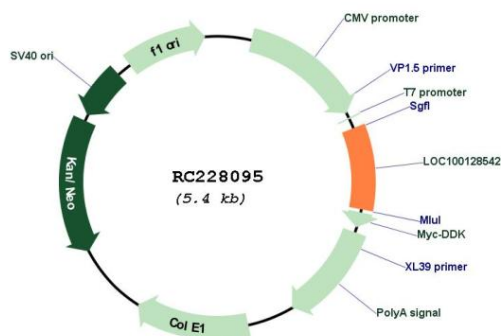
RefSeq ORF: 485 bp

Locus ID: 100128542

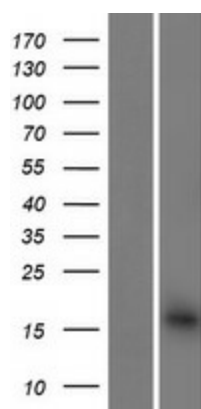
Cytogenetics: 7q36.1

MW: 16.9 kDa

Product images:



Circular map for RC228095



Western blot validation of overexpression lysate (Cat# [LY431123]) using anti-DDK antibody (Cat# [TA50011-100]). Left: Cell lysates from untransfected HEK293T cells; Right: Cell lysates from HEK293T cells transfected with RC228095 using transfection reagent MegaTran 2.0 (Cat# [TT210002]).