

Product datasheet for **RC228094**

SHISAL2B (NM_001164442) Human Tagged ORF Clone

Product data:

Product Type: Expression Plasmids
Product Name: SHISAL2B (NM_001164442) Human Tagged ORF Clone
Tag: Myc-DDK
Symbol: SHISAL2B
Synonyms: FAM159B
Mammalian Cell Selection: Neomycin
Vector: pCMV6-Entry (PS100001)
E. coli Selection: Kanamycin (25 ug/mL)
ORF Nucleotide Sequence: >RC228094 representing NM_001164442
Red=Cloning site Blue=ORF Green=Tags(s)

TTTTGTAATACGACTCACTATAGGGCGGCCGGAATTCGTCGACTGGATCCGGTACCGAGGAGATCTGCC
GCC**CGATCGCC**

ATGAGCGAGGCCAGCCGACTGTGCTCCGGCTACTACAGCCTCAACCAGAGCTTCGTGGAGCCCTCCAGT
GCCCCGCGCGGCGAGGGGCGAGCGCTCCAGTATTGCTGCGGCTTCGCCGACCTCAAGTACTGCTGCAG
CGAGCCGGGCGAGCTACTCCCCTACAAGCACAGCTACATGTGGAGCCTCAGCATTGGTGCCTTGATTGGA
CTAGGAATTGCTGCCCTGTGTTTACTCGCCTTGTGTCATCAGTGTCTGTGCTCCTTTGCTATTTATTCTGT
ATACGAAACCTCAAAGATTAGACTGCGCCTTAAGCTTCAACACTTAGAGGCTTCTCCACTCAAGAAGG
CAAGTCAAATGGAAAACCAAAGCCCTCAATTCAAATGCAGCATCAAATGCAACAAATGAAACATACTAT
GAAGCTGATGATATAATTCAAGAAAAACAATGGATGCAACACAAATCCACATTGCTTAT

ACGCGTACGCGGCCGCTCGAGCAGAACTCATCTCAGAAGAGGATCTGGCAGCAAATGATATCCTGGATT
ACAAGGATGACGACGATAAGGTTTAA

Protein Sequence: >RC228094 representing NM_001164442
Red=Cloning site Green=Tags(s)

MSEASRLCSGYISLNQSFVEPFQCPRRGEGAAALQYCCGFADLKYCCSEPGSYFPYKHSYMWSLSIGALIG
LGIAALVLLAFVISVCLCYLFLYTKPQRLDTGLKLQHLLEASSTQEGKSNGKTKALNSNAASNATNETYY
EADDIIQEKTMDATQIHIAY

TRTRPLEQK**L**ISEEDLAANDILDYKDDDDKV

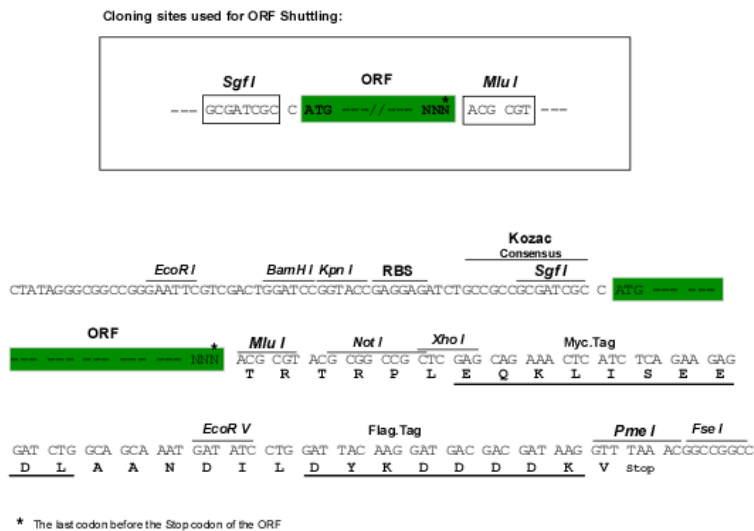
Chromatograms: https://cdn.origene.com/chromatograms/mk8038_d03.zip



[View online >](#)

Restriction Sites: SgfI-MluI

Cloning Scheme:



ACCN: NM_001164442

ORF Size: 480 bp

OTI Disclaimer: Due to the inherent nature of this plasmid, standard methods to replicate additional amounts of DNA in E. coli are highly likely to result in mutations and/or rearrangements. Therefore, OriGene does not guarantee the capability to replicate this plasmid DNA. Additional amounts of DNA can be purchased from OriGene with batch-specific, full-sequence verification at a reduced cost. Please contact our customer care team at custsupport@origene.com or by calling 301.340.3188 option 3 for pricing and delivery.

The molecular sequence of this clone aligns with the gene accession number as a point of reference only. However, individual transcript sequences of the same gene can differ through naturally occurring variations (e.g. polymorphisms), each with its own valid existence. This clone is substantially in agreement with the reference, but a complete review of all prevailing variants is recommended prior to use. [More info](#)

OTI Annotation: This clone was engineered to express the complete ORF with an expression tag. Expression varies depending on the nature of the gene.

Components: The ORF clone is ion-exchange column purified and shipped in a 2D barcoded Matrix tube containing 10ug of transfection-ready, dried plasmid DNA (reconstitute with 100 ul of water).

Reconstitution Method:

1. Centrifuge at 5,000xg for 5min.
2. Carefully open the tube and add 100ul of sterile water to dissolve the DNA.
3. Close the tube and incubate for 10 minutes at room temperature.
4. Briefly vortex the tube and then do a quick spin (less than 5000xg) to concentrate the liquid at the bottom.
5. Store the suspended plasmid at -20°C. The DNA is stable for at least one year from date of shipping when stored at -20°C.

Note: Plasmids are not sterile. For experiments where strict sterility is required, filtration with 0.22um filter is required.

RefSeq: [NM_001164442.2](#)

RefSeq ORF: 483 bp

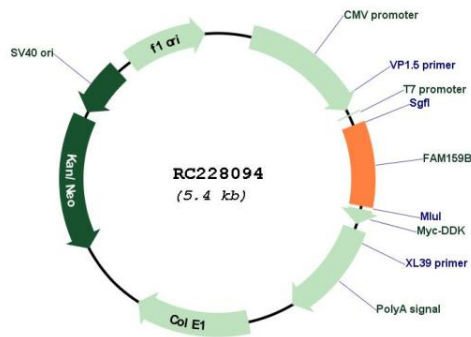
Locus ID: 100132916

UniProt ID: [A6NKW6](#)

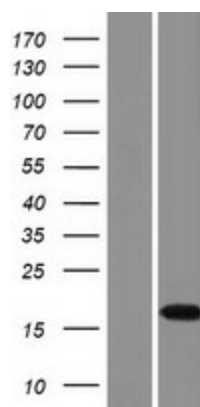
Cytogenetics: 5q12.3

MW: 17.5 kDa

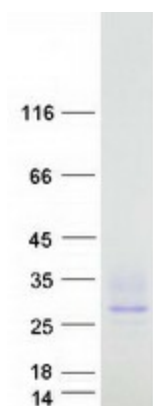
Product images:



Circular map for RC228094



Western blot validation of overexpression lysate (Cat# [LY431122]) using anti-DDK antibody (Cat# [TA50011-100]). Left: Cell lysates from untransfected HEK293T cells; Right: Cell lysates from HEK293T cells transfected with RC228094 using transfection reagent MegaTran 2.0 (Cat# [TT210002]).



Coomassie blue staining of purified SHISAL2B protein (Cat# [TP328094]). The protein was produced from HEK293T cells transfected with SHISAL2B cDNA clone (Cat# RC228094) using MegaTran 2.0 (Cat# [TT210002]).