

Product datasheet for RC228082

REEP1 (NM_001164732) Human Tagged ORF Clone

Product data:

Product Type: Expression Plasmids
Product Name: REEP1 (NM_001164732) Human Tagged ORF Clone
Tag: Myc-DDK
Symbol: REEP1
Synonyms: C2orf23; HMN5B; SPG31; Yip2a
Mammalian Cell Selection: Neomycin
Vector: pCMV6-Entry (PS100001)
E. coli Selection: Kanamycin (25 ug/mL)
ORF Nucleotide Sequence: >RC228082 representing NM_001164732
 Red=Cloning site Blue=ORF Green=Tags(s)

TTTTGTAATACGACTCACTATAGGGCGGCCGGAATTCGTCGACTGGATCCGGTACCGAGGAGATCTGCC
 GCC**CGATCGCC**

ATGGTGTGATGGATCATCTCCAGGCTGGTGGTGTATATTTGGCACCCTTTACCCTGCGTATTATTCCT
 ACAAGGCTGTGAAATCAAAGGACATTAAGGAATATGTCAAATGGATGATGTACTGGATTATTTGCACT
 TTTCACACAGCAGAGACATTACAGACATCTTCCTTTGTTGGGACAGGGTGCCTATCGGAGAGACTGC
 GGAGCTTCAGCATGCAGGACCTCACCACCATCAGGGGAGACGGCGCCCTGCTCCCTCGGCCCCCACC
 ACCGGGTCTGGCGGGCCAGCGCAAACACGGCCAGCCTAAGATGTCCAGGAGTGCTTCTGAGAGCGCT
 AGCAGCTCAGGACCGCCTAGAATCCTTCGATCTCGCTTCAGGAAGAAAAGTACCTCATCTCGGCCACC
 GAAACCACG

ACGCGTACGCGGCCGCTCGAGCAGAACTCATCTCAGAAGAGGATCTGGCAGCAAATGATATCCTGGATT
 ACAAGGATGACGACGATAAGGTTTAA

Protein Sequence: >RC228082 representing NM_001164732
 Red=Cloning site Green=Tags(s)

MVSWIIISRLVVLIFGTLYPAYYSYKAVKSKDIKEYVKWMMYWIIFALFTTAETFTDIFLCWDRVPYRRDC
 GASACRTSPPSGETAPLLPRAPHHRGLGGAANTASLRCPGVLLRALAAQAPPRILRSFRKSTSSSAT
 ETT

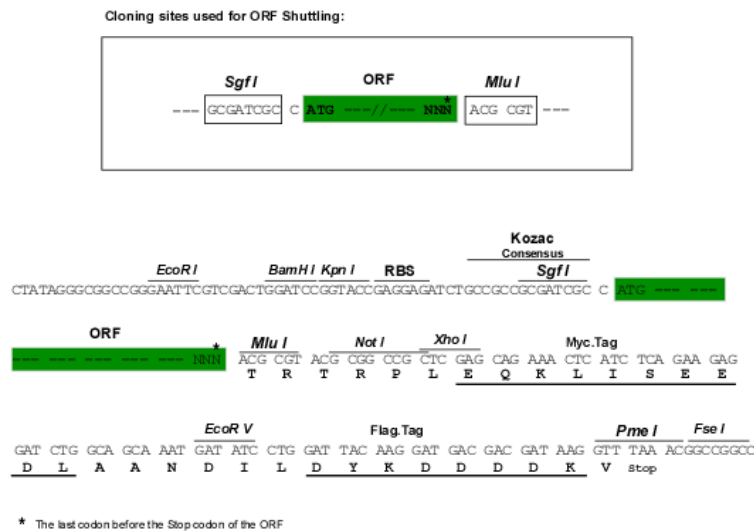
TRTRPLEQKLISEEDLAANDILDYKDDDDKV

Chromatograms: https://cdn.origene.com/chromatograms/ja1447_a10.zip


[View online »](#)

Restriction Sites: SgfI-MluI

Cloning Scheme:



ACCN: NM_001164732

ORF Size: 429 bp

OTI Disclaimer: The molecular sequence of this clone aligns with the gene accession number as a point of reference only. However, individual transcript sequences of the same gene can differ through naturally occurring variations (e.g. polymorphisms), each with its own valid existence. This clone is substantially in agreement with the reference, but a complete review of all prevailing variants is recommended prior to use. [More info](#)

OTI Annotation: This clone was engineered to express the complete ORF with an expression tag. Expression varies depending on the nature of the gene.

Components: The ORF clone is ion-exchange column purified and shipped in a 2D barcoded Matrix tube containing 10ug of transfection-ready, dried plasmid DNA (reconstitute with 100 ul of water).

Reconstitution Method:

1. Centrifuge at 5,000xg for 5min.
2. Carefully open the tube and add 100ul of sterile water to dissolve the DNA.
3. Close the tube and incubate for 10 minutes at room temperature.
4. Briefly vortex the tube and then do a quick spin (less than 5000xg) to concentrate the liquid at the bottom.
5. Store the suspended plasmid at -20°C. The DNA is stable for at least one year from date of shipping when stored at -20°C.

RefSeq: [NM_001164732.2](#)

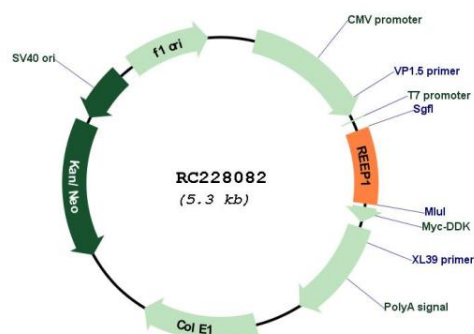
RefSeq ORF: 432 bp

Locus ID: 65055

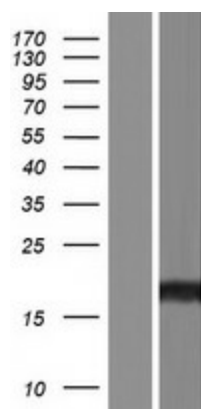
UniProt ID: [Q9H902](#)

| | |
|--------------------------|--|
| Cytogenetics: | 2p11.2 |
| Protein Families: | Druggable Genome, Transmembrane |
| MW: | 15.9 kDa |
| Gene Summary: | This gene encodes a mitochondrial protein that functions to enhance the cell surface expression of odorant receptors. Mutations in this gene cause spastic paraplegia autosomal dominant type 31, a neurodegenerative disorder. Alternative splicing results in multiple transcript variants. [provided by RefSeq, Sep 2009] |

Product images:



Circular map for RC228082



Western blot validation of overexpression lysate (Cat# [LY431110]) using anti-DDK antibody (Cat# [TA50011-100]). Left: Cell lysates from untransfected HEK293T cells; Right: Cell lysates from HEK293T cells transfected with RC228082 using transfection reagent MegaTran 2.0 (Cat# [TT210002]).